

WAAS CH 93928 W30A	APP CRS 301°	Rwy Idg TDZE Apt Elev	3760 25 25
--	------------------------	-----------------------------	---------------------------------------

RNAV (GPS) RWY 30

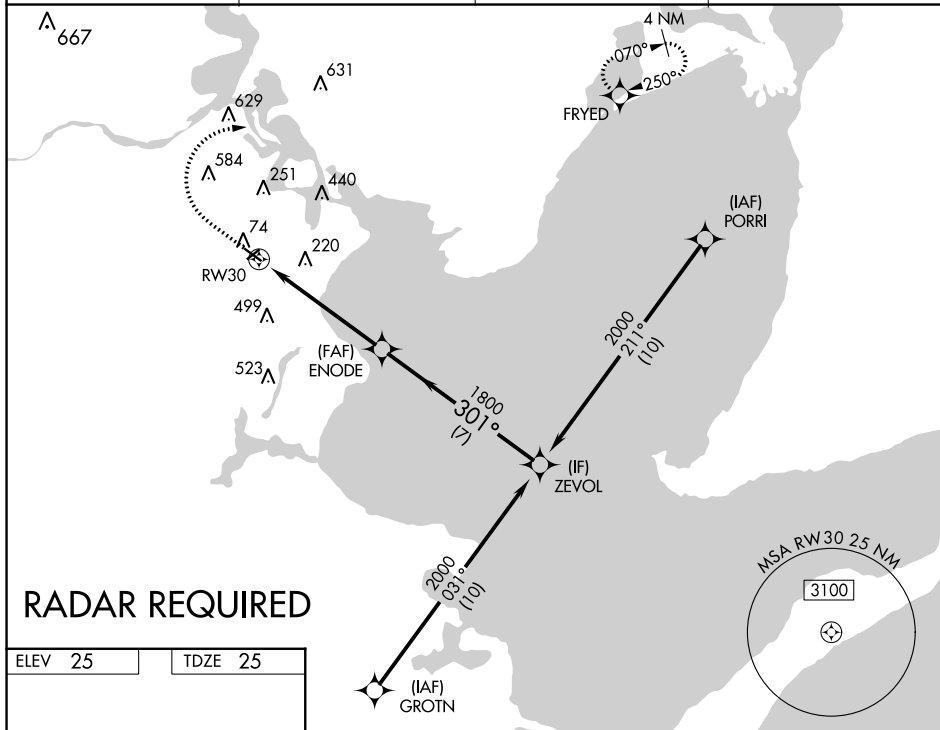
LA PORTE MUNI (T41)

RNP APCH.

Baro-VNAV NA. Use Ellington altimeter setting. Rwy 30 helicopter visibility reduction below $\frac{3}{4}$ SM NA. Circling Rwy 5, 23 NA at night.

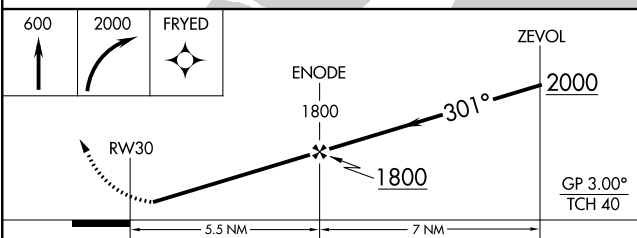
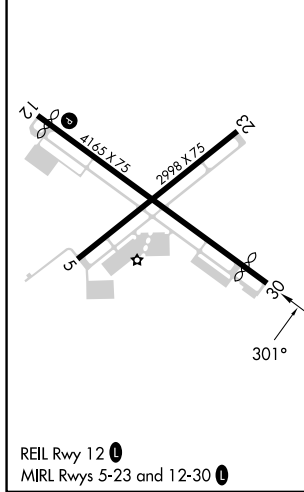
MISSED APPROACH: Climb to 600 then climbing right turn to 2000 direct FRYED and hold.

AWOS-3PT 120.275	HOUSTON APP CON 134.45 284.0	CLNC DEL 125.6	UNICOM 122.7 (CTAF)
----------------------------	--	--------------------------	-------------------------------



RADAR REQUIRED

ELEV 25	TDZE 25
---------	---------



	A	B	C	D
LPV DA	291-1 266 (300-1)			NA
LNAV/VNAV DA	454-1 $\frac{1}{4}$ 429 (500-1 $\frac{1}{4}$)			NA
LNAV MDA	520-1	495 (500-1)	520-1 $\frac{3}{8}$ 495 (500-1 $\frac{3}{8}$)	NA
CIRCLING	600-1 575 (600-1)	620-1 595 (600-1)	880-2 $\frac{1}{2}$ 855 (900-2 $\frac{1}{2}$)	NA

SC-5, 31 OCT 2024 to 28 NOV 2024

SC-5, 31 OCT 2024 to 28 NOV 2024