

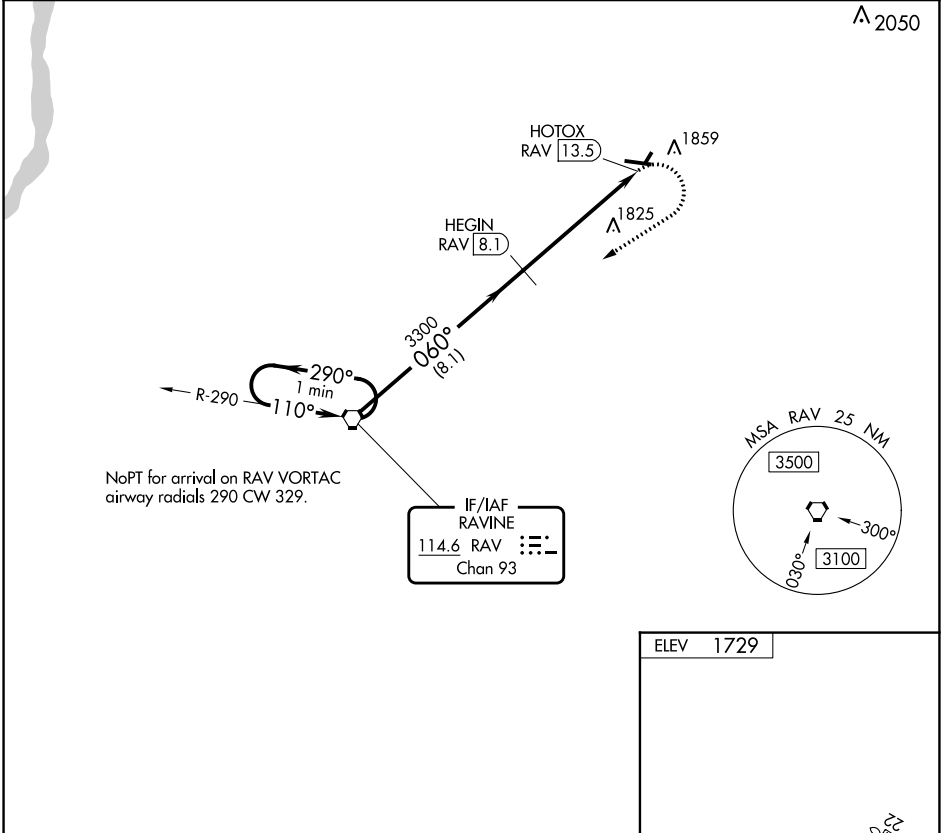
VORTAC RAV <b>114.6</b> Chan <b>93</b>	APP CRS <b>060°</b>	Rwy Idg TDZE Apt Elev <b>N/A</b> <b>N/A</b> <b>1729</b>
--	------------------------	--

**VOR-A**  
SCHUYLKILL COUNTY/JOE ZERBEY (Z:R)

**NA** Circling to Rwy 4, 22 NA at night. DME required.  
When local altimeter setting not received, use Penn Valley altimeter setting and increase all MDAs 280 feet and visibility Cat C and D ¾ SM.

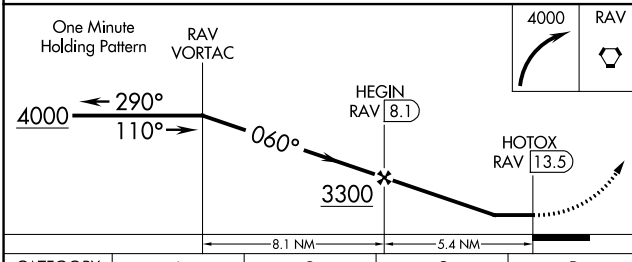
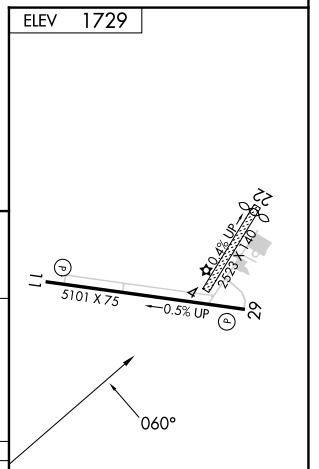
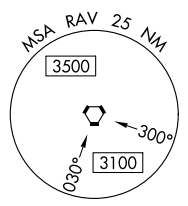
MISSED APPROACH: Climbing right turn to 4000 direct RAV VORTAC and hold.

AWOS-3 <b>127.575</b>	HARRISBURG APP CON <b>118.25 269.45</b>	UNICOM <b>123.075</b> (CTAF) <b>0</b>
--------------------------	--	--



NoPT for arrival on RAV VORTAC  
airway radials 290 CW 329.

IF/IAF  
RAVINE  
114.6 RAV  
Chan 93



CATEGORY	A	B	C	D	MIRL Rwy 11-29 <b>0</b> REIL Rws 11 and 29 <b>0</b>
<b>C</b> CIRCLING	2160-1 431 (500-1)	2180-1 451 (500-1)	2240-1½ 511 (600-1½)	2280-2 551 (600-2)	

NE-4, 31 OCT 2024 to 28 NOV 2024

NE-4, 31 OCT 2024 to 28 NOV 2024