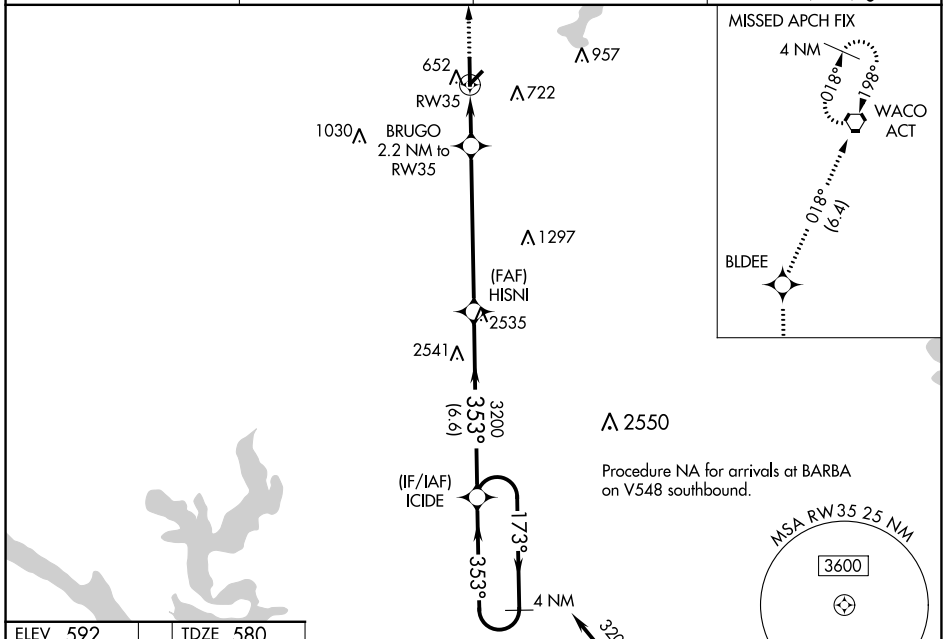


WAAS CH 87130 W35A	APP CRS 353°	Rwy Idg TDZE Apt Elev	5501 580 592
--	------------------------	-----------------------------	---

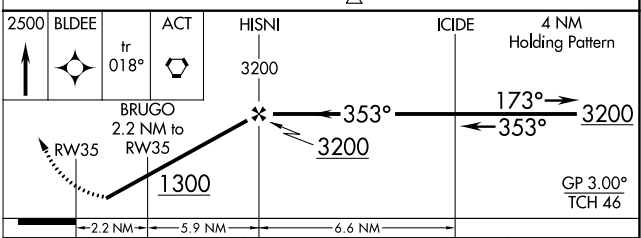
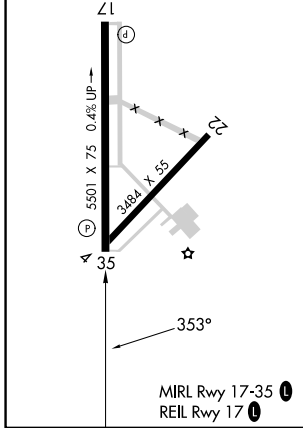
RNAV (GPS) RWY 35

MC GREGOR EXEC (PWG)

RNP APCH - GPS		UNICOM 123.05 (CTAF) 0	
<p>ASR Baro-VNAV NA when using Waco Rgnl altimeter setting. For uncompensated Baro-VNAV systems, LNAV/VNAV NA below -16°C or above 54°C. When local altimeter setting not received, use Waco Rgnl altimeter setting and increase LPV DA to 861 feet; increase LNAV/VNAV DA to 861 feet; increase all MDAs 40 feet and LNAV visibility Cat B 1/4 SM, and Circling visibility Cat B/C 1/4 SM. Rwy 35 helicopter visibility reduction below 3/4 SM NA.</p>		<p>MISSED APPROACH: Climb to 2500 direct BLDEE and on track 018° to ACT VORTAC and hold.</p>	
AWOS-3PT 135.525	WACO APP CON * 127.65 352.0	GCO 121.725	



ELEV 592	TDZE 580
-----------------	-----------------



CATEGORY	A	B	C	D
LPV DA	830-3/4	250 (300-3/4)		NA
LNAV/VNAV DA	830-3/4	250 (300-3/4)		NA
LNAV MDA	960-1	380 (400-1)	960-1 1/8 380 (400-1 1/8)	NA
CIRCLING	1020-1 428 (500-1)	1060-1 468 (500-1)	1300-2 708 (800-2)	NA