

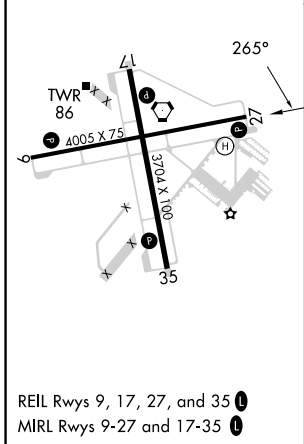
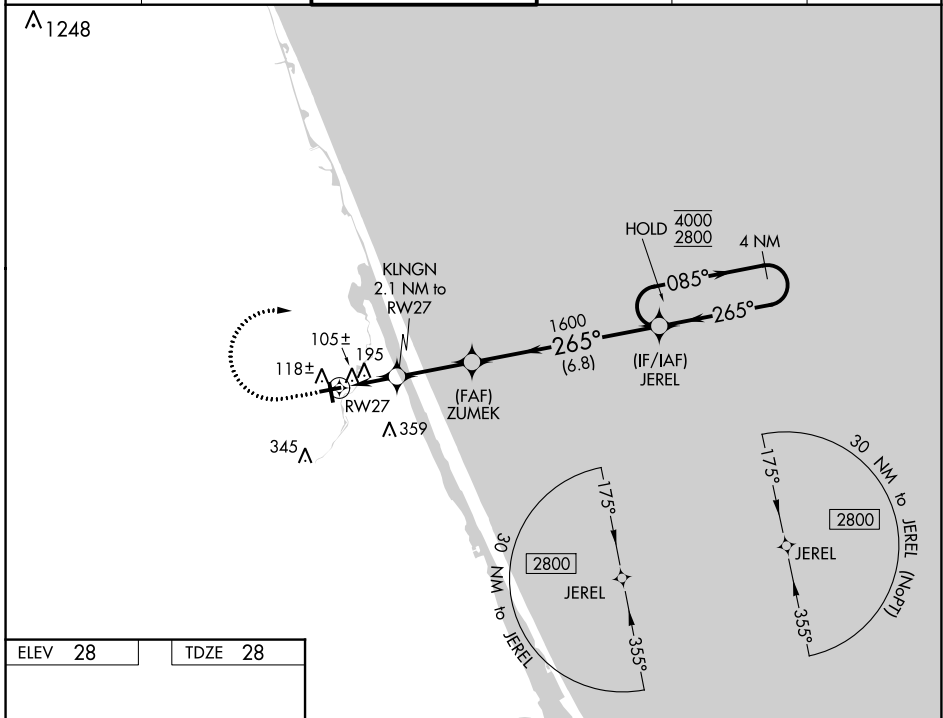
WAAS CH <b>77634</b> <b>W27A</b>	APP CRS <b>265°</b>	Rwy Idg TDZE Apt Elev	<b>4005</b> <b>28</b> <b>28</b>
--	------------------------	-----------------------------	---------------------------------------

# RNAV (GPS) RWY 27

ORMOND BEACH MUNI (OMN)

RNP APCH.		MISSED APPROACH: Climb to 600 then climbing right turn to 2800 direct JEREL and hold.			
Rwy 27 helicopter visibility reduction below 3/4 SM NA.					

ATIS <b>118.475</b>	DAYTONA APP CON <b>125.8 269.075</b>	ORMOND BEACH TOWER* <b>119.075 (CTAF)</b>	GND CON <b>121.625</b>	CLNC DEL <b>121.625</b>	UNICOM <b>123.05</b>
------------------------	---	--	---------------------------	----------------------------	-------------------------



600	2800	JEREL	Visual Segment - Obstacles.	
			4 NM Holding Pattern	
RWY 27 0.8 NM to RWY 27 KLNIGN 2.1 NM to RWY 27 ZUMEK 1600 720 265° 085° → 4000 ← 265° 2800			JEREL 4 NM Holding Pattern	
0.8 1.3 NM 2.7 NM 6.8 NM				
CATEGORY	A	B	C	D
LP MDA	360-1 332 (400-1)			NA
LNAV MDA	460-1	432 (500-1)	460-1¼ 432 (500-1¼)	NA
CIRCLING	500-1	472 (500-1)	740-2 712 (800-2)	NA

SE-3, 31 OCT 2024 to 28 NOV 2024

SE-3, 31 OCT 2024 to 28 NOV 2024