

HOUSTON, TEXAS

AL-5461 (FAA)

24305

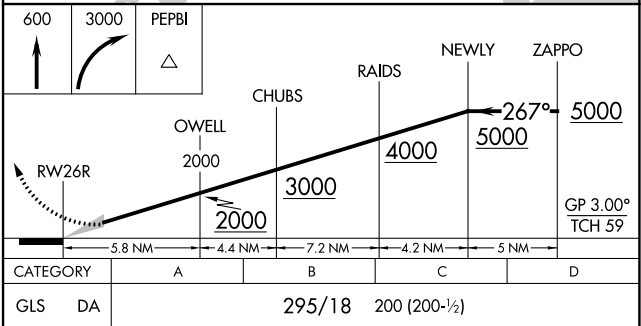
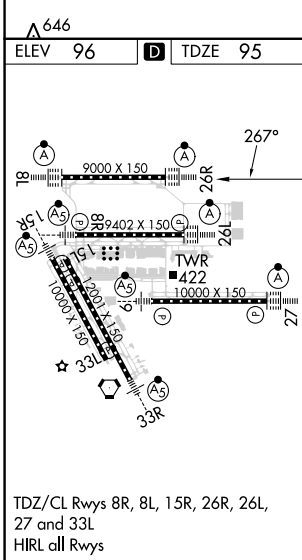
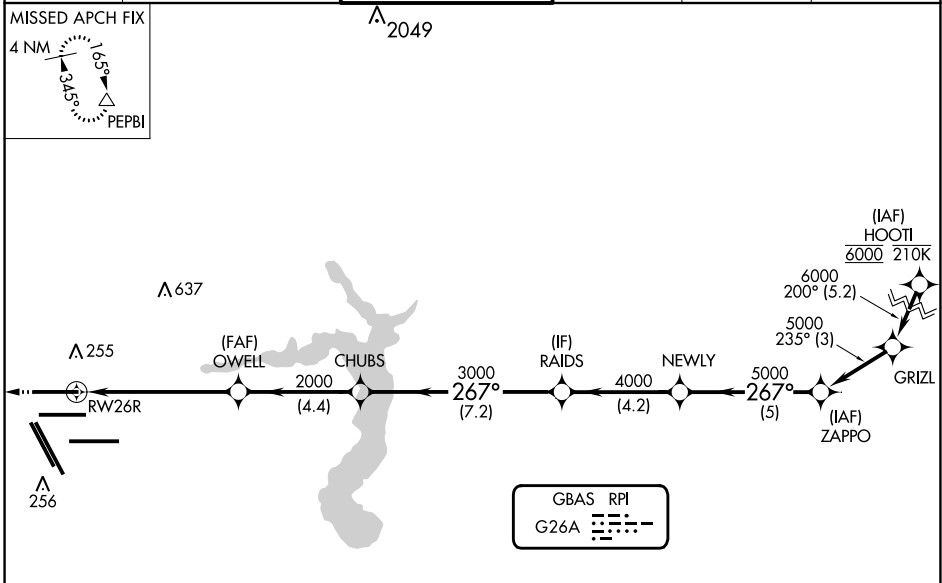
GBAS CH <b>2148A</b> <b>G26A</b>	APP CRS <b>267°</b>	Rwy Idg TDZE Apt Elev	<b>9000</b> <b>95</b> <b>96</b>
--	------------------------	-----------------------------	---------------------------------------

# GLS RWY 26R

GEORGE BUSH INTCNL/HOUSTON (IAH)

RNP APCH - GPS.		ALSIF-2	MISSED APPROACH: Climb to 600 then climbing right turn to 3000 direct PEPBI and hold.		

D-ATIS <b>124.05</b>	HOUSTON APP CON <b>120.05 379.1</b> EAST <b>124.35 316.15</b> WEST	HOUSTON TOWER <b>120.725 290.2</b>	GND CON <b>118.575</b>	CLNC DEL <b>128.1</b>	CPDLC
-------------------------	--	---------------------------------------	---------------------------	--------------------------	-------



HOUSTON, TEXAS  
Amdt 2A 20APR23

29°59'N-95°20'W

GEORGE BUSH INTCNL/HOUSTON (IAH)  
**GLS RWY 26R**

SC-5, 31 OCT 2024 to 28 NOV 2024

SC-5, 31 OCT 2024 to 28 NOV 2024