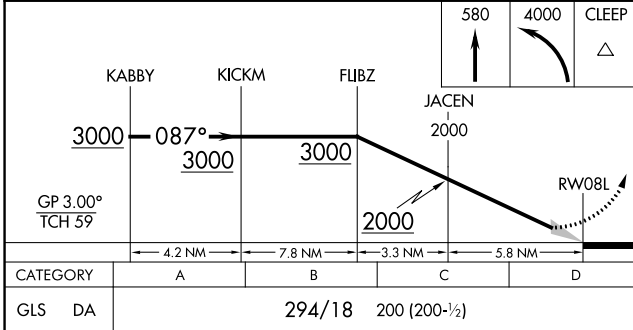
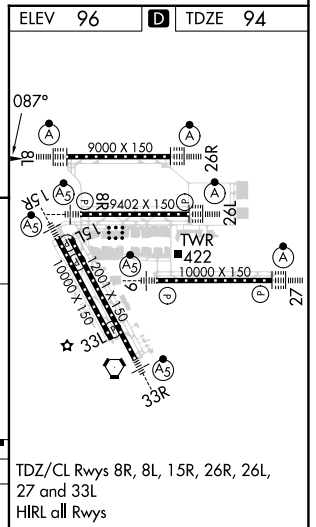
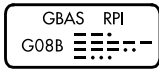
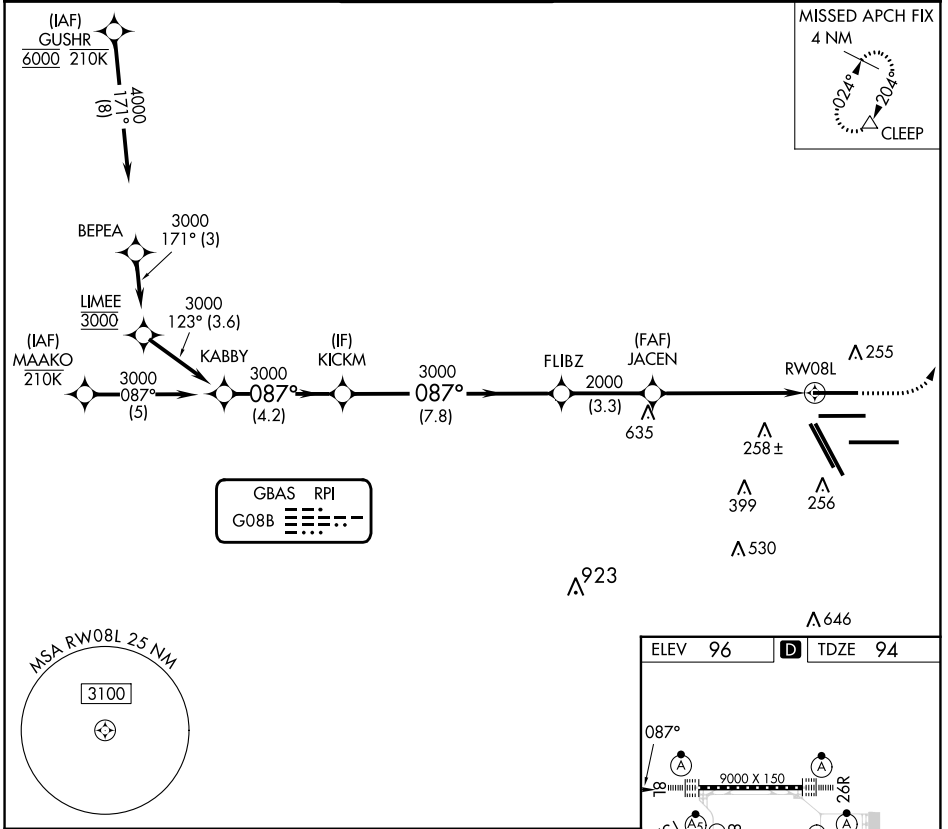


GBAS CH <b>21073</b> <b>G08B</b>	APP CRS <b>087°</b>	Rwy Idg TDZE Apt Elev	<b>9000</b> <b>94</b> <b>96</b>
--	------------------------	-----------------------------	---------------------------------------

# GLS RWY 8L

GEORGE BUSH INTCNL/HOUSTON (IAH)

RNP APCH - GPS.		ALSIF-2		MISSED APPROACH: Climb to 580 then climbing left turn to 4000 direct CLEEP and hold.	
▼ Use of FD or AP required during simultaneous operations. Autopilot coupled		ⓐ			
▲ NA approach NA below 294. Simultaneous approach authorized.					
D-ATIS <b>124.05</b>	HOUSTON APP CON <b>120.05 379.1</b> EAST <b>124.35 316.15</b> WEST	HOUSTON TOWER <b>120.725 290.2</b>	GND CON <b>118.575</b>	CLNC DEL <b>128.1</b>	CPDLC



SC-5, 31 OCT 2024 to 28 NOV 2024

SC-5, 31 OCT 2024 to 28 NOV 2024