

LOC/DME I-BZU <b>111.55</b> Chan <b>52</b> (Y)	APP CRS <b>087°</b>	Rwy Idg TDZE Apt Elev	<b>9000</b> <b>94</b> <b>96</b>
--	------------------------	-----------------------------	---------------------------------------

# ILS or LOC RWY 8L

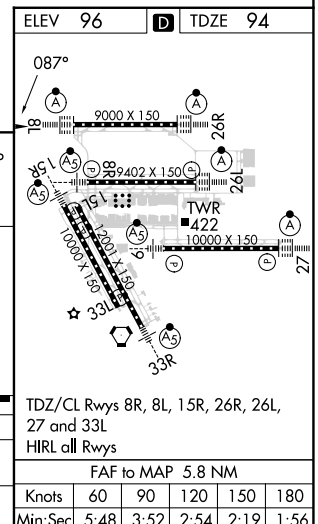
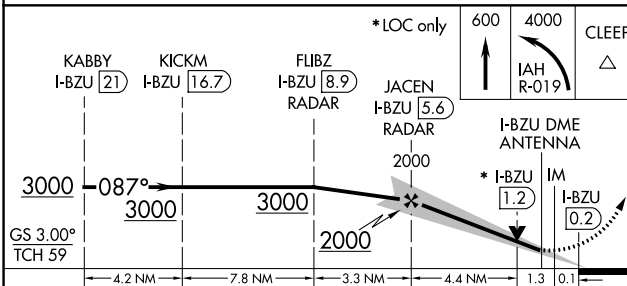
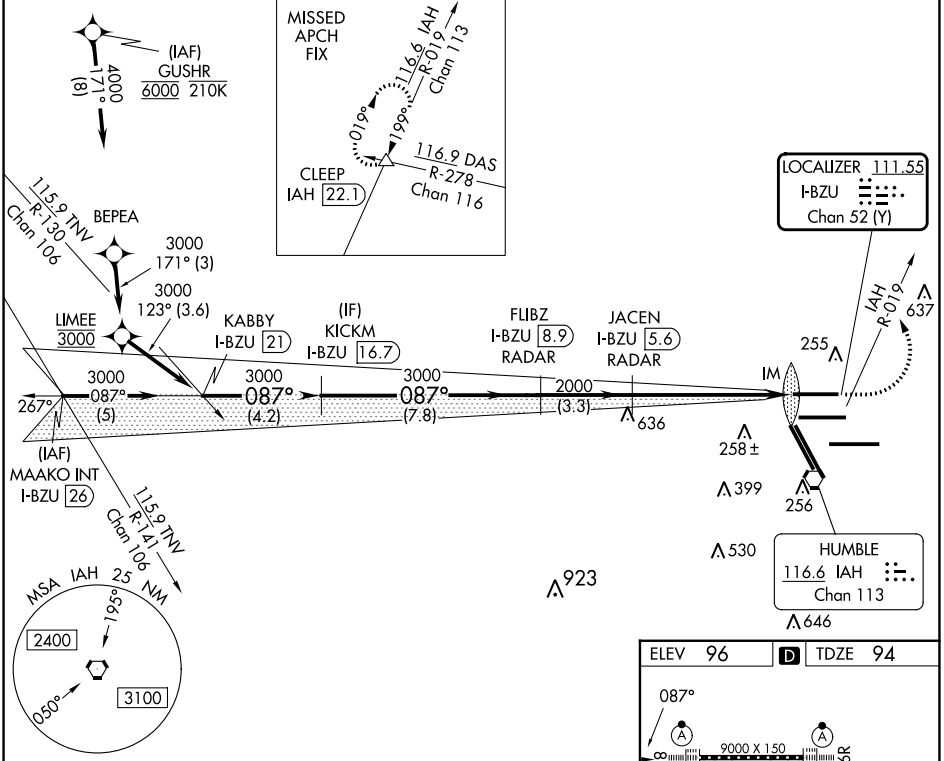
GEORGE BUSH INTCNL/HOUSTON (IAH)

DME required. From GUSHR. RNAV 1-GPS required.

Simultaneous approach authorized with Rwy 8R and Rwy 9.

ALSF-2 MISSED APPROACH: Climb to 600 then climbing left turn to 4000 on IAH VORTAC R-019 to CLEEP INT/IAH 22.1 DME and hold.

ATIS <b>124.05</b>	HOUSTON APP CON <b>120.05 379.1</b> EAST <b>124.35 316.15</b> WEST	HOUSTON TOWER <b>120.725 290.2</b>	GND CON <b>118.575</b>	CLNC DEL <b>128.1</b>	CPDLC
-----------------------	--	---------------------------------------	---------------------------	--------------------------	-------



CATEGORY	A	B	C	D	E
S-ILS 8L	294/18		200 (200-½)		
S-LOC 8L	600/24	506 (600-½)	600/55	506 (600-1)	
FAF to MAP 5.8 NM					
Knots	60	90	120	150	180
Min:Sec	5:48	3:52	2:54	2:19	1:56

SC-5, 31 OCT 2024 to 28 NOV 2024

SC-5, 31 OCT 2024 to 28 NOV 2024