

HOUSTON, TEXAS

AL-5461 (FAA)

24305

WAAS CH <b>57902</b> <b>W33A</b>	APP CRS <b>329°</b>	Rwy 33R Rwy ldg <b>12001</b> TDZE <b>89</b> Apt Elev <b>96</b>	Rwy 33L Rwy ldg <b>10000</b> TDZE <b>90</b> Apt Elev <b>96</b>
--	------------------------	---	---

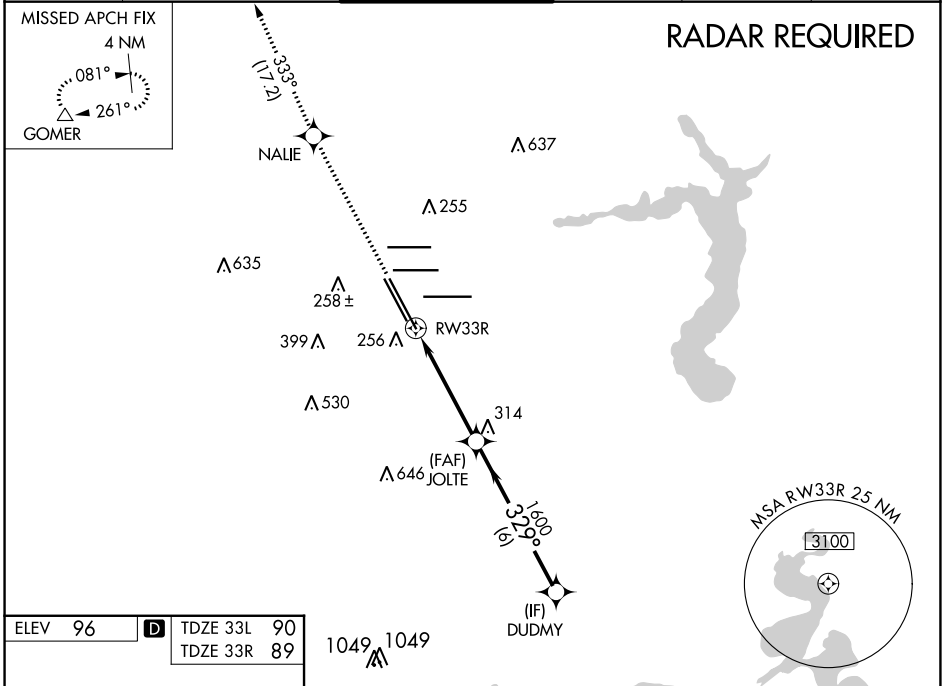
# RNAV (GPS) RWY 33R

GEORGE BUSH INTCNL/HOUSTON (IAH)

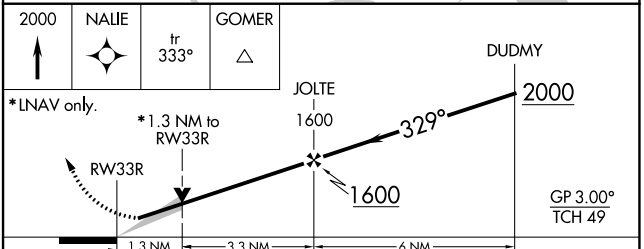
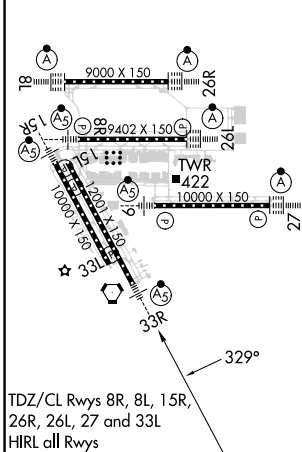
▼ For uncompensated Baro-VNAV systems, LNAV/VNAV NA below -3°C (27°F) or above 54°C (130°F). For inop MALSR, increase LPV Cat E visibility to RVR 4000, LNAV/VNAV Cat E visibility to 1½, and LNAV Cat E visibility to 1½. DME/DME RNP-0.3 NA. \*\*RVR 1800 authorized with use of FD or AP or HUD to DA.

MALSR 	MISSED APPROACH: Climb to 2000 direct NALIE and on track 333° to GOMER and hold.
-----------	--

D-ATIS <b>124.05</b>	HOUSTON APP CON <b>120.05 379.1</b> EAST <b>124.35 316.15</b> WEST	HOUSTON TOWER <b>127.3 288.25</b>	GND CON <b>121.7</b>	CLNC DEL <b>128.1</b>	CPDLC
-------------------------	--	--------------------------------------	-------------------------	--------------------------	-------



ELEV 96	<b>D</b>	TDZE 33L 90
		TDZE 33R 89



CATEGORY	A	B	C	D	E
LPV DA**	289/24		200 (200-½)		
LNAV/VNAV DA	490/45		401 (400-¾)		
LNAV MDA	540/24	451 (500-½)	540/45		451 (500-¾)
SIDESTEP 33L	540-1	450 (500-1)	540-1½	540-2	NA
			450 (500-1½)	450 (500-2)	

HOUSTON, TEXAS  
Amdt 2B 07DEC17

29°59'N-95°20'W

# RNAV (GPS) RWY 33R

SC-5, 31 OCT 2024 to 28 NOV 2024