


APP CRS	Rwy Idg	<b>9000</b>
<b>267°</b>	TDZE	<b>96</b>
	Apt Elev	<b>96</b>

# RNAV (RNP) Y RWY 26R

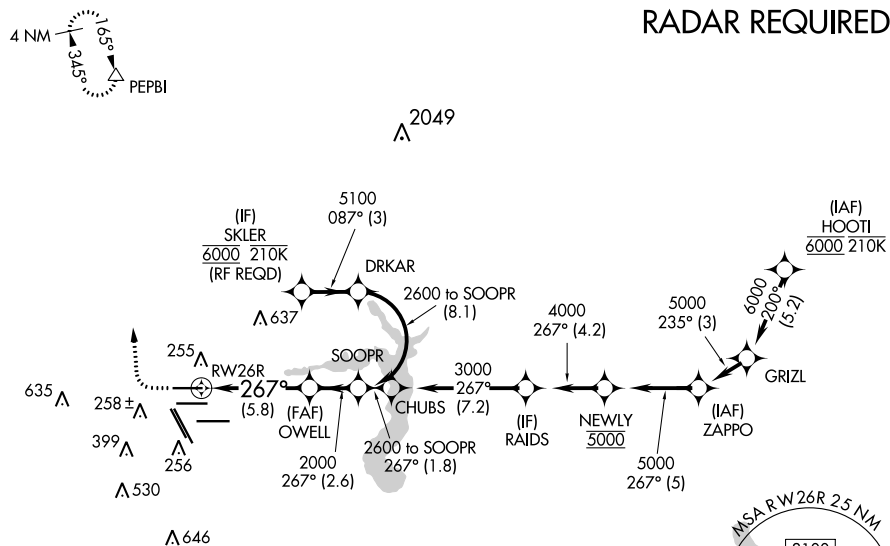
GEORGE BUSH INTCNL/HOUSTON (IAH)

▼ For uncompensated Baro-VNAV systems, procedure NA below -3°C (27°F) or above 54°C (130°F). GPS required. Simultaneous approach authorized. For inop ALS, increase RNP 0.11 all Cats visibility to RVR 5000 and increase RNP 0.15 all Cats visibility to 1½ SM. Use of FD or AP providing RNAV track guidance required during simultaneous operations.

ALSF-2  
 MISSED APPROACH: Climb to 600 then climbing right turn to 3000 direct PEPBI and hold.

D-ATIS <b>124.05</b>	HOUSTON APP CON <b>120.05 379.1 EAST</b> <b>124.35 316.15 WEST</b>	HOUSTON TOWER <b>120.72 290.2</b>	GND CON <b>121.7</b>	CLNC DEL <b>128.1</b>	CPDLC
-------------------------	--------------------------------------------------------------------------	--------------------------------------	-------------------------	--------------------------	-------

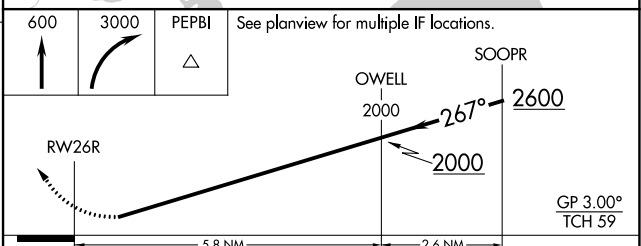
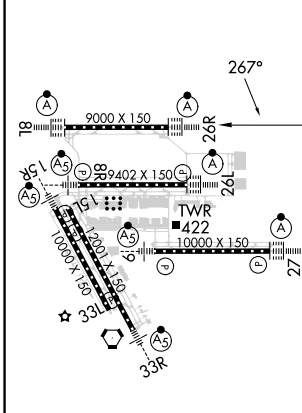
## RADAR REQUIRED



SC-5, 31 OCT 2024 to 28 NOV 2024

SC-5, 31 OCT 2024 to 28 NOV 2024

ELEV 96	<b>D</b>	TDZE 96
---------	----------	---------



CATEGORY	A	B	C	D
RNP 0.11 DA		429/40	333 (400-¾)	
RNP 0.15 DA		496/45	400 (400-¾)	
RNP 0.30 DA		554/50	458 (500-1½)	

TDZ/CL Rwy's 8R, 8L, 15R, 26R, 26L, 27 and 33L  
 HIRL all Rwy's

## AUTHORIZATION REQUIRED