

# TEJAS FIVE ARRIVAL (RNAV) Transition Routes

HOUSTON, TEXAS

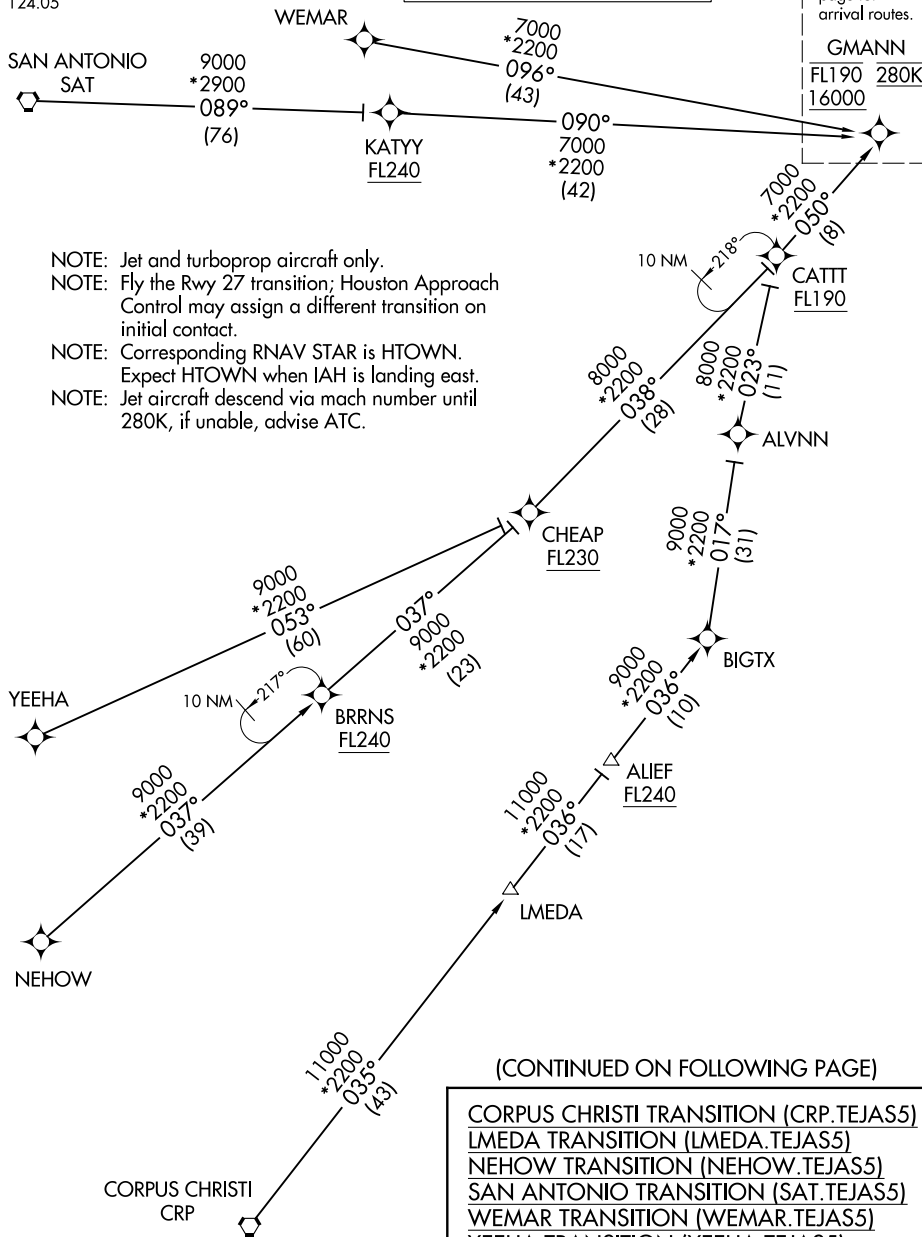
HOUSTON APP CON  
119.175 291.675  
D-ATIS  
124.05

RNAV 1 - DME/DME/IRU or GPS.

RADAR required.

See following page for arrival routes.

GMANN  
FL190 280K  
16000



- NOTE: Jet and turboprop aircraft only.
- NOTE: Fly the Rwy 27 transition; Houston Approach Control may assign a different transition on initial contact.
- NOTE: Corresponding RNAV STAR is HTOWN. Expect HTOWN when IAH is landing east.
- NOTE: Jet aircraft descend via mach number until 280K, if unable, advise ATC.

(CONTINUED ON FOLLOWING PAGE)

- CORPUS CHRISTI TRANSITION (CRP.TEJAS5)
- LMEDA TRANSITION (LMEDA.TEJAS5)
- NEHOW TRANSITION (NEHOW.TEJAS5)
- SAN ANTONIO TRANSITION (SAT.TEJAS5)
- WEMAR TRANSITION (WEMAR.TEJAS5)
- YEEHA TRANSITION (YEEHA.TEJAS5)

NOTE: Chart not to scale.

SC-5, 31 OCT 2024 to 28 NOV 2024

SC-5, 31 OCT 2024 to 28 NOV 2024

# TEJAS FIVE ARRIVAL (RNAV) Transition Routes

HOUSTON, TEXAS