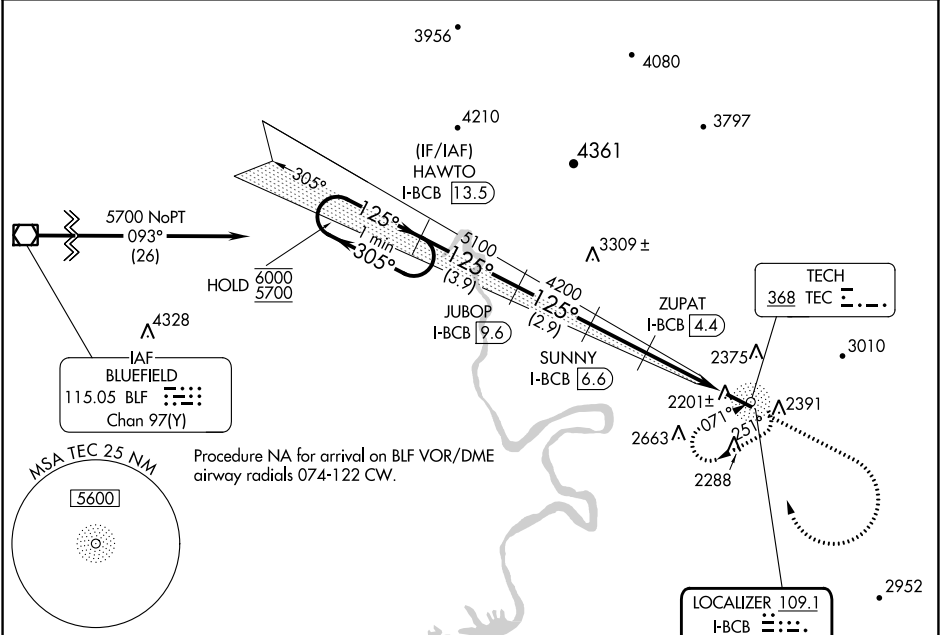


LOC/DME I-BCB 109.1 Chan 28	APP CRS 125°	Rwy Idg TDZE 5501 2119	Apt Elev 2120
---	------------------------	--	-------------------------

LOC RWY 13

VIRGINIA TECH/MONTGOMERY EXEC (BCB)

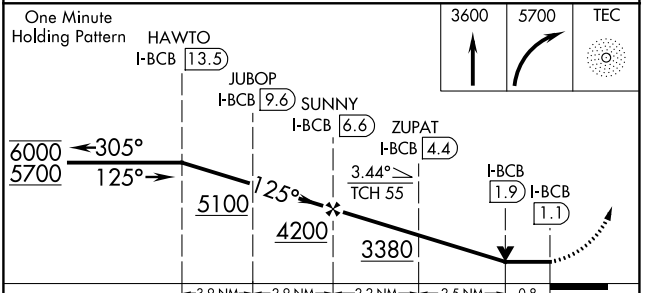
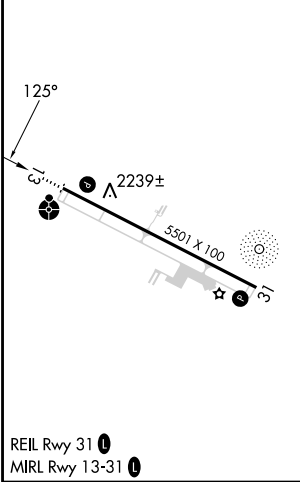
ADF and DME required.		ODALS	MISSED APPROACH: Climb to 3600 then climbing right turn to 5700 direct TEC NDB and hold, continue climb-in-hold to 5700.
Rwy 13 helicopter visibility reduction below 1 SM NA. Inop table does not apply.			
AWOS-3 133.325	ROANOKE APP CON 126.9 339.8	CLNC DEL 124.85	UNICOM 123.05 (CTAF) 0



NE-3, 31 OCT 2024 to 28 NOV 2024

NE-3, 31 OCT 2024 to 28 NOV 2024

ELEV 2120	TDZE 2119
------------------	------------------



CATEGORY	A	B	C	D
S-13	2480-1 361 (400-1)			NA
C CIRCLING	2760-1 640 (700-1)	2820-1 700 (700-1)	2980-2½ 860 (900-2½)	NA