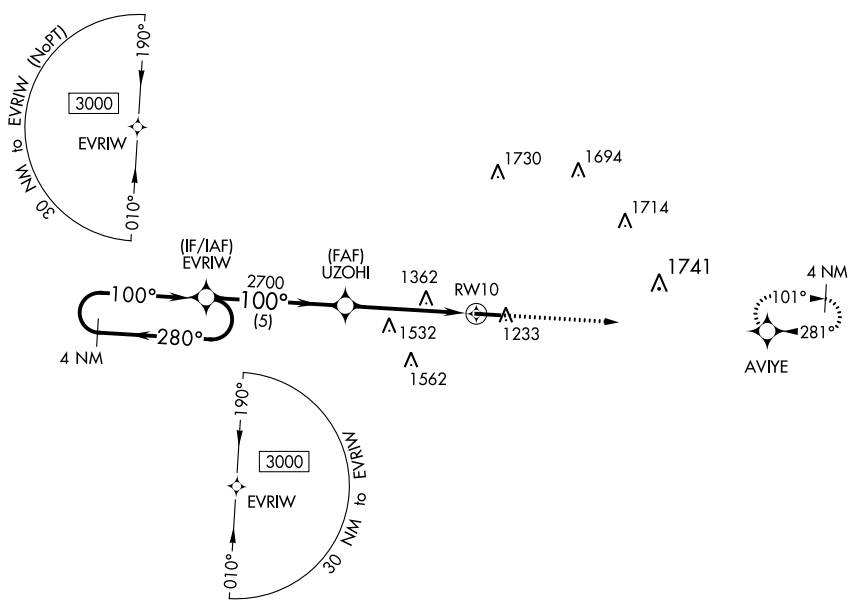


WAAS CH 77534 W10A	APP CRS 100°	Rwy ldg TDZE Apt Elev	5000 1172 1184
--	------------------------	-----------------------------	---

RNAV (GPS) RWY 10

HILLSDALE MUNI (JYM)

<p>▽ For uncompensated Baro-VNAV systems, LNAV/VNAV NA below -17°C (2°F) or above 54°C (130°F). DME/DME RNP-0.3 NA.</p>		<p>MISSED APPROACH: Climb to 3100 direct AVIYE and hold.</p>
AWOS-3 121.025	TOLEDO APP CON 134.35 317.55	UNICOM 122.8 (CTAF) 0



EC-1, 31 OCT 2024 to 28 NOV 2024

EC-1, 31 OCT 2024 to 28 NOV 2024

ELEV 1184 TDZE 1172

REIL Rwy 10 and 28 **0**
HIRL Rwy 10-28 **0**

4 NM Holding Pattern		EVRIW		3100	AVIYE
<p>3000 ← 280° / 100° →</p>		<p>UZOHI 2700</p> <p>*1.6 NM to RWY10</p>		*LNAV only	
GP 3.00° TCH 46		<p>5 NM</p> <p>3.1 NM</p> <p>1.6 NM</p>		<p>RWY10</p>	
CATEGORY	A	B	C	D	
LPV DA	1441-1 269 (300-1)		NA		
LNAV/VNAV DA	1601-1½ 429 (500-1½)		NA		
LNAV MDA	1720-1	548 (600-1)	1720-1⅝ 548 (600-1⅝)	NA	
C CIRCLING	1720-1	536 (600-1)	1720-1⅝ 536 (600-1⅝)	NA	