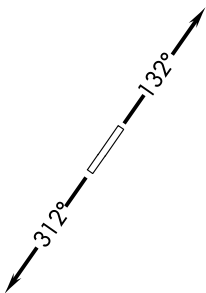


EC-1, 31 OCT 2024 to 28 NOV 2024

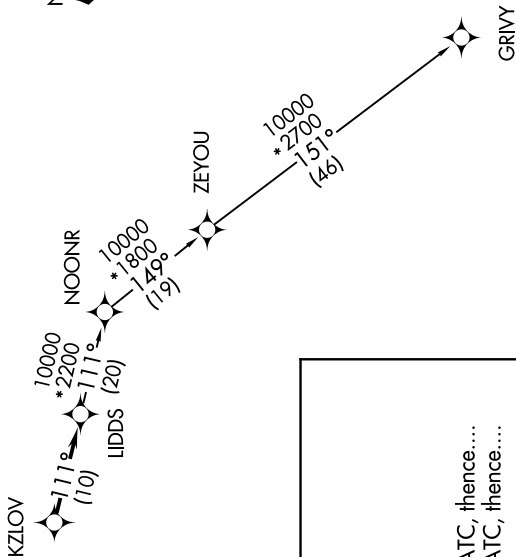
RNAV 1 - DME/DME/IRU or GPS.
RADAR required.

AWOS-3
118.875
CINC DEL
121.725
CTAF
123.0
DETROIT DEP CON
132.35 284.0

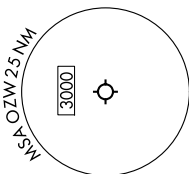
TAKEOFF MINIMUMS:
Rwy 13, 31: Standard.



TOP ALTITUDE:
ASSIGNED BY ATC



NOTE: Turbopjet departures at/above 10000,
maintain 280K until advised by ATC.



NOTE: Chart not to scale.

DEPARTURE ROUTE DESCRIPTION

TAKEOFF RUNWAY 13: Climb on heading 132° or as assigned by ATC, thence....
 TAKEOFF RUNWAY 31: Climb on heading 312° or as assigned by ATC, thence....
for RADAR vectors to KZLOV, then on track 111° to LIDDS, then on (transition).
 Maintain ATC assigned altitude, expect filed altitude 10 minutes after departure.

GRIVY TRANSITION (LIDDS3-GRIVY):

EC-1, 31 OCT 2024 to 28 NOV 2024