

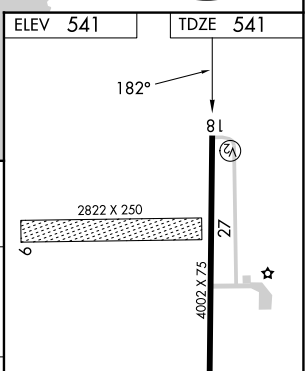
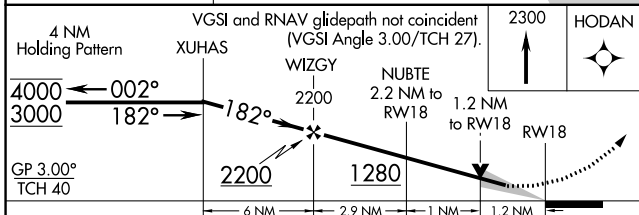
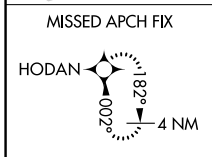
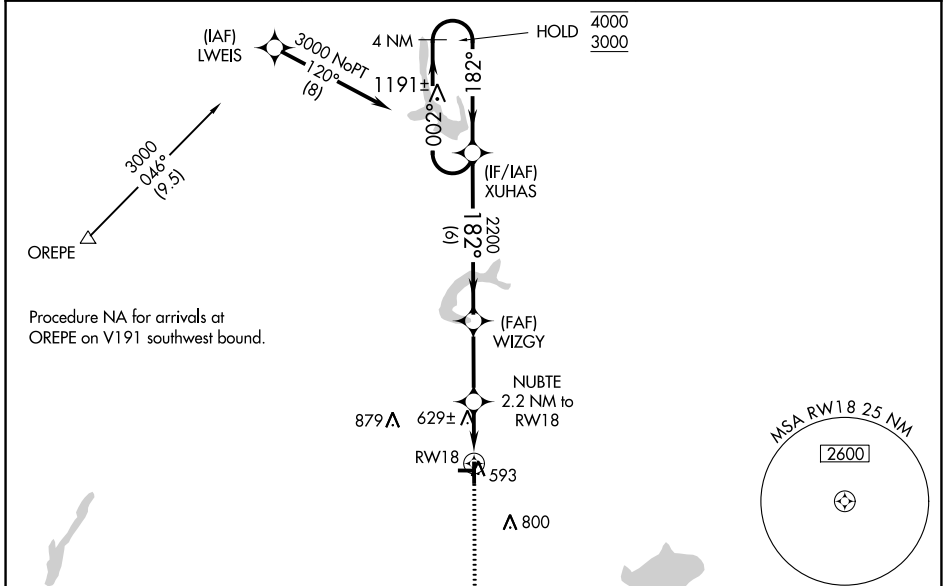
WAAS CH 69638 W18A	APP CRS 182°	Rwy Idg 4002 TDZE 541 Apt Elev 541
--	------------------------	---

RNAV (GPS) RWY 18

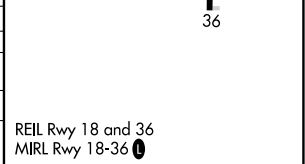
GREENVILLE (G.R.E)

RNP APCH - GPS.	<p>NA Circling NA to Rwys 9 and 27. Baro-VNAV and VDP NA when using Salem altimeter setting. For uncompensated Baro-VNAV systems, LNAV/VNAV NA below -16°C or above 54°C.</p> <p>Procedure NA at night. When local altimeter setting not received, use Salem altimeter setting and increase LPV DA to 905 feet; increase LNAV/VNAV DA to 905 feet; increase all MDAs 60 feet and LNAV visibility Cat C/D ¼ SM, and Circling visibility Cat D ¼ SM.</p>	MISSED APPROACH: Climb to 2300 direct HODAN and hold.
-----------------	---	--

AWOS-AV 123.05	KANSAS CITY CENTER 127.7 351.825	UNICOM 123.05 (CTAF) 0
--------------------------	--	----------------------------------



CATEGORY	A	B	C	D
LPV DA		848-1	307 (400-1)	
LNAV/VNAV DA		848-1	307 (400-1)	
LNAV MDA	940-1 399 (400-1)		940-1 399 (400-1 1/8)	
CIRCLING	980-1 439 (500-1)	1000-1 459 (500-1)	1220-2 679 (700-2)	1240-2 699 (700-2 1/4)



EC-3, 31 OCT 2024 to 28 NOV 2024

EC-3, 31 OCT 2024 to 28 NOV 2024