

APP CRS <b>131°</b>	Rwy Idg <b>3863</b>
	TDZE <b>1178</b>
	Apt Elev <b>1178</b>

# RNAV (GPS) RWY 13

CRYSTAL LAKE (5M5)

RNP APCH - GPS.

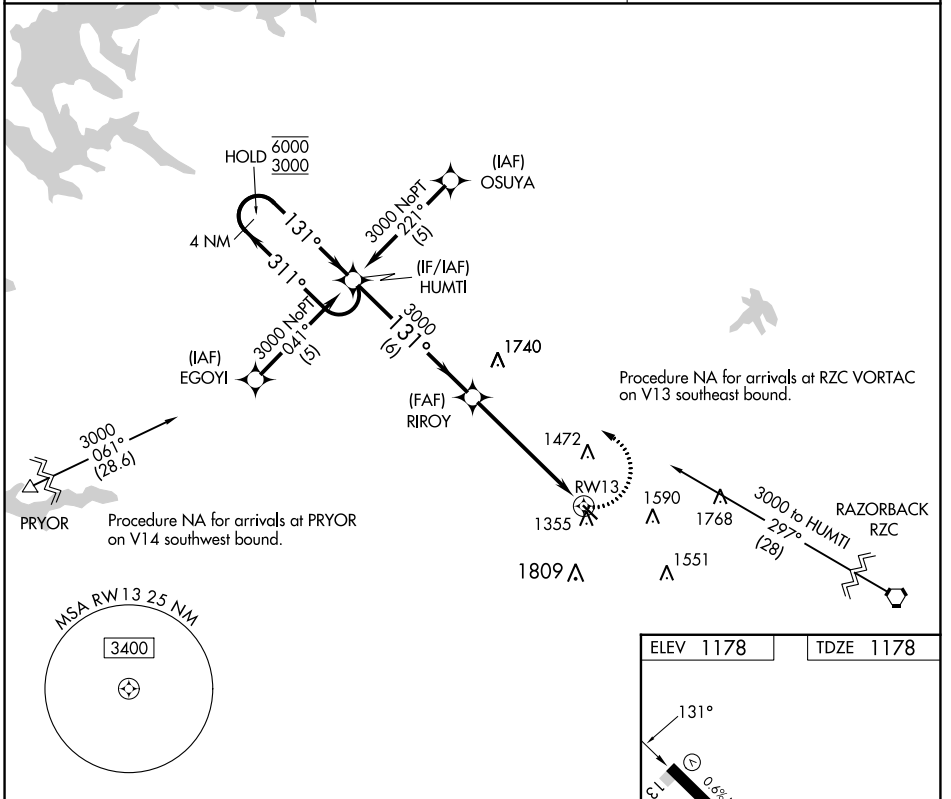
**NA** Procedure NA at night. Rwy 13 helicopter visibility reduction below 1 SM NA. Use Northwest Arkansas Nil altimeter setting; if not received, use Joplin Rgnl altimeter setting and increase all MDAs 120 feet and LNAV Cat C and Circling Cat B visibility ¼ SM and Circling Cat C visibility ½ SM. Circling NA for Cat C southwest of Rwy 13-31.

**MISSED APPROACH:**  
Climbing left turn to 3000 direct HUMTI and hold.

RAZORBACK APP CON \*  
**121.0 244.575**

CLNC DEL  
**126.6**

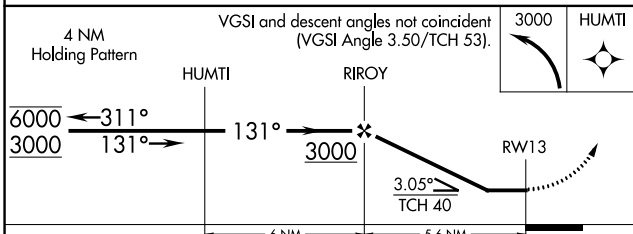
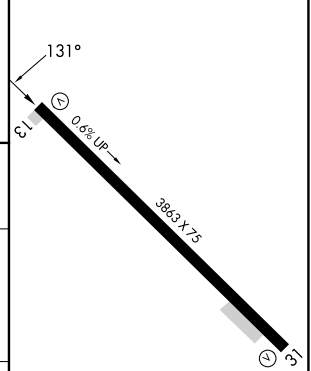
UNICOM  
**122.8 (CTAF)**



SC-1, 31 OCT 2024 to 28 NOV 2024

SC-1, 31 OCT 2024 to 28 NOV 2024

ELEV 1178	TDZE 1178
-----------	-----------



CATEGORY	A	B	C	D
LNAV MDA	1720-1	542 (600-1)	1720-1½ 542 (600-1½)	NA
<b>C</b> CIRCLING	1820-1 642 (700-1)	1900-1 722 (800-1)	1940-2¼ 762 (800-2¼)	NA

LURL Rwy 13-31