

WAAS CH 45841 W14A	APP CRS 136°	Rwy Idg TDZE 3650 1245	Apt Elev 1245
--	------------------------	--	-------------------------

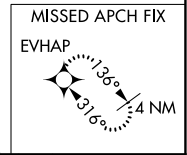
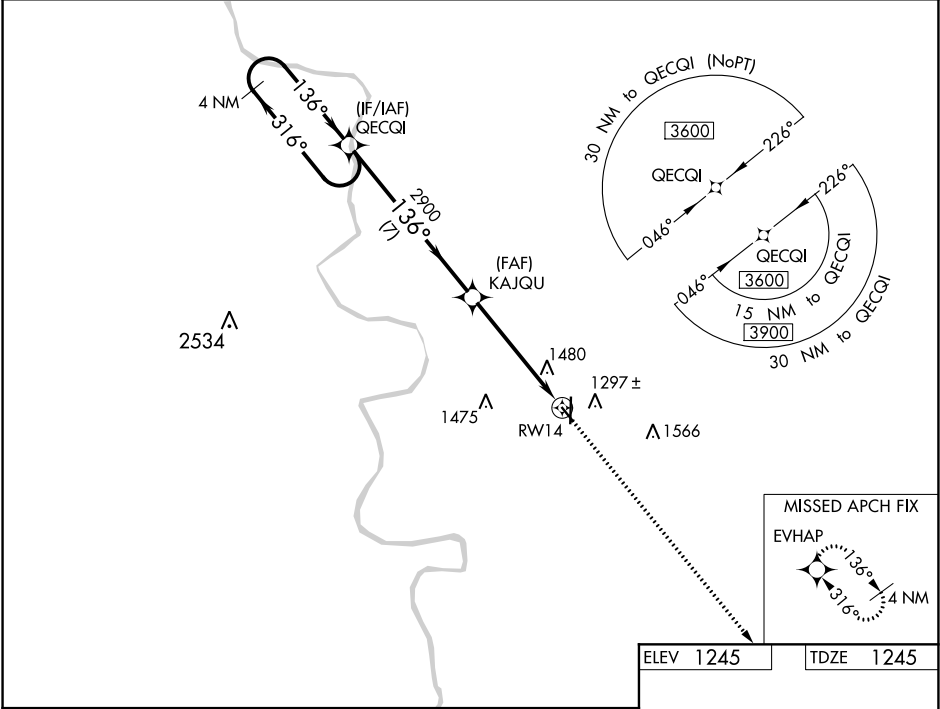
RNAV (GPS) RWY 14

COUNCIL BLUFFS MUNI (CBF)

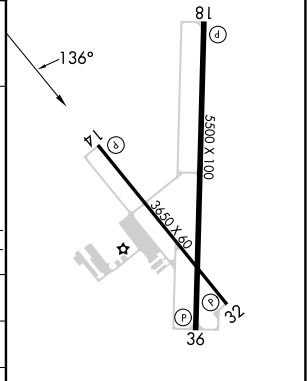
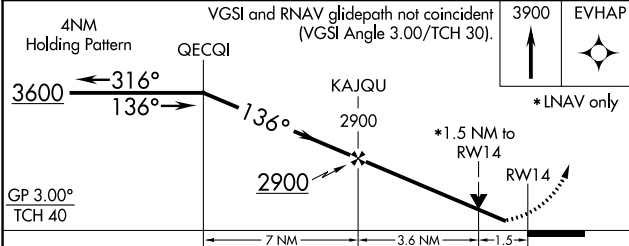
⚠ For uncompensated Baro-VNAV systems, LNAV/VNAV NA below -18°C (0°F) or above 54°C (130°F). Rwy 14 helicopter visibility reduction below ¾ SM NA. DME/DME RNP-0.3 NA.

MISSED APPROACH: Climb to 3900 direct EVHAP and hold.

AWOS-3 126.575	OMAHA APP CON 124.5 263.0	CLNC DEL 127.675	UNICOM 122.725 (CTAF) 0
--------------------------	-------------------------------------	----------------------------	--



ELEV 1245	TDZE 1245
-----------	-----------



MIRL Rwy 14-32 **0**
HIRL Rwy 18-36 **0**
REL Rws 14, 32, 18, and 36 **0**

NC-3, 31 OCT 2024 to 28 NOV 2024

NC-3, 31 OCT 2024 to 28 NOV 2024