

WAAS CH <b>78321</b> <b>W05A</b>	APP CRS <b>053°</b>	Rwy Idg <b>5717</b> TDZE <b>1313</b> Apt Elev <b>1313</b>
--	------------------------	---

# RNAV (GPS) RWY 5

MOORE-MURRELL (MOR)

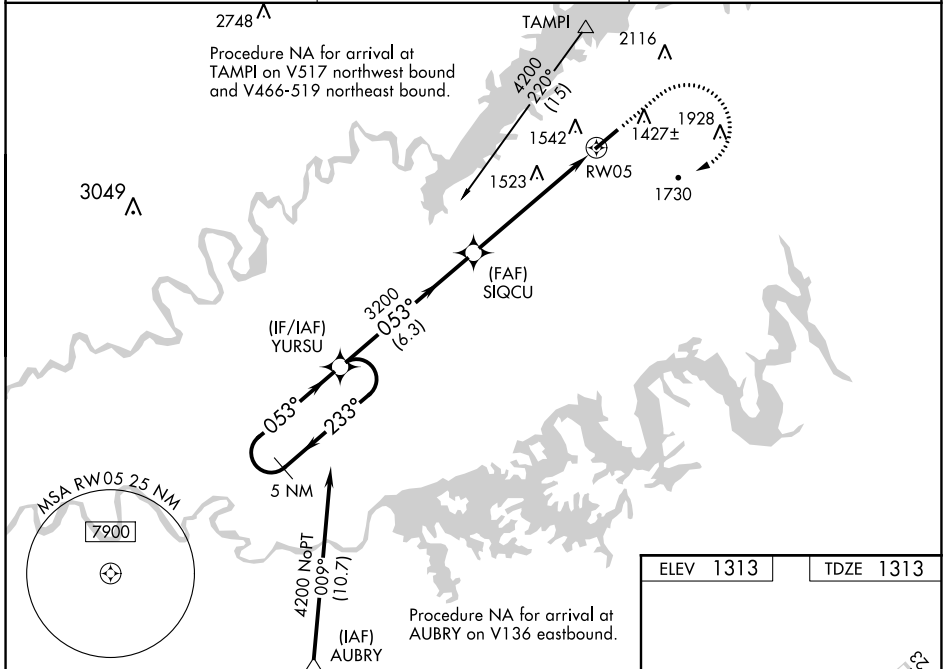
RNP APCH - GPS.

**NA** When local altimeter setting not received, use Mc Ghee Tyson altimeter setting and increase all MDA 140 feet, increase LP and LNAV Cats C/D visibility  $\frac{3}{8}$  SM, increase Circling Cat B visibility  $\frac{1}{4}$  SM and Cat C visibility  $\frac{1}{2}$  SM. For inop MALSf, increase LP and LNAV Cats C and D visibility to  $1\frac{3}{8}$  miles. For inop MALSf, when using Mc Ghee Tyson altimeter setting, increase LP and LNAV Cats C and D visibility to  $1\frac{3}{4}$  miles.

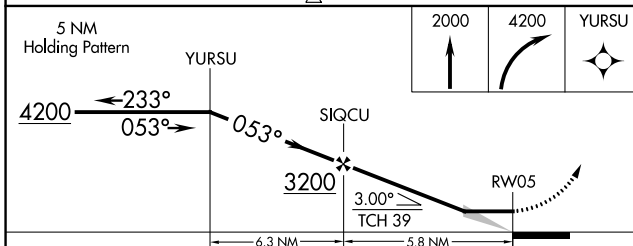
MALSf

MISSED APPROACH:  
Climb to 2000 then climbing right turn to 4200 direct YURSU and hold.

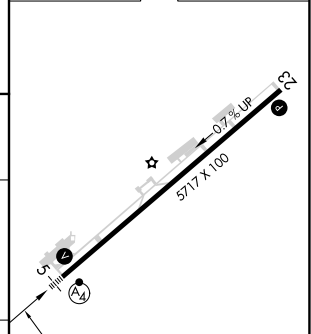
AWOS-3 <b>126.725</b>	KNOXVILLE APP CON <b>132.8 360.8</b>	UNICOM <b>122.8 (CTAF)</b>
--------------------------	---	-------------------------------



ELEV 1313	TDZE 1313
-----------	-----------



CATEGORY	A	B	C	D
LP MDA	1760- $\frac{7}{8}$	447 (500- $\frac{7}{8}$ )	1760-1	447 (500-1)
LNAV MDA	1780- $\frac{7}{8}$	467 (500- $\frac{7}{8}$ )	1780-1 $\frac{1}{8}$	467 (500-1 $\frac{1}{8}$ )
CIRCLING	1880-1 567 (600-1)	2020-1 707 (800-1)	2160-2 $\frac{1}{2}$ 847 (900-2 $\frac{1}{2}$ )	2420-3 1107 (1200-3)



REIL Rwy 5-23  
MIRL Rwy 5-23

SE-1, 31 OCT 2024 to 28 NOV 2024

SE-1, 31 OCT 2024 to 28 NOV 2024