

(BRSTL1.BRSTL) 23222

AL-5570 (FAA)

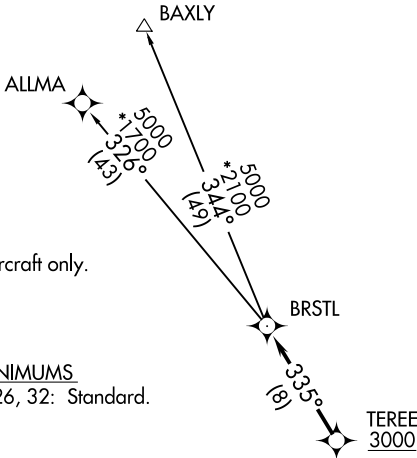
JACKSONVILLE INTL (JAX)
JACKSONVILLE, FLORIDA

BRSTL ONE DEPARTURE (RNAV)

TOP ALTITUDE:
3000

RNAV 1 - DME/DME/IRU or GPS.
RADAR required.

JACKSONVILLE DEP CON
127.0 292.15
D-ATIS
125.85
CLNC DEL
119.5 290.275
GND CON
121.9 348.6
JACKSONVILLE TOWER
118.3 317.7

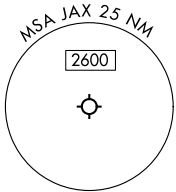


NOTE: Jet aircraft only.

TAKEOFF MINIMUMS

Rwys 8, 14, 26, 32: Standard.

TEREE
3000



JACKSONVILLE EXEC
AT CRAIG

NOTE: Chart not to scale.

DEPARTURE ROUTE DESCRIPTION

TAKEOFF ALL RUNWAYS: Climb on assigned heading for RADAR vectors to cross TERE at or above 3000 then on track 335° to BRSTL, then on (transition). Maintain 3000. Expect filed altitude 10 minutes after departure.

ALL AIRCRAFT: ATC CLIMB GRADIENT: If unable to accept climb rate, advise ATC prior to taxi.
Rwy 14: 400'/NM to 430.

ALLMA TRANSITION (BRSTL1.ALLMA)

BAXLY TRANSITION (BRSTL1.BAXLY)

BRSTL ONE DEPARTURE (RNAV)

(BRSTL1.BRSTL) 10AUG23

JACKSONVILLE, FLORIDA
JACKSONVILLE INTL (JAX)

SE-3, 31 OCT 2024 to 28 NOV 2024

SE-3, 31 OCT 2024 to 28 NOV 2024