

LOC I-CZH 110.5	APP CRS 137°	Rwy ldg TDZE Apt Elev 7701 27 30
---------------------------	------------------------	--

ILS Y or LOC Y RWY 14

JACKSONVILLE INTL (JAX)

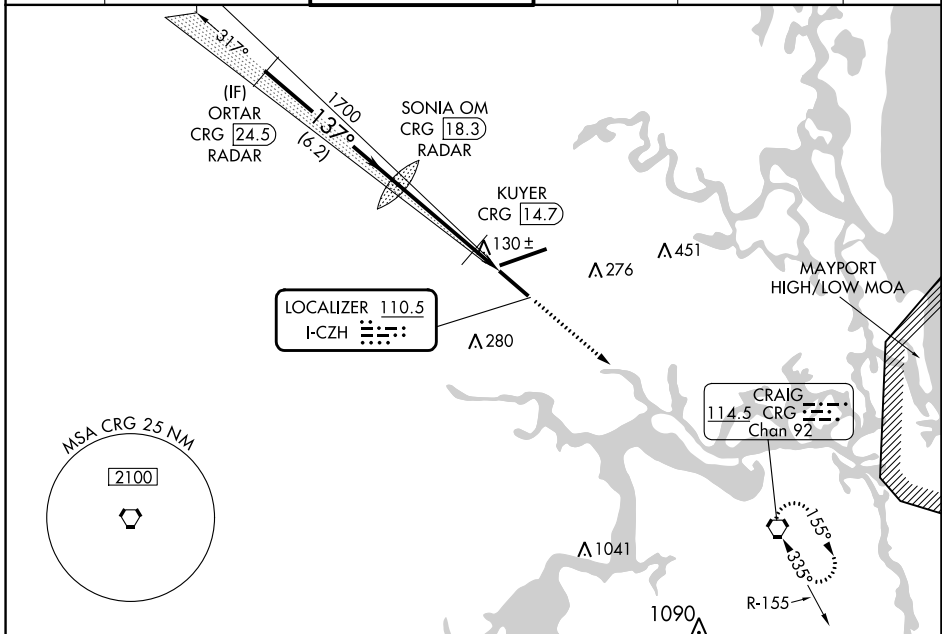
RADAR required for procedure entry, DME or RADAR required.

Autopilot coupled approach NA below 750 feet MSL. Rwy 14 helicopter visibility reduction below 3/4 SM NA. For inop ALS increase S-ILS 14 visibility all Cats to 3/8 SM, and increase S-LOC 14 Cats A and B visibility and KUYER Fix minimums S-LOC 14 visibility all to 1 SM.



MISSED APPROACH:
Climb to 3000 direct
CRG VORTAC and hold.

D-ATIS 125.85	JACKSONVILLE APP CON 119.0 269.9	JACKSONVILLE TOWER 118.3 317.7	GND CON 121.9 348.6	CLNC DEL 119.5 290.275	CPDLC
-------------------------	--	--	-------------------------------	----------------------------------	-------



SE-3, 31 OCT 2024 to 28 NOV 2024

SE-3, 31 OCT 2024 to 28 NOV 2024

VGSIs and ILS glidepath not coincident (VGSIs Angle 3.00/TCH 70).		3000	CRG	ELEV 30	TDZE 27
		↑	⬢		
GS 3.00° TCH 54	ORTAR CRG 24.5 RADAR	SONIA OM CRG 18.3 RADAR	KUYER CRG 14.7	CRG 13.5	
	6.2 NM	3.6 NM	1.2 NM		
CATEGORY	A	B	C	D	
S-ILS 14	306-3/4 279 (300-3/4)				
S-LOC 14	480-3/4 453 (500-3/4)		480-7/8 453 (500-7/8)		
CIRCLING <input checked="" type="checkbox"/>	520-1 490 (500-1)		580-1 1/2 550 (600-1 1/2)	580-2 550 (600-2)	
KUYER FIX MINIMUMS (DME REQUIRED)					
S-LOC 14	380-3/4 353 (400-3/4)				
CIRCLING <input checked="" type="checkbox"/>	520-1 490 (500-1)		580-1 1/2 550 (600-1 1/2)	580-2 550 (600-2)	
REIL Rwy 32 TDZ/CL Rwys 8, 14, and 26 HIRL Rwys 8-26 and 14-32					
FAF to MAP 4.8 NM					
Knots		60	90	120	150 180
Min:Sec		4:48	3:12	2:24	1:55 1:36