

# ILS Y or LOC Y RWY 8

JACKSONVILLE INTL (JAX)

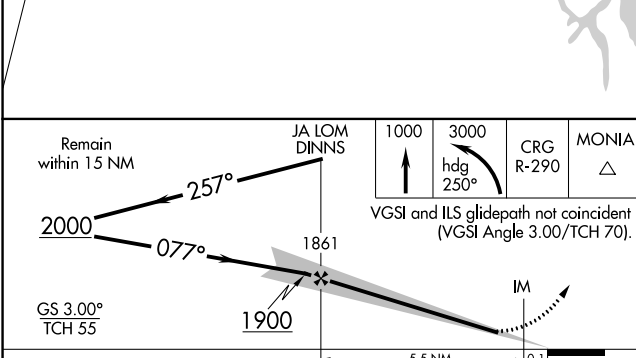
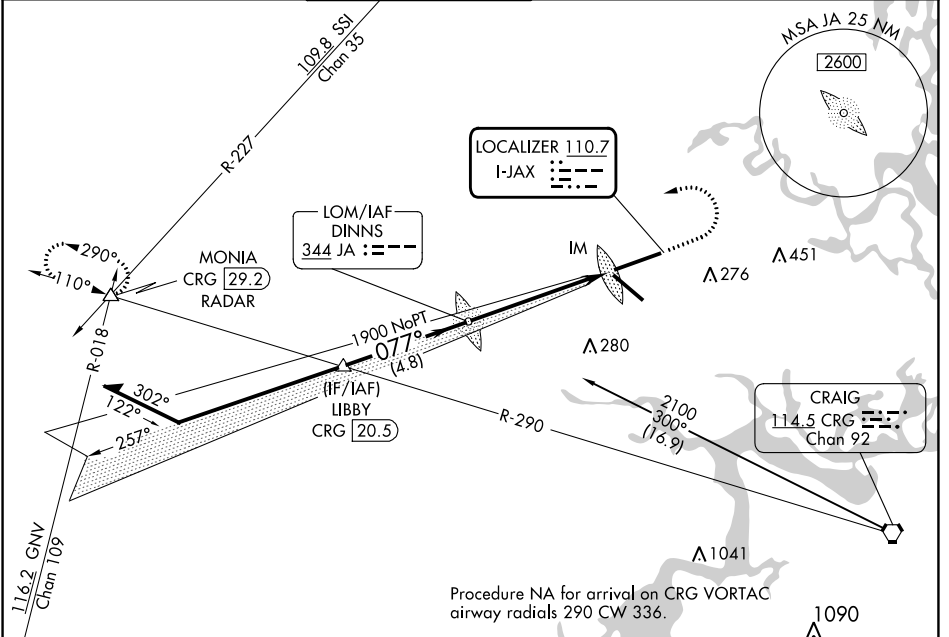
LOC I-JAX <b>110.7</b>	APP CRS <b>077°</b>	Rwy ldg <b>10000</b> TDZE <b>30</b> Apt Elev <b>30</b>
---------------------------	------------------------	--

**ALSIF-2**

For inop ALS, increase S-ILS 8 Cat E visibility to RVR 4000 and S-LOC 8 Cat E visibility to 1½ SM.

MISSED APPROACH: Climb to 1000 then climbing left turn to 3000 on heading 250° and on CRG VORTAC R-290 to MONIA INT/CRG 29.2 DME/RADAR and hold.

D-ATIS <b>125.85</b>	JACKSONVILLE APP CON <b>119.0 269.9</b>	JACKSONVILLE TOWER <b>118.3 317.7</b>	GND CON <b>121.9 348.6</b>	CLNC DEL <b>119.5 290.275</b>	CPDLC
-------------------------	--	--	-------------------------------	----------------------------------	-------



ELEV 30	TDZE 30
---------	---------

	Knots	60	90	120	150	180
	Min:Sec	5:36	3:44	2:48	2:14	1:52

SE-3, 31 OCT 2024 to 28 NOV 2024

SE-3, 31 OCT 2024 to 28 NOV 2024