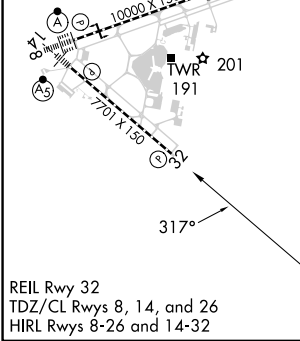
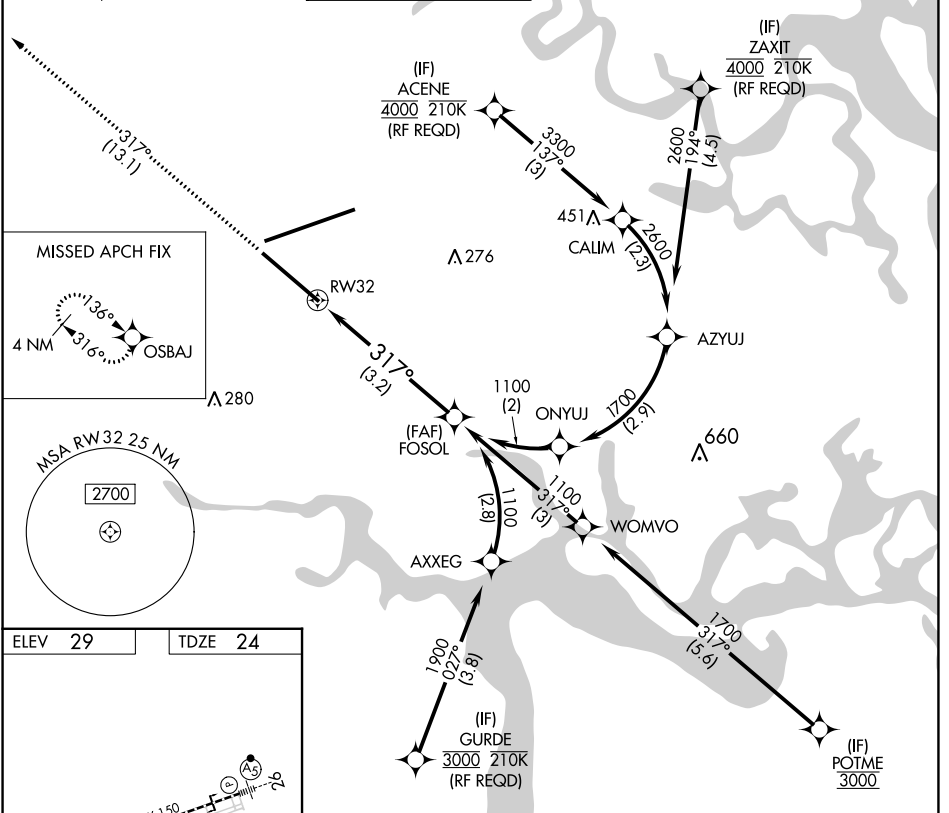


APP CRS	Rwy Idg	7701
317°	TDZE	24
	Apt Elev	29

RNAV (RNP) Y RWY 32

JACKSONVILLE INTL (JAX)

For uncompensated Baro-VNAV systems, procedure NA below -5°C (23°F) or above 54°C (130°F). GPS required.		MISSED APPROACH: Climb to 2000 on track 317° to OSBAJ and hold.			
D-ATIS	JACKSONVILLE APP CON	JACKSONVILLE TOWER	GND CON	CLNC DEL	CPDLC
125.85	119.0 269.9	118.3 317.7	121.9 348.6	119.5 290.275	



ELEV 29	TDZE 24	2000 OSBAJ tr 317°		VGSi and RNAV glidepath not coincident (VGSi Angle 3.00/TCH 67).	FOSOL 1100 GP 3.00° TCH 50
RW32 317° 1100 See planview for multiple IF locations.					
3.2 NM					
CATEGORY	A	B	C	D	
RNP 0.11 DA		359-1 1/8	334 (400-1 1/8)		
RNP 0.30 DA		423-1 1/8	399 (400-1 1/8)		

AUTHORIZATION REQUIRED

SE-3, 31 OCT 2024 to 28 NOV 2024

SE-3, 31 OCT 2024 to 28 NOV 2024