


APP CRS	Rwy Idg	<b>10000</b>
<b>077°</b>	TDZE	<b>29</b>
	Apt Elev	<b>29</b>

# RNAV (RNP) Y RWY 8

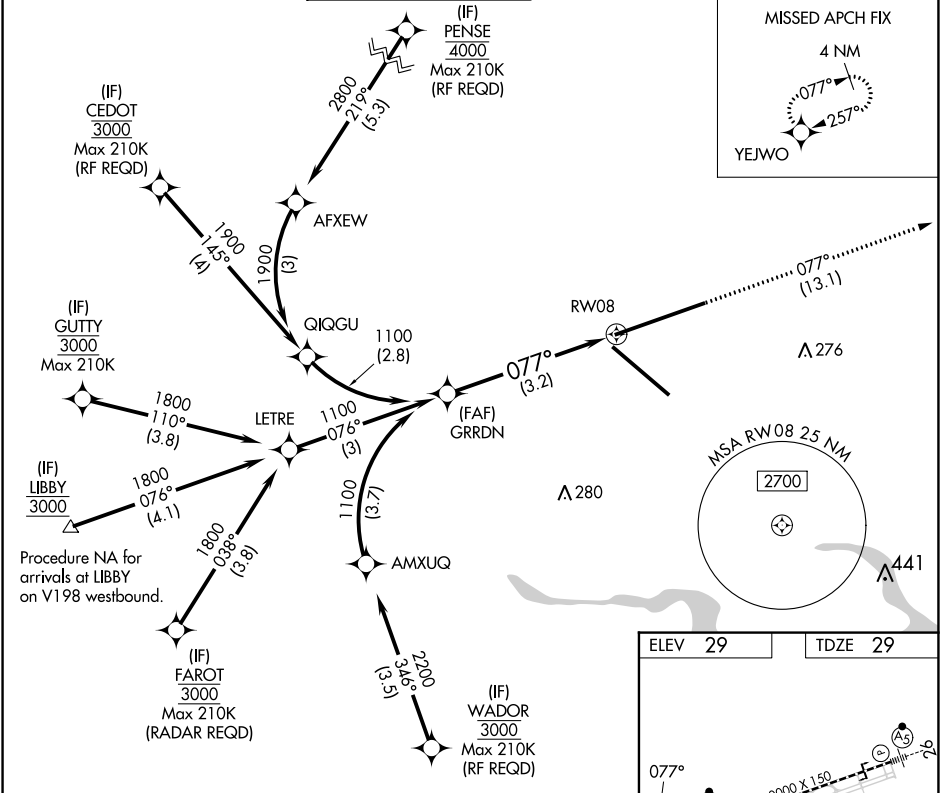
JACKSONVILLE INTL (JAX)

For uncompensated Baro-VNAV systems, procedure NAL below -5°C (23°F) or above 54°C (130°F). GPS required. For inop MALSR, increase RNP 0.11 all Cats visibility to 1 mile, increase RNP 0.30 all Cats visibility to 1½ mile.

ALSIF-2 

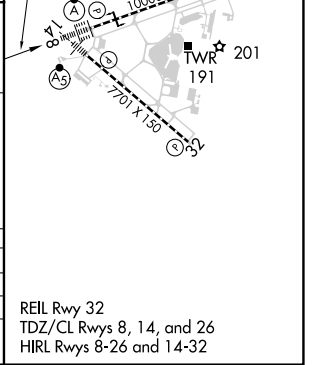
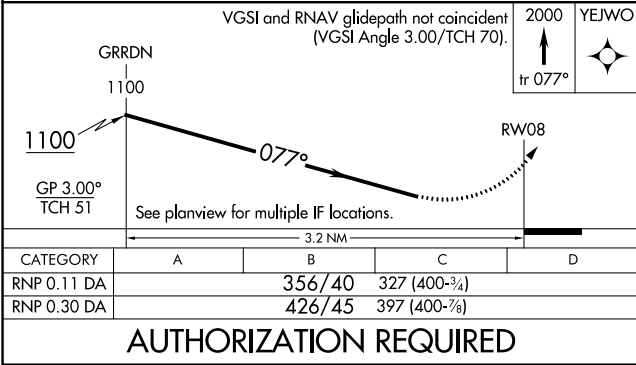
MISSED APPROACH: Climb to 2000 on track 077° to YEJWO and hold.

D-ATIS	JACKSONVILLE APP CON	JACKSONVILLE TOWER	GND CON	CLNC DEL	CPDLC
<b>125.85</b>	<b>119.0 269.9</b>	<b>118.3 317.7</b>	<b>121.9 348.6</b>	<b>119.5 290.275</b>	



SE-3, 31 OCT 2024 to 28 NOV 2024

SE-3, 31 OCT 2024 to 28 NOV 2024



## AUTHORIZATION REQUIRED