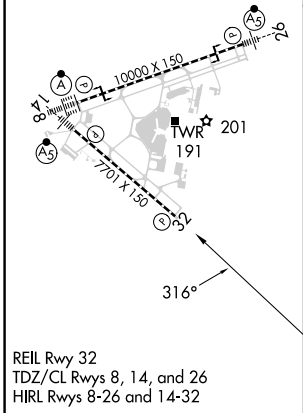
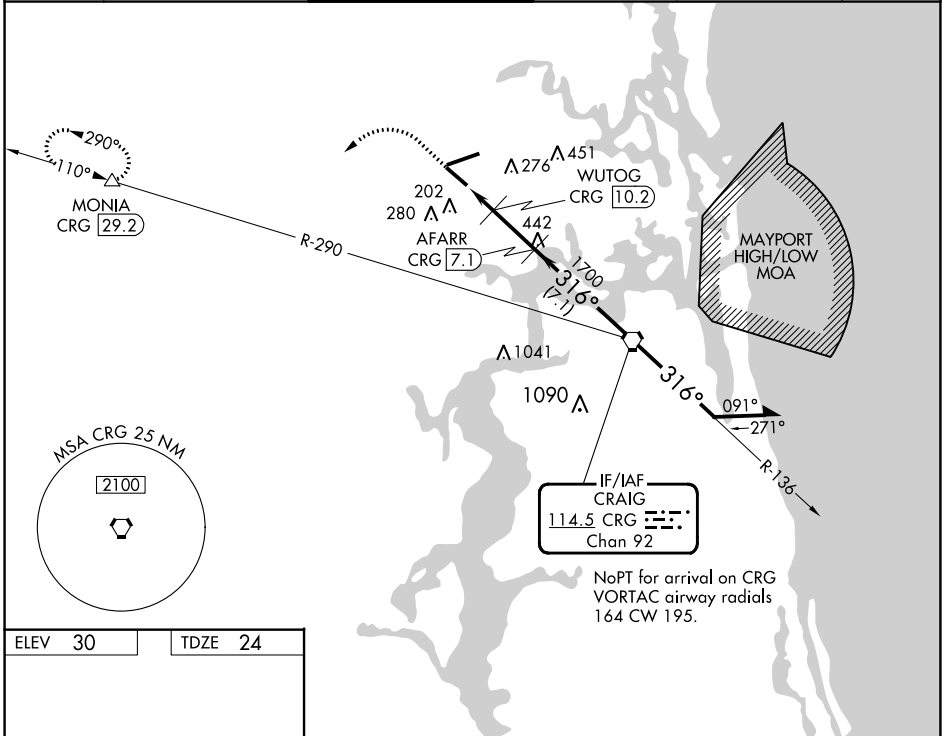


VORTAC CRG 114.5 Chan 92	APP CRS 316°	Rwy Idg TDZE Apt Elev	7701 24 30
--	------------------------	-----------------------------	---------------------------------------

VOR/DME RWY 32

JACKSONVILLE INTL (JAX)

<p>▼ Rwy 32 helicopter visibility reduction by below 3/4 SM NA. ▲ Cat E procedure turn NA.</p>		<p>MISSED APPROACH: Climb to 1000 then climbing left turn to 3000 on heading 250° and on CRG VORTAC R-290 to MONIA/CRG 29.2 DME and hold.</p>			
D-ATIS 125.85	JACKSONVILLE APP CON 119.0 269.9	JACKSONVILLE TOWER 118.3 317.7	GND CON 121.9 348.6	CLNC DEL 119.5 290.275	CPDLC



1000	3000	CRG R-290	MONIA	VGSI and ILS glidepath not coincident (VGSI Angle 3.05/TCH 68).	
↑	hdg 250°		△		
		AFARR CRG 7.1	CRG VORTAC 6000	Remain within 10 NM	
		WUTOG CRG 10.2	136°	2100	
		CRG 12.2	316°		
		CRG 11.1			
		720			
		1700			
		1.1 0.9 → 3.1 NM			
CATEGORY	A	B	C	D	E
S-32	460-1	436 (500-1)	460-1 1/4	436 (500-1 1/4)	
CIRCLING	520-1	490 (500-1)	580-1 1/2 550 (600-1 1/2)	580-2 550 (600-2)	760-2 1/2 730 (800-2 1/2)

SE-3, 31 OCT 2024 to 28 NOV 2024

SE-3, 31 OCT 2024 to 28 NOV 2024