

LOC/DME I-CXO 108.7 Chan 24	APP CRS 140°	Rwy Idg 7501 TDZE 236 Apt Elev 245
---	------------------------	---

ILS or LOC RWY 14

CONROE/NORTH HOUSTON RGNL (CXO)

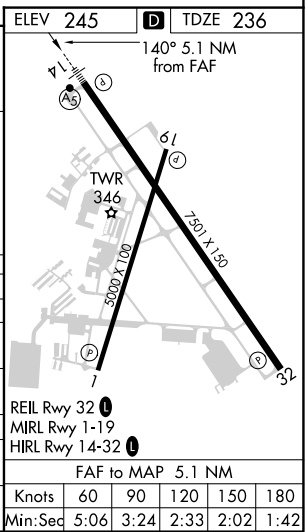
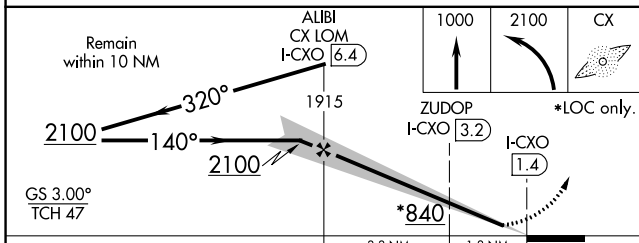
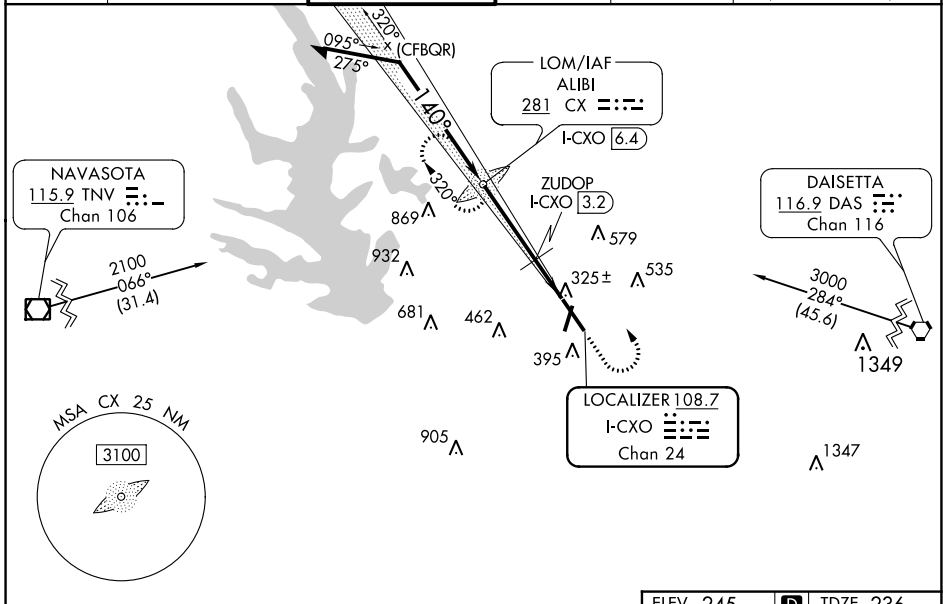
ADF required.

▼
▲ NA

MALSR

MISSED APPROACH: Climb to 1000 then climbing left turn to 2100 direct ALIBI LOM/I-CXO 6.4 DME and hold.

ATIS 118.325	HOUSTON APP CON 119.7 281.4	CONROE TOWER ★ 124.125 (CTAF) 0	GND CON 120.45	CLNC DEL 120.45	CLNC DEL 119.55 (When twr closed)
------------------------	---------------------------------------	--	--------------------------	---------------------------	--



CATEGORY	A	B	C	D
S-ILS 14		436-½	200 (200-½)	
S-LOC 14	840-½	604 (600-½)	840-1¾	604 (600-1¾)
CIRCLING	840-1	595 (600-1)	880-1¾ 635 (700-1¾)	960-2¼ 715 (800-2¼)
ZUDOP FIX MINIMUMS				
S-LOC 14	640-½	404 (400-½)	640-¾	404 (400-¾)
CIRCLING	700-1	455 (500-1)	880-1¾ 635 (700-1¾)	960-2¼ 715 (800-2¼)

REIL Rwy 32	MIRL Rwy 1-19	HIRL Rwy 14-32	FAF to MAP 5.1 NM			
Knots	60	90	120	150	180	
Min:Sec	5:06	3:24	2:33	2:02	1:42	

SC-5, 31 OCT 2024 to 28 NOV 2024

SC-5, 31 OCT 2024 to 28 NOV 2024