

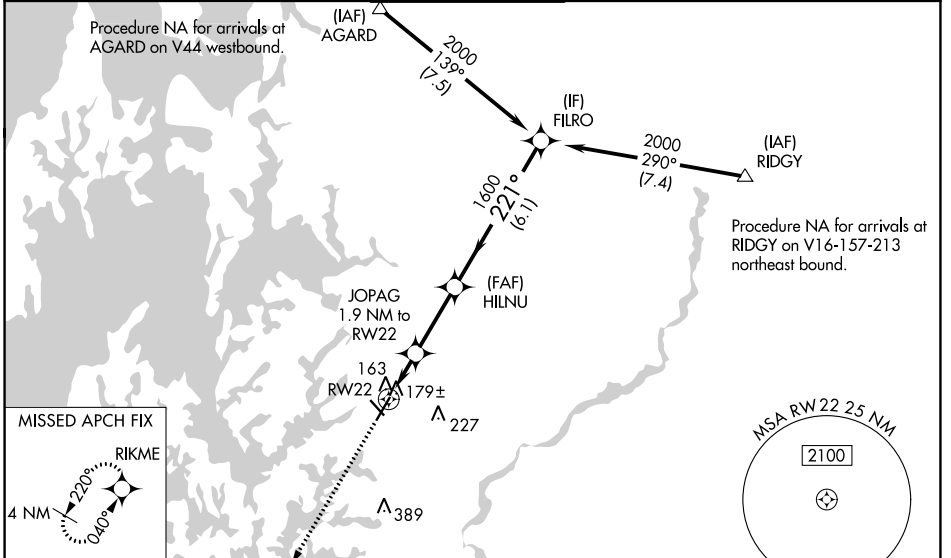
| | | |
|--|------------------------|---|
| WAAS CH 40207 W22A | APP CRS 221° | Rwy Idg 5175 TDZE 72 Apt Elev 72 |
|--|------------------------|---|

RNAV (GPS) RWY 22

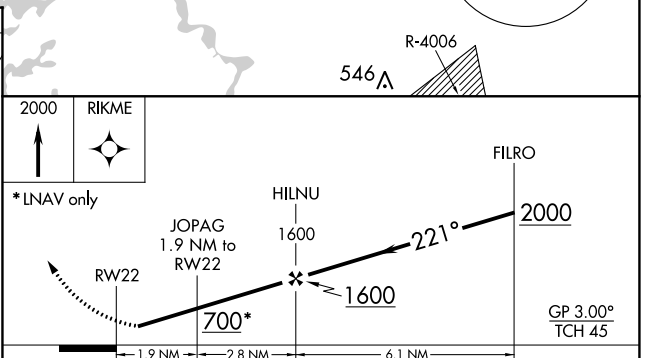
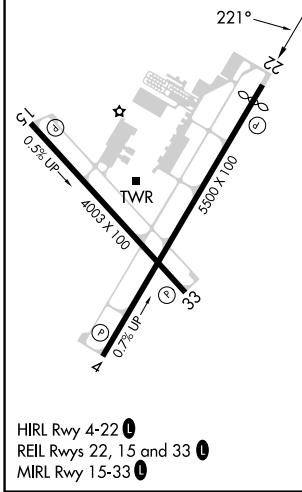
EASTON/NEWNAM FLD (E5N)

| | | |
|-----------|--|--|
| RNP APCH. | <p>Baro-VNAV NA when using Baltimore altimeter setting. For uncompensated Baro-VNAV systems, LNAV/VNAV NA below -15°C or above 43°C. Rwy 22 helicopter visibility reduction below 3/4 SM NA. When local altimeter setting not received, use Baltimore altimeter setting and increase all DA 93 feet and all MDA 100 feet; increase LPV all Cats visibility 1/2 SM, increase LNAV/VNAV all Cats visibility 1/4 SM, and increase LNAV Cats C and D 1/4 SM.</p> | <p>MISSED APPROACH: Climb to 2000 direct RIKME and hold.</p> |
| | | |

| | | | | |
|------------------------|---|--|---------------------------|----------------------------|
| ATIS 124.475 | POTOMAC APP CON 133.75 254.35 | EASTON TOWER ★ 118.525 (CTAF) 0 | GND CON 119.075 | CLNC DEL 119.075 |
|------------------------|---|--|---------------------------|----------------------------|



| | | |
|---------|----------|---------|
| ELEV 72 | D | TDZE 72 |
|---------|----------|---------|



| CATEGORY | A | B | C | D |
|--------------|---|-------|-------------|---|
| LPV DA | | 322-1 | 250 (300-1) | |
| LNAV/VNAV DA | | 362-1 | 290 (300-1) | |
| LNAV MDA | | 440-1 | 368 (400-1) | |

NE-3, 31 OCT 2024 to 28 NOV 2024

NE-3, 31 OCT 2024 to 28 NOV 2024