

APP CRS	Rwy Idg	<b>5003</b>
<b>074°</b>	TDZE	<b>643</b>
	Apt Elev	<b>647</b>

# RNAV (GPS) RWY 8

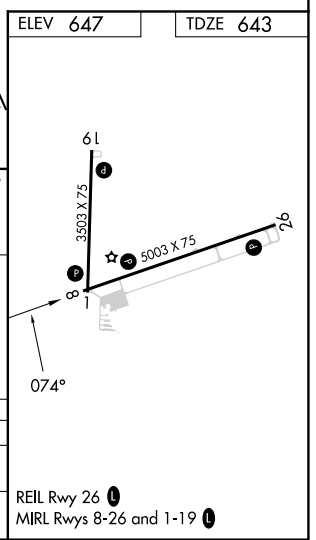
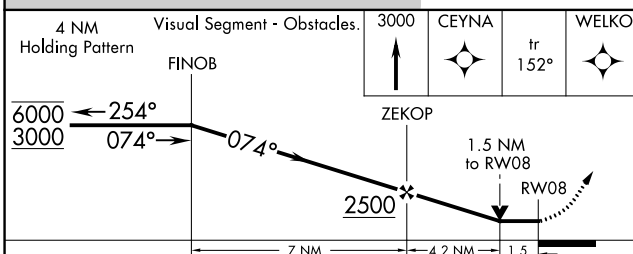
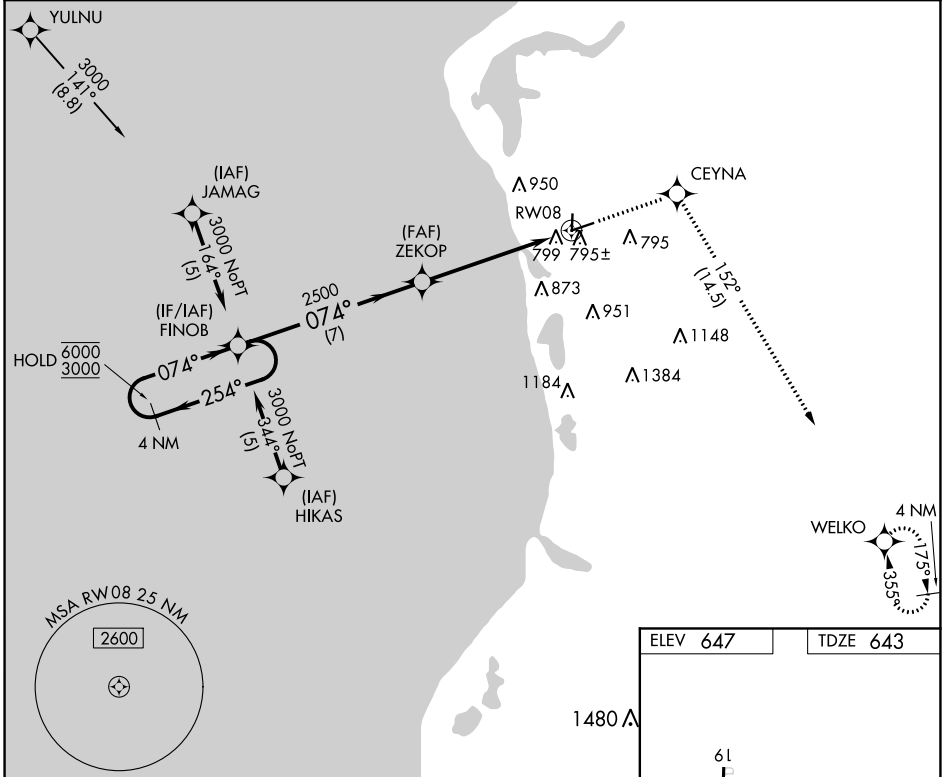
MASON COUNTY (LDM)

RNP APCH-GPS.

**▼** Circling Rwy 1, 19 NA at night.  
**▲** Rwy 8 helicopter visibility reduction below ¾ SM NA.

MISSED APPROACH: Climb to 3000 direct CEYNA and on track 152° to WELKO and hold.

AWOS-3 <b>119.925</b>	MINNEAPOLIS CENTER <b>120.85 322.35</b>	UNICOM <b>123.0 (CTAF) 0</b>
--------------------------	--	---------------------------------



CATEGORY	A	B	C	D
LNVA MDA	1140-1	497 (500-1)	1140-1 3/8	497 (500-1 3/8)
CIRCLING	1160-1 513 (600-1)	1200-1 553 (600-1)	1260-1 3/4 613 (700-1 3/4)	1460-2 3/4 813 (900-2 3/4)

EC-1, 31 OCT 2024 to 28 NOV 2024

EC-1, 31 OCT 2024 to 28 NOV 2024