

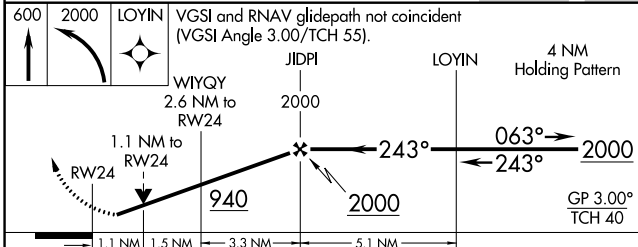
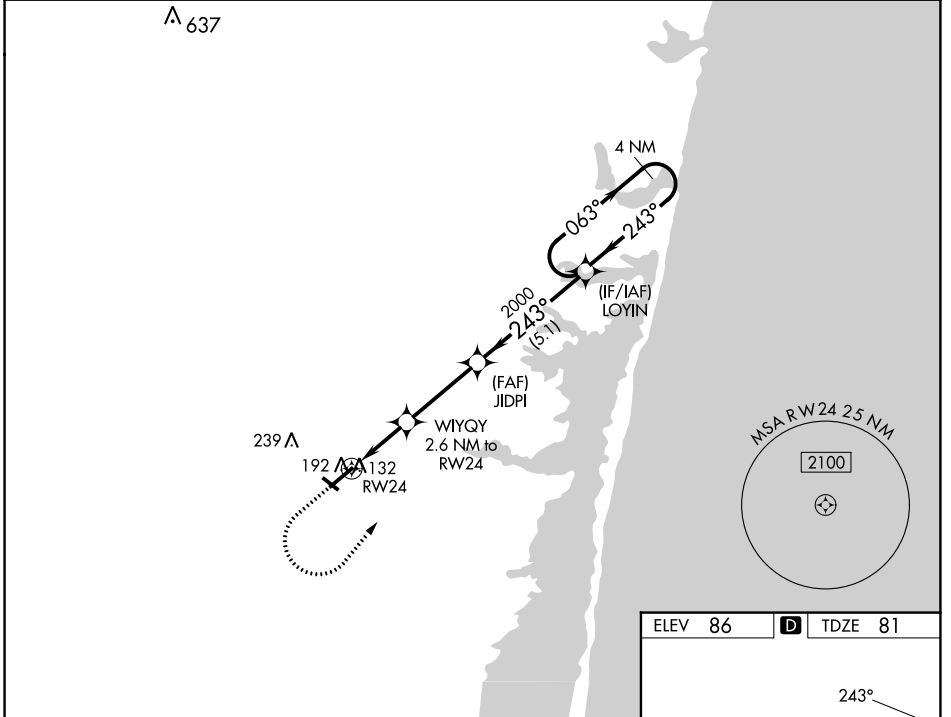
WAAS CH <b>86433</b> <b>W24A</b>	APP CRS <b>243°</b>	Rwy Idg TDZE Apt Elev	<b>5835</b> <b>81</b> <b>86</b>
--	------------------------	-----------------------------	---------------------------------------

# RNAV (GPS) RWY 24

OCEAN COUNTY (MJX)

RNP APCH - GPS.	MISSED APPROACH: Climb to 600 then climbing left turn to 2000 direct to LOYIN and hold.
-----------------	---

AWOS-3PT <b>119.875</b>	MC GUIRE APP CON <b>126.475 363.8</b>	UNICOM <b>122.7</b> (CTAF) <b>📞</b>
----------------------------	--	--



ELEV 86	<b>D</b>	TDZE 81
---------	----------	---------

Obstacle chart showing RWY 24 with obstacles at 125 feet and 5350 feet, and a 0.3% up-slope. Includes MIRL, HIRL, and REIL lights.

CATEGORY	A	B	C	D
LPV DA		331-3/4	250 (300-3/4)	
LNAV/VNAV DA		358-7/8	277 (300-7/8)	
LNAV MDA		460-1	379 (400-1)	
<b>C</b> CIRCLING	540-1 454 (500-1)	560-1 474 (500-1)	580-1 1/2 494 (500-1 1/2)	700-2 614 (700-2)

MIRL Rwy 14-32 **📞**  
 HIRL Rwy 6-24 **📞**  
 REIL Rwy 14, 24 and 32 **📞**

NE-2, 31 OCT 2024 to 28 NOV 2024

NE-2, 31 OCT 2024 to 28 NOV 2024