

APP CRS	Rwy Idg	<b>4002</b>
<b>076°</b>	TDZE	<b>1228</b>
	Apt Elev	<b>1228</b>

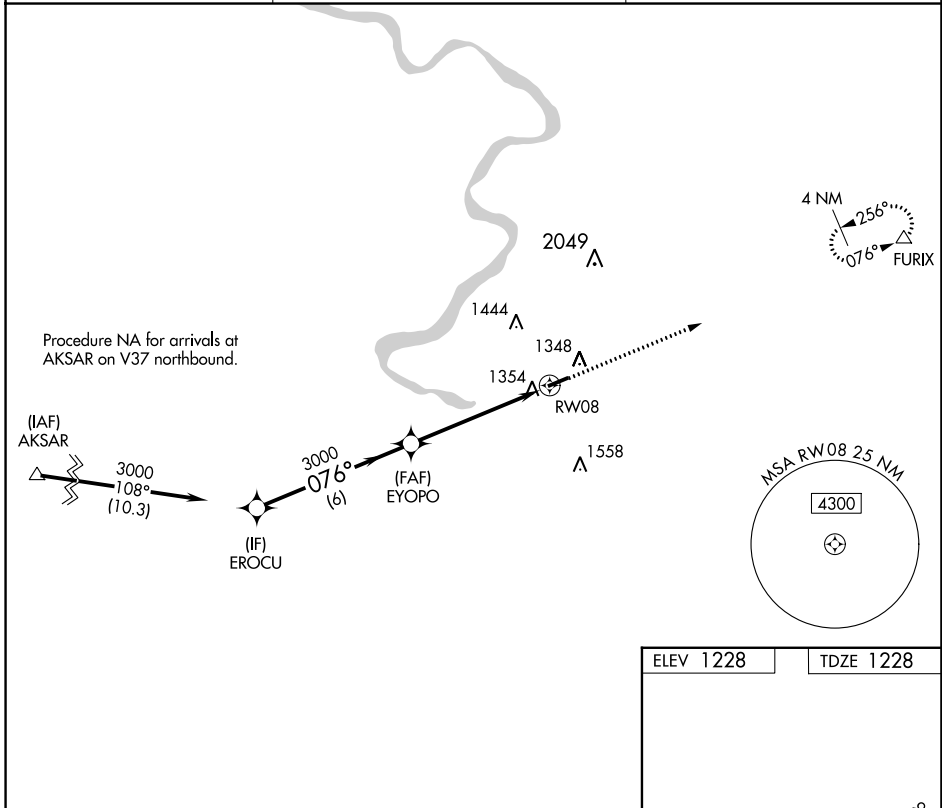
# RNAV (GPS) RWY 8

ROSTRAVER (FWQ)

**▼** When VGSI inop, Straight-in/Circling Rwy 8 procedure NA at night. DME/DME RNP-0.3  
**▲ NA** NA. When local altimeter setting not received, use Allegheny County altimeter setting and increase all MDA 40 feet; increase LNAV Cats C/D visibility 1/8 mile. Rwy 8 helicopter visibility reduction below 1 SM NA. Rwy 26 helicopter visibility reduction below 3/4 SM NA.

**MISSED APPROACH:**  
 Climb to 3700 direct  
 FURIX and hold.

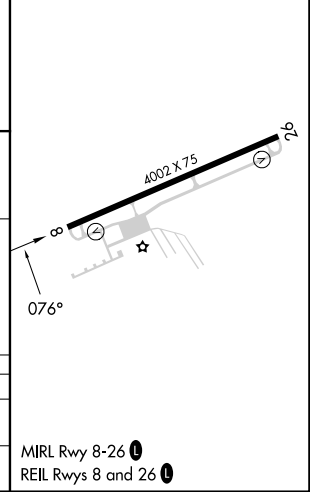
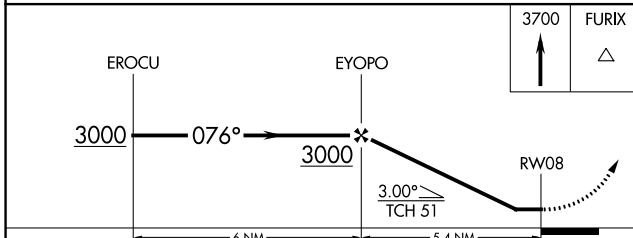
AWOS-3 <b>118.475</b>	PITTSBURGH APP CON <b>119.35 337.4</b>	UNICOM <b>122.8 (CTAF) 0</b>
--------------------------	---	---------------------------------



NE-4, 31 OCT 2024 to 28 NOV 2024

NE-4, 31 OCT 2024 to 28 NOV 2024

ELEV 1228	TDZE 1228
-----------	-----------



CATEGORY	A	B	C	D
LNAV MDA	1720-1	492 (500-1)	1720-1 3/8	492 (500-1 3/8)
CIRCLING	1720-1 492 (500-1)	1760-1 532 (600-1)	1760-1 1/2 532 (600-1 1/2)	1920-2 1/4 692 (700-2 1/4)