

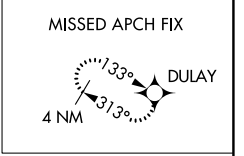
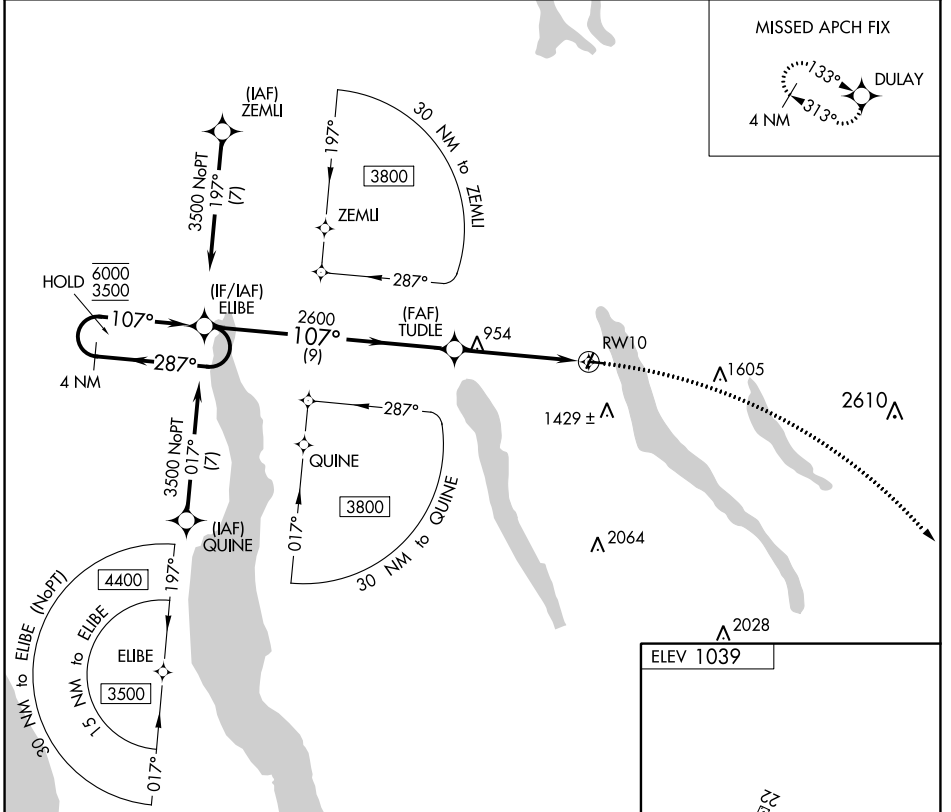
APP CRS	Rwy Idg	N/A
107°	TDZE	N/A
	Apt Elev	1039

RNAV (GPS)-A

SKANEATELES AERO DROME (6B9)

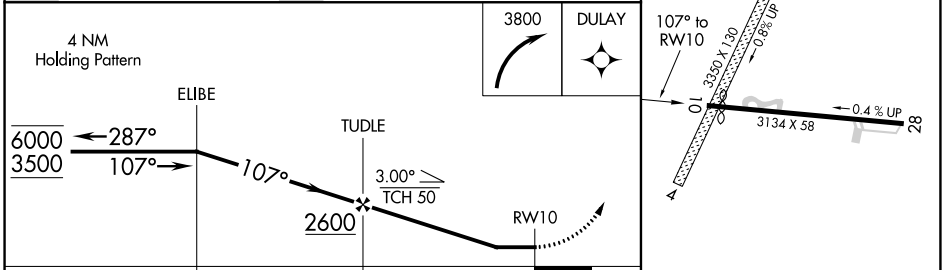
RNP APCH - GPS.	MISSED APPROACH: Climbing right turn to 3800 direct DULAY and hold.
<p>⚠ Circling NA to Rwys 4 and 22. Circling to Rwy 28 NA at night.</p> <p>⚠ Rwy 28 helicopter visibility reduction below 1 SM NA.</p>	

AWOS-3P 120.125	SYRACUSE APP CON 126.125 269.125	UNICOM 122.8 (CTAF) 0
---------------------------	--	---------------------------------



NE-2, 31 OCT 2024 to 28 NOV 2024

NE-2, 31 OCT 2024 to 28 NOV 2024



CATEGORY	A	B	C	D
CIRCLING	1600-1 561 (600-1)	1700-1 661 (700-1)	1780-2¼ 741 (800-2¼)	NA

REIL Rwys 10 and 28
MIRL Rwy 10-28 0