


| | | |
|-------------------------------|------------------------|------------------------|
| LOC/DME I-JLS 110.3 | APP CRS 051° | Rwy Idg 5002 |
| | | TDZE 193 |
| | | Apt Elev 193 |

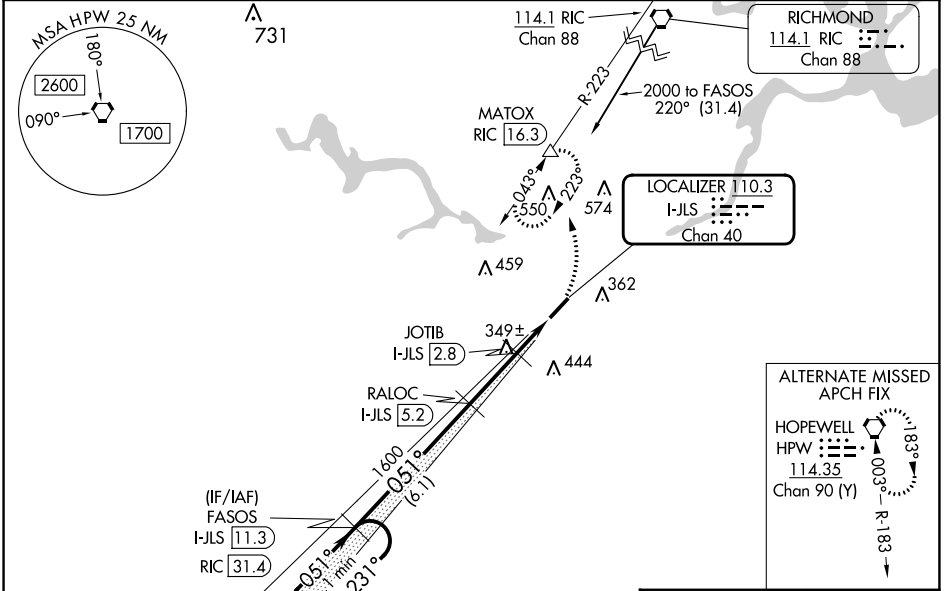
LOC RWY 5

TRI CITIES EXEC/DINWIDDIE COUNTY (P'TB)

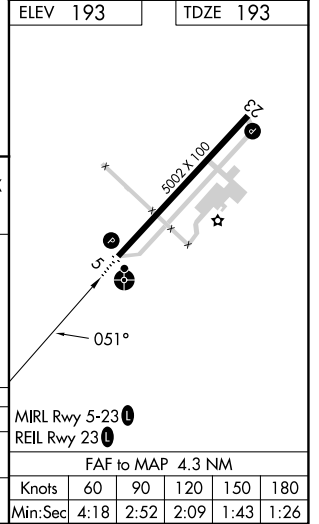
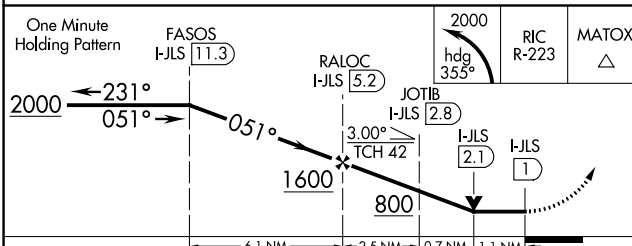
⚠ **⚠** DME required. Helicopter visibility reduction below 3/4 SM NA. VDP NA when using Richmond Exec/Chesterfield County altimeter setting. When local altimeter setting not received, use Richmond Exec/Chesterfield County altimeter setting and increase all MDA 40 feet; increase S-LOC 5 Cat C visibility 1/8 mile and Circling Cat C visibility 1/4 mile. For inop ODALS, increase S-LOC 5 Cat C visibility to 1 1/8 mile. Inop table does not apply to S-LOC 5 Cat A and B. Inop table does not apply to S-LOC Cat A and B when using Richmond Exec/Chesterfield County altimeter setting.

ODALS  **MISSED APPROACH:** Climbing left turn to 2000 on heading 355° and on RIC VORTAC R-223 to MATOX/RIC 16.3 DME and hold.

| | | | |
|--------------------------|--|-----------------------|---------------------------------|
| AWOS-3 133.325 | POTOMAC APP CON 126.75 307.2 | GCO 135.075 | UNICOM 122.7 (CTAF) 0 |
|--------------------------|--|-----------------------|---------------------------------|



DME REQUIRED



| | | | | |
|-------------------|-------|-------------|------------------------------|----|
| CATEGORY | A | B | C | D |
| S-5 | 600-1 | 407 (500-1) | | NA |
| C CIRCLING | 680-1 | 487 (500-1) | 760-1 1/2 567 (600-1 1/2) | NA |

LOC RWY 5

NE-3, 31 OCT 2024 to 28 NOV 2024

NE-3, 31 OCT 2024 to 28 NOV 2024