

LOC/DME I-BW/M 111.95 Chan 56(Y)	APP CRS 177°	Rwy Idg TDZE Apt Elev 5199 1182 1182
--	------------------------	---

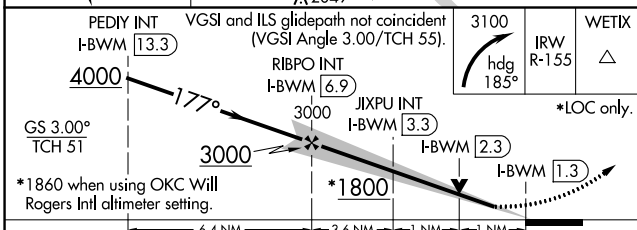
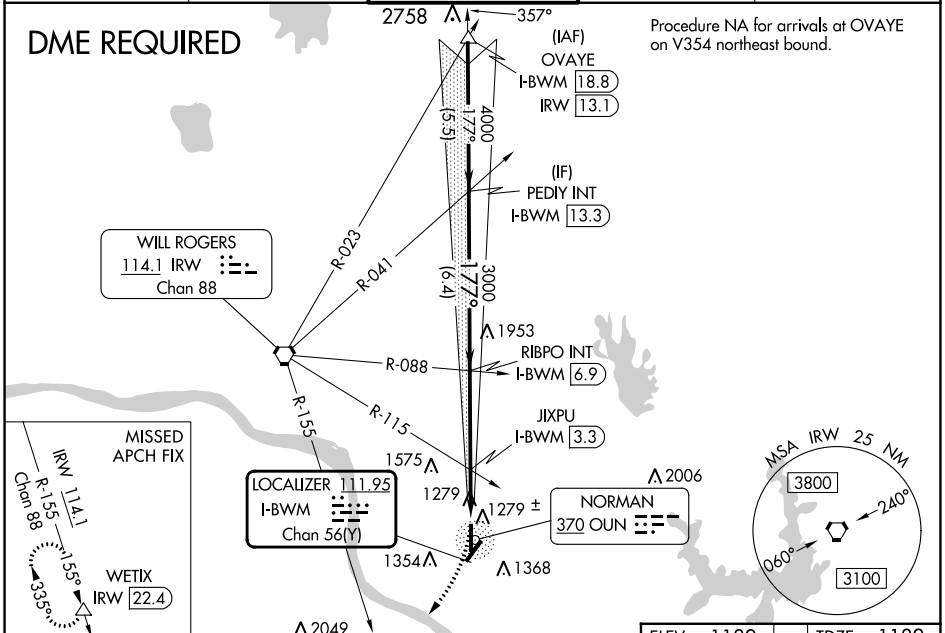
ILS or LOC RWY 18

UNIVERSITY OF OKLAHOMA WESTHEIMER (OUN)

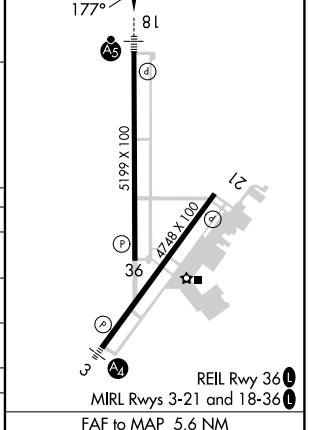
⚠ Circling NA southeast of Rwy 3-21. DME Required. VDP NA with OKC Will Rogers Intl altimeter setting. When local altimeter setting not received, use OKC Will Rogers Intl altimeter setting and increase all DA 41 feet; increase all MDA 60 feet. Increase visibility S-LOC 18 and JXPU Fix Minimums Cats C/D 1/2 mile, increase Circling Cats C/D 1/4 mile.

MALS
MISSED APPROACH: Climbing right turn to 3100 on heading 185° and IRW VORTAC R-155 to WETIX/IRW VORTAC 22.4 DME and hold.

AWOS-3PT 119.55	OKE CITY APP CON 120.45 288.325	WESTHEIMER TOWER ★ 118.0 (CTAF) 0	GND CON 121.6	UNICOM 122.95
---------------------------	---	--	-------------------------	-------------------------



ELEV 1182	TDZE 1182
------------------	------------------



CATEGORY	A	B	C	D
S-ILS 18		1382-1/2	200 (200-1/2)	
S-LOC 18	1800-1/2	618 (700-1/2)	1800-13/8	618 (700-13/8)
C CIRCLING	1800-1	618 (700-1)	1940-2 1/4 758 (800-2 1/4)	1940-2 1/2 758 (800-2 1/2)
JIXPU FIX MINIMUMS (DUAL VOR RECEIVERS OR DME REQUIRED)				
S-LOC 18	1540-1/2	358 (400-1/2)	1540-5/8	358 (400-5/8)
C CIRCLING	1660-1	478 (500-1)	1940-2 1/4 758 (800-2 1/4)	1940-2 1/2 758 (800-2 1/2)

Knots	60	90	120	150	180
	Min:Sec	5:36	3:44	2:48	2:14