

LOC/DME I-MSV 109.1 Chan 28	APP CRS 155°	Rwy Ldg 5900 TDZE 1403 Apt Elev 1403
---	------------------------	---

ILS or LOC RWY 15

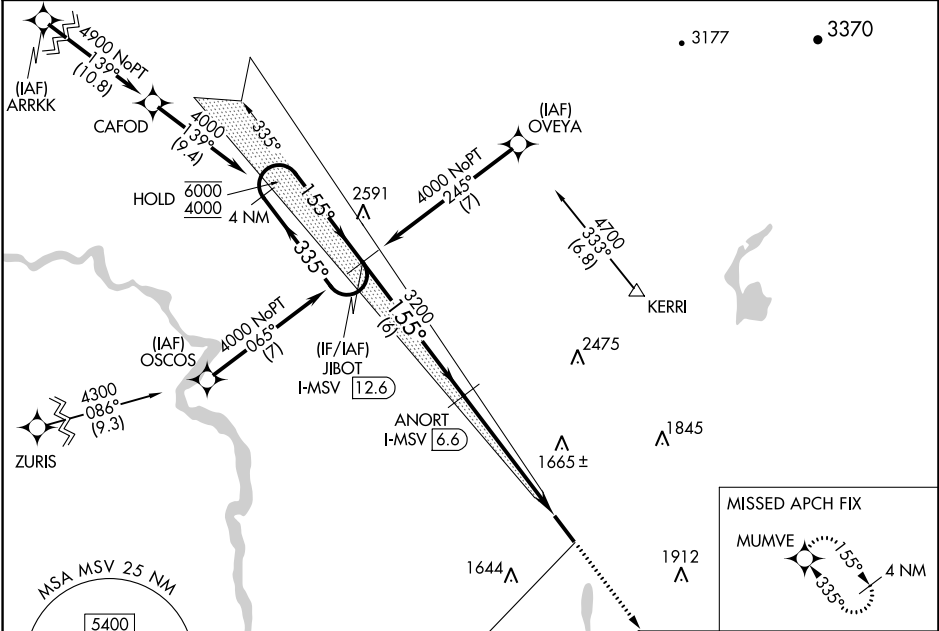
SULLIVAN COUNTY INTL (MSV)

RNP APCH - GPS.

⚠ VDP NA when using New York Stewart Intl altimeter setting. When local altimeter setting not received, use New York Stewart Intl altimeter setting; increase S-ILS 15 DA to 1858 feet and all visibilities 3/4 SM; increase all MDAs 220 feet and S-LOC 15 visibility Cat B, C and D 7/8 SM, and Circling Cat B, C and D visibilities 3/4 SM.

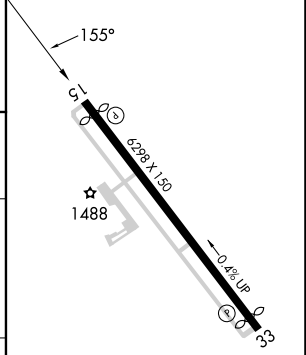
MISSED APPROACH: Climb to 3300 direct MUMVE and hold.

AWOS-3PT 124.725	NEW YORK APP CON 132.75 363.1	CLNC DEL 121.6	UNICOM 122.8 (CTAF) 0
----------------------------	---	--------------------------	---------------------------------



ELEV 1403	D TDZE 1403
-----------	--------------------

4 NM Holding Pattern	JIBOT I-MSV 12.6	ANORT I-MSV 12.6	I-MSV 2.7	I-MSV 1.0	I-MSV 1.6
6000 ← 335°	← 155°	→ 155°	→ 3200	→ 3200	→ 3200
4000					
GS 3.00° TCH 41					
	6 NM	3.9 NM	1.6 NM		



CATEGORY	A	B	C	D
S-ILS 15		1653-3/4	250 (300-3/4)	
S-LOC 15	1960-1 557 (600-1)		1960-1 3/4 557 (600-1 3/4)	
C CIRCLING	1960-1 557 (600-1)		2020-1 3/4 617 (700-1 3/4)	2180-2 1/2 777 (800-2 1/2)

REIL Rwy 15 and 33 0					
HRL Rwy 15-33 0					
FAF to MAP 5.5 NM					
Knots	60	90	120	150	180
Min:Sec	5:30	3:40	2:45	2:12	1:50

NE-2, 31 OCT 2024 to 28 NOV 2024

NE-2, 31 OCT 2024 to 28 NOV 2024