

WAAS CH <b>56615</b> <b>W15A</b>	APP CRS <b>155°</b>	Rwy Ldg TDZE Apt Elev	<b>5900</b> <b>1403</b> <b>1403</b>
--	------------------------	-----------------------------	---

# RNAV (GPS) RWY 15

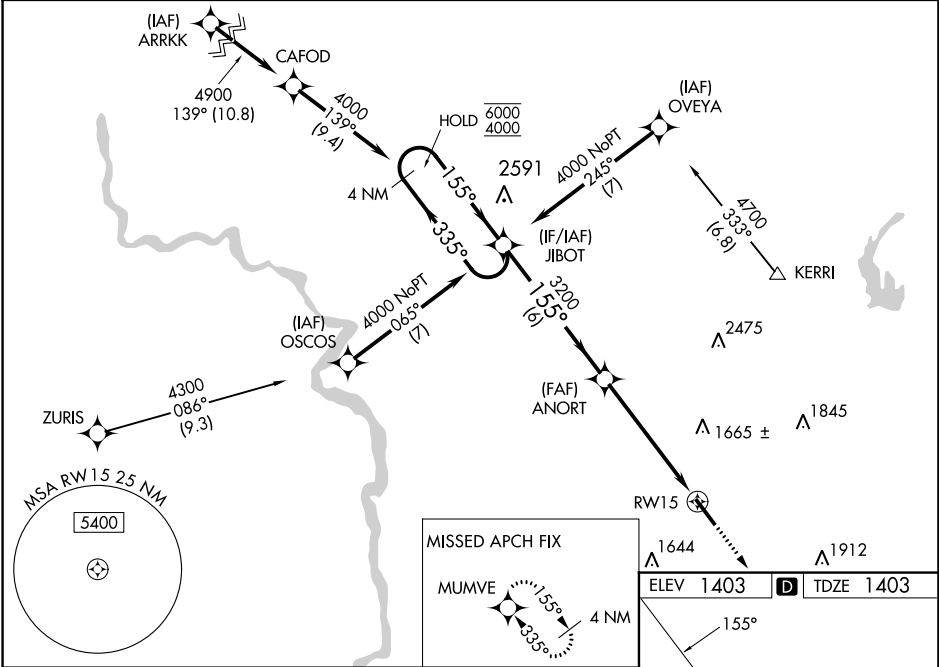
SULLIVAN COUNTY INTL (MSV)

RNP APCH - GPS.

**▼** Baro-VNAV and VDP NA when using New York Stewart Intl altimeter setting. For uncompensated Baro-VNAV systems, LNAV/VNAV NA below -17°C or above 54°C. When local altimeter setting not received, use New York Stewart Intl altimeter setting; increase LPV DA to 1858 feet and all visibilities  $\frac{3}{8}$  SM; increase LNAV/VNAV DA to 2077 feet and all visibilities  $\frac{1}{2}$  SM; increase all MDAs 220 feet and LNAV visibility Cat B, C and D  $\frac{3}{8}$  SM, and Circling visibility Cat B, C, and D  $\frac{3}{4}$  SM.

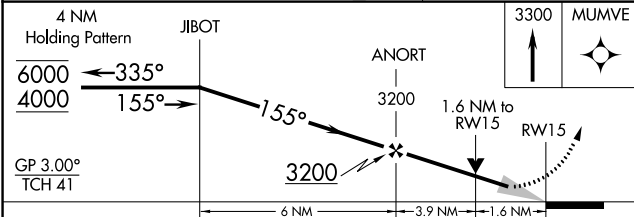
**MISSED APPROACH:**  
Climb to 3300 direct MUMVE and hold.

AWOS-3PT <b>124.725</b>	NEW YORK APP CON <b>132.75 363.1</b>	CLNC DEL <b>121.6</b>	UNICOM <b>122.8 (CTAF)</b>
----------------------------	---	--------------------------	-------------------------------



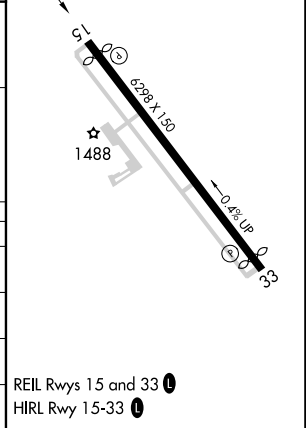
NE-2, 31 OCT 2024 to 28 NOV 2024

NE-2, 31 OCT 2024 to 28 NOV 2024



ELEV 1403	<b>D</b>	TDZE 1403
-----------	----------	-----------

CATEGORY	A	B	C	D
LPV DA	1653- $\frac{3}{4}$		250 (300- $\frac{3}{4}$ )	
LNAV/VNAV DA	1872-1 $\frac{3}{8}$		469 (500-1 $\frac{3}{8}$ )	
LNAV MDA	1980-1 577 (600-1)		1980-1 $\frac{5}{8}$ 577 (600-1 $\frac{5}{8}$ )	
CIRCLING	1980-1 577 (600-1)		2020-1 $\frac{3}{4}$ 617 (700-1 $\frac{3}{4}$ ) 2180-2 $\frac{1}{2}$ 777 (800-2 $\frac{1}{2}$ )	



REIL Rwy 15 and 33 **Ⓛ**  
HIRL Rwy 15-33 **Ⓛ**