

WAAS CH 82345 W33A	APP CRS 335°	Rwy Ldg TDZE Apt Elev	5798 1393 1403
--	------------------------	-----------------------------	---

RNAV (GPS) RWY 33

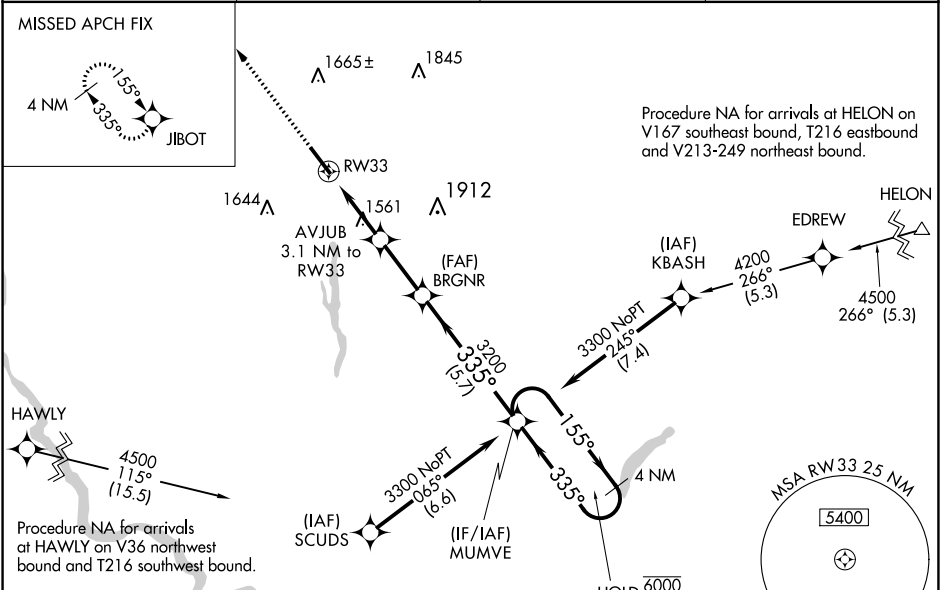
SULLIVAN COUNTY INTL (MSV)

RNP APCH - GPS.

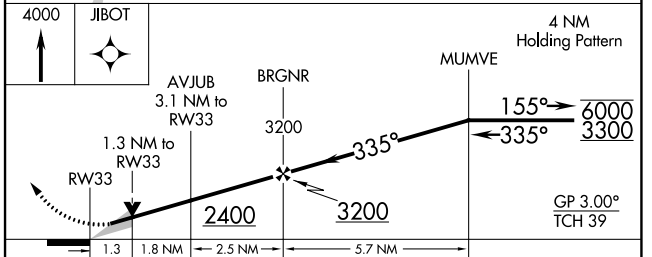
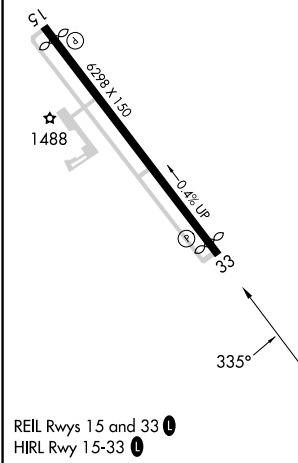
⚠ For uncompensated Baro-VNAV systems, LNAV/VNAV NA below -17°C or above 54°C. Baro-VNAV and VDP NA when using New York Stewart Intl altimeter setting. When local altimeter setting not received, use New York Stewart Intl altimeter setting: increase LPV DA to 1848 feet and all visibilities 3/8 SM; increase LNAV/VNAV DA to 1861 feet and all visibilities 3/8 SM; increase all MDAs 220 feet and LNAV visibility Cat C and D 3/8 SM, and Circling visibility Cat C 3/4 SM and Cat D 1/2 SM.

MISSED APPROACH: Climb to 4000 direct JIBOT and hold.

AWOS-3PT 124.725	NEW YORK APP CON 132.75 363.1	CLNC DEL 121.6	UNICOM 122.8 (CTAF) 0
----------------------------	---	--------------------------	---------------------------------



ELEV 1403	D	TDZE 1393
-----------	----------	-----------



CATEGORY	A	B	C	D
LPV DA		1643-1	250 (300-1)	
LNAV/VNAV DA		1656-1	263 (300-1)	
LNAV MDA	1820-1	427 (500-1)	1820-1¼	427 (500-1¼)
CIRCLING	1900-1 497 (500-1)	1920-1 517 (600-1)	2020-1¾ 617 (700-1¾)	2180-2½ 777 (800-2½)

NE-2, 31 OCT 2024 to 28 NOV 2024

NE-2, 31 OCT 2024 to 28 NOV 2024