

DESTIN, FLORIDA

AL-5680 (FAA)

24137

WAAS CH 56623 W32A	APP CRS 323°	Rwy Idg 5001 TDZE 20 Apt Elev 22
--	------------------------	---

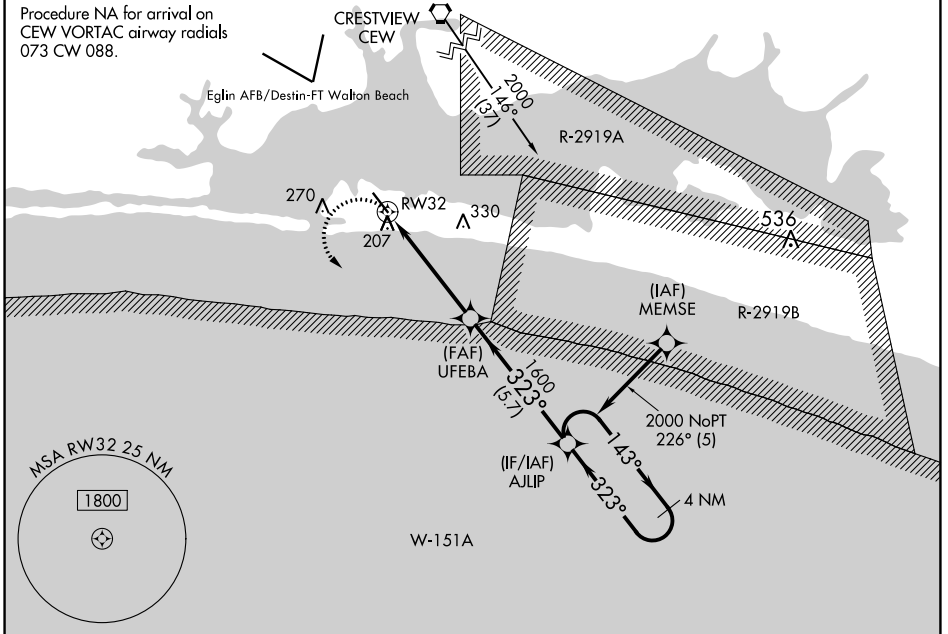
RNAV (GPS) RWY 32

DESTIN EXEC (DTS)

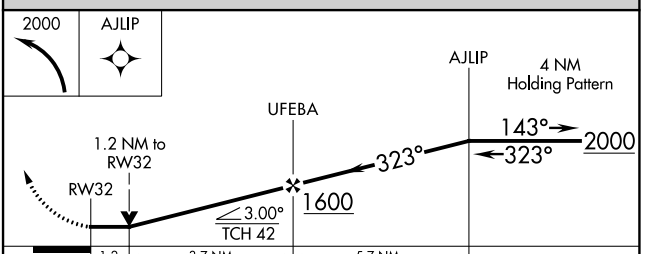
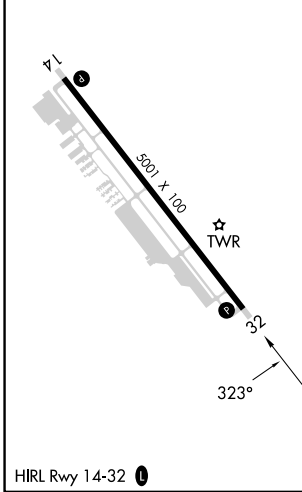
⚠ Rwy 32 helicopter visibility reduction below 3/4 SM NA. DME/DME RNP-0.3 NA. VDP NA when using Crestview altimeter setting. When local altimeter setting not received, use Crestview altimeter setting and increase all MDA 80 feet; increase LP Cats C and D visibility 1/4 SM, increase LNAV Cats C and D visibility 3/8 SM, and increase Circling Cat C visibility 1/4 SM.

MISSED APPROACH: Climbing left turn to 2000 direct AJLIP and hold.

ATIS 133.925	EGLIN APP CON 132.1 360.6	DESTIN TOWER ★ 118.45 (CTAF) 0	GND CON 121.6	CLNC DEL 121.6	CLNC DEL 127.7 377.2 (When twr closed)	UNICOM 123.075
------------------------	-------------------------------------	--	-------------------------	--------------------------	---	--------------------------



ELEV 22	TDZE 20
---------	---------



CATEGORY	A	B	C	D
LP MDA	440-1	420 (500-1)	440-1 1/8	420 (500-1 1/8)
LNAV MDA	540-1	520 (600-1)	540-1 3/8	520 (600-1 3/8)
C CIRCLING	580-1	558 (600-1)	680-1 3/4 658 (700-1 3/4)	680-2 658 (700-2)

DESTIN, FLORIDA
Amdt 1C 07DEC17

30°24'N-86°28'W

RNAV (GPS) RWY 32

DESTIN EXEC (DTS)

SE-3, 31 OCT 2024 to 28 NOV 2024

SE-3, 31 OCT 2024 to 28 NOV 2024