

APP CRS	Rwy Idg	3602
283°	TDZE	1625
	Apt Elev	1630

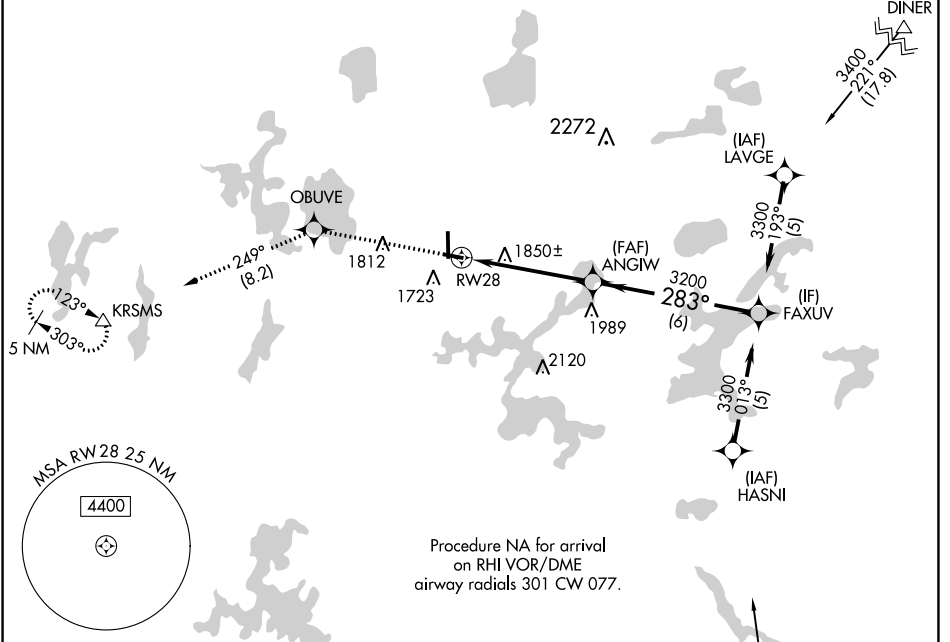
RNAV (GPS) RWY 28
LAKELAND/NOBLE F LEE MEML FLD (A.R.V)

RNP APCH.

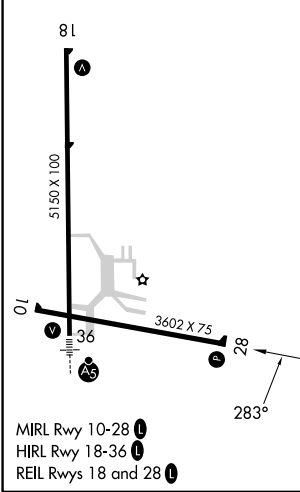
▼ Rwy 28 helicopter visibility reduction below 1 SM NA.
 ▲ Straight-in and Circling Rwy 28 NA at night, Circling Rwy 10 NA at night.

MISSED APPROACH: Climb to 6000 direct OBUVE and on track 249° to KRSMS and hold.

AWOS-3 121.125	MINNEAPOLIS CENTER 133.65 281.5	UNICOM 122.7 (CTAF)
--------------------------	---	-------------------------------



ELEV 1630	TDZE 1625
-----------	-----------



6000	OBUVE	tr 249°	KRSMS	
		ANGIW	FAXUV	
	RW28	3200	3300	
	4.8 NM	6 NM		
CATEGORY	A	B	C	D
LNAV MDA	2140-1	515 (600-1)	2140-1½ 515 (600-1¼)	2140-1¾ 515 (600-1¼)
<input checked="" type="checkbox"/> CIRCLING	2140-1 510 (600-1)	2200-1 570 (600-1)	2200-1½ 570 (600-1½)	2220-2 590 (600-2)

EC-3, 31 OCT 2024 to 28 NOV 2024

EC-3, 31 OCT 2024 to 28 NOV 2024