

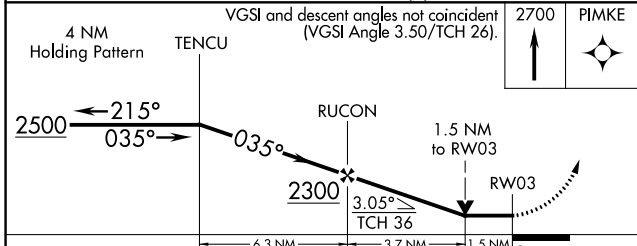
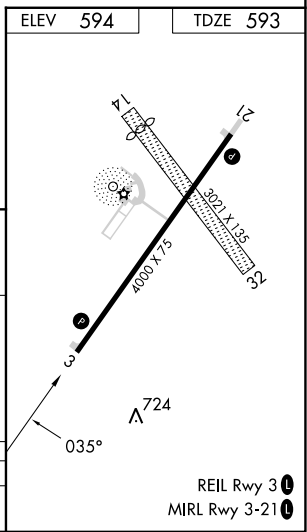
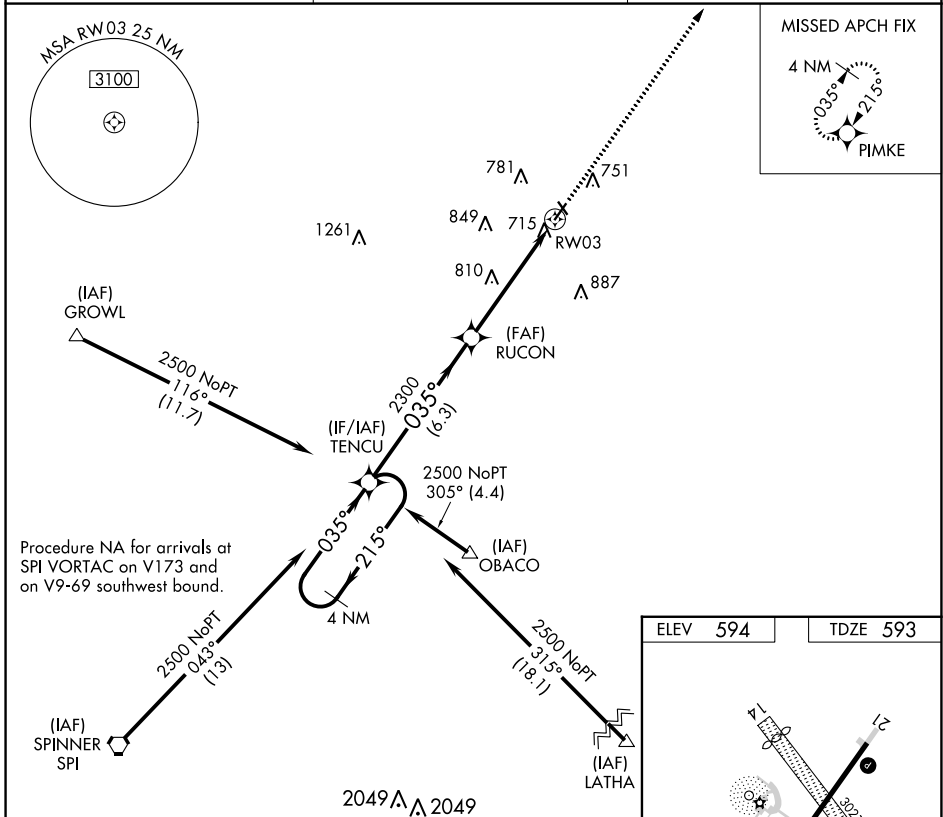
| | | |
|-------------|----------|-------------|
| APP CRS | Rwy Idg | 4000 |
| 035° | TDZE | 593 |
| | Apf Elev | 594 |

RNAV (GPS) RWY 3

LOGAN COUNTY (AAA)

| | |
|---|---|
| RNP APCH. | MISSED APPROACH: Climb to 2700 direct PIMKE and hold. |
| <p>▼ If local altimeter setting not received, use Springfield, IL altimeter setting and increase all MDAs 60 feet. VDP NA with Springfield, IL altimeter setting. Rwy 3 helicopter visibility reduction below 3/4 SM NA.</p> <p>▲</p> | |

| | | |
|--------------------------|--|---------------------------------|
| AWOS-3 118.775 | SAINT LOUIS APP CON * 126.15 323.0 | UNICOM 122.8 (CTAF) 0 |
|--------------------------|--|---------------------------------|



| CATEGORY | A | B | C | D |
|----------|--------|-------------|-------------------------|-------------------------|
| LNAV MDA | 1120-1 | 527 (600-1) | 1120-1½ 527 (600-1½) | 1120-1¾ 527 (600-1¾) |

EC-3, 31 OCT 2024 to 28 NOV 2024

EC-3, 31 OCT 2024 to 28 NOV 2024