

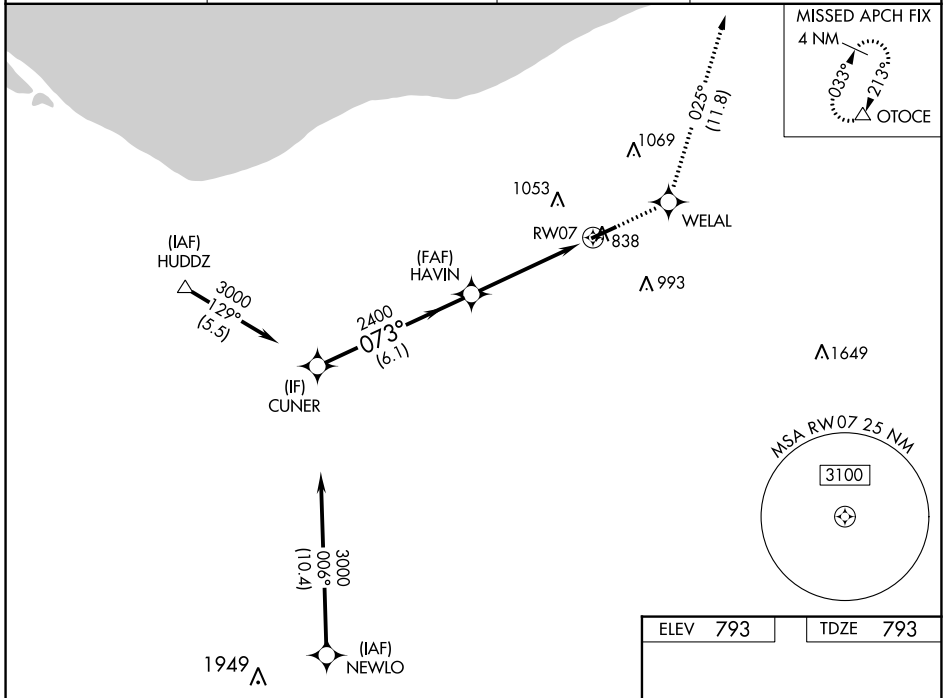
WAAS CH 99612 W07A	APP CRS 073°	Rwy Idg TDZE 793 Apt Elev 793	5002
--	------------------------	---	-------------

RNAV (GPS) RWY 7

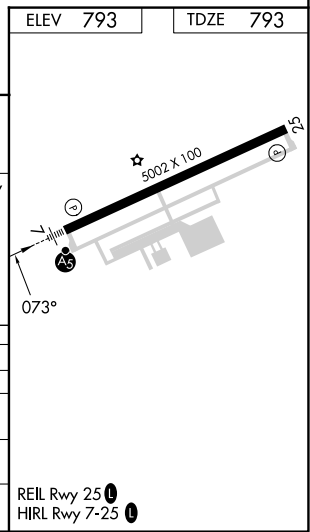
LORAIN COUNTY RGNL (L.P.R.)

RNP APCH.	MALSRL	MISSED APPROACH: Climb to 3000 direct WELAL and on track 025° to OTOCE and hold.
For uncompensated Baro-VNAV systems, LNAV/VNAV NA below -16°C (4°F) or above 54°C (130°F).		

ASOS 118.925	CLEVELAND APP CON 125.35 346.325	CLNC DEL 125.7	UNICOM 122.7 (CTAF)
------------------------	--	--------------------------	-------------------------------



CUNER	3000	HAVIN	2400	WELAL	tr 025°	OTOCE
	073°		2400			
GP 3.00° TCH 54	*1.5 NM to RWY 7		*LNAV only			
	6.1 NM	3.3 NM	1.5 NM			
CATEGORY	A	B	C	D		
LPV DA	993-½		200 (200-½)			
LNAV/VNAV DA	1133-¾		340 (400-¾)			
LNAV MDA	1340-½ 547 (600-½)		1340-1 ⅛		547 (600-1 ⅛)	
CIRCLING	1340-1	1360-1	1420-1 ¾	1420-2		
	547 (600-1)	567 (600-1)	627 (700-¾)	627 (700-2)		



EC-2, 31 OCT 2024 to 28 NOV 2024

EC-2, 31 OCT 2024 to 28 NOV 2024