

WAAS CH 50137 W25A	APP CRS 254°	Rwy Idg TDZE Apt Elev	6197 394 397
--	------------------------	-----------------------------	---

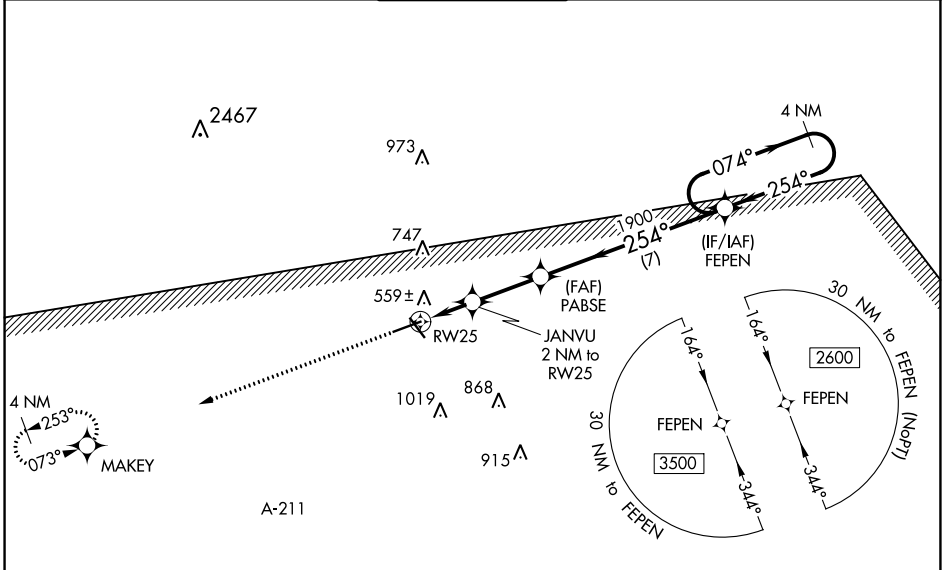
RNAV (GPS) RWY 25

TROY MUNI AT N KENNETH CAMPBELL FLD (TOI)

RNP APCH. MISSED APPROACH: Climb to 2200 direct MAKEY and hold.

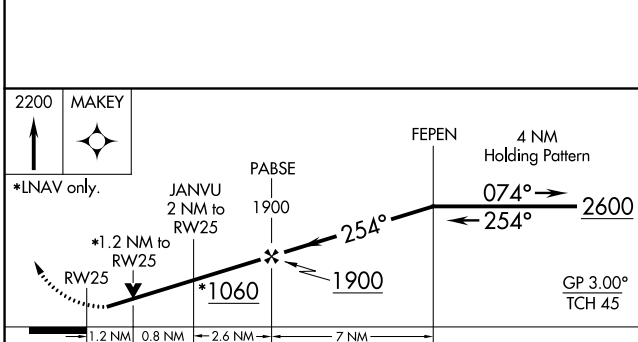
▼ ▲ For uncompensated Baro-VNAV systems, LNAV/VNAV NA below -7°C (20°F) or above 54°C (130°F). Baro-VNAV and VDP NA when using Montgomery Rgnl (Dannelly Fld) altimeter setting. Rwy 25 helicopter visibility reduction below ¼ SM NA. Circling to Rwy 14, 32 NA at night. When local altimeter setting not received, use Montgomery Rgnl (Dannelly Fld) altimeter setting and increase LPV DA to 747 and all visibilities ¼ SM, LNAV/VNAV DA to 840 and visibilities ⅓ SM, and all MDA 100 feet; increase LNAV Cats C and D and Circling Cat C visibility ¼ SM.

ATIS 120.925	CAIRNS APP CON ★ 121.1 319.25	TROY TOWER ★ 124.3 (CTAF) 0 306.9	GND CON 121.9 294.7	UNICOM 122.8
------------------------	---	---	-------------------------------	------------------------



SE-4, 31 OCT 2024 to 28 NOV 2024

SE-4, 31 OCT 2024 to 28 NOV 2024



ELEV 397	TDZE 394
----------	----------

2200	MAKEY
*LNAV only.	
JANVU 2 NM to RW25	PABSE 1900
*1.2 NM to RW25	*1060
1.2 NM	0.8 NM
2.6 NM	7 NM
FEPEN	4 NM Holding Pattern
254°	074°
254°	2600
GP 3.00°	TCH 45

