

VORTAC RZS 114.9 Chan 96	APP CRS 097°	Rwy Idg TDZE 674 Apt Elev 674	2803
--	------------------------	---	-------------

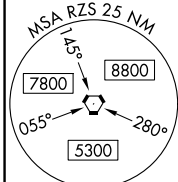
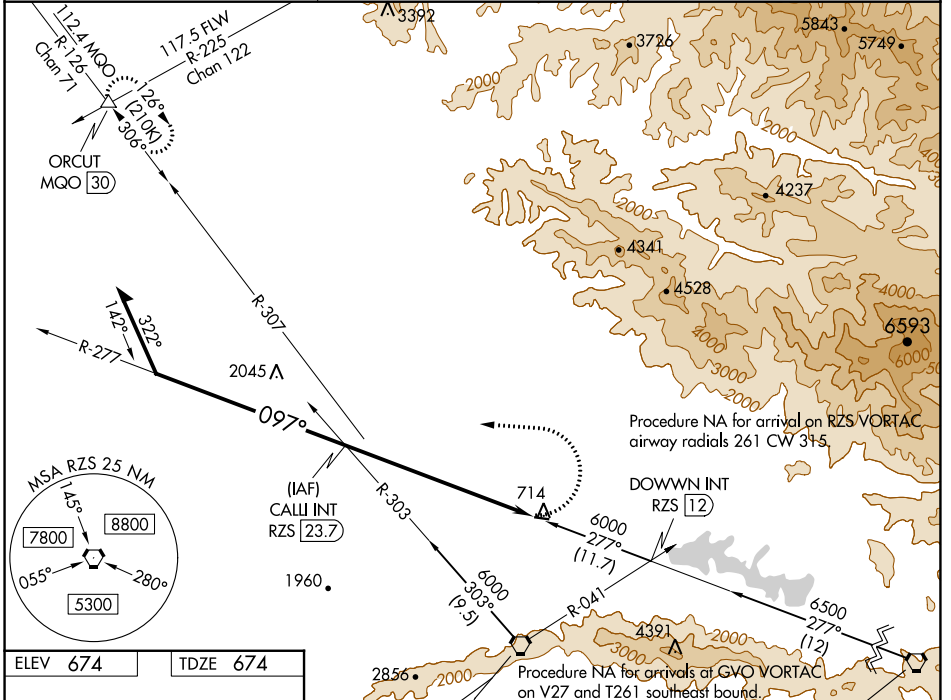
VOR RWY 8

SANTA YNEZ/KUNKLE FLD (IZA)

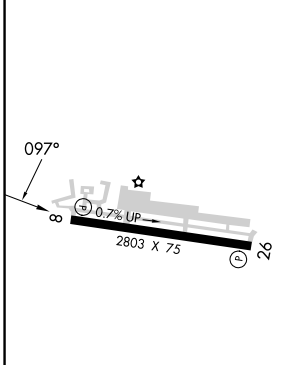
⚠ Straight-in Rwy 8 NA at night. Circling Rwy 8 NA at night.
⚠ Rwy 8 helicopter visibility reduction below 1 SM NA.

MISSED APPROACH: Climbing left turn to 6000 on heading 285° and on GVO VORTAC R-307 and MQO VORTAC R-126 to ORCUT INT and hold.

AWOS-3PT 118.075	SANTA BARBARA APP CON* 124.15 327.8	UNICOM 122.8 (CTAF) 0
----------------------------	---	---------------------------------



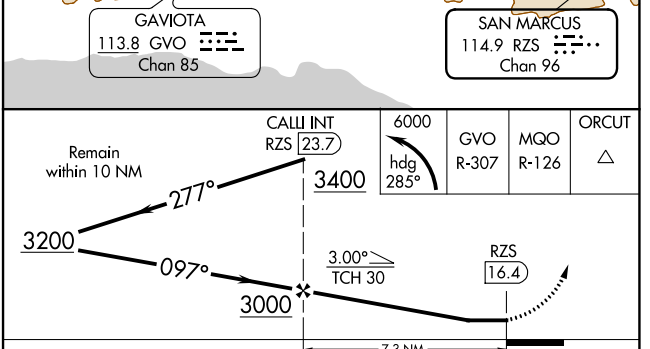
ELEV 674	TDZE 674
----------	----------



REIL Rws 8 and 26
MIRL Rwy 8-26

FAF to MAP 7.3 NM

Knots	60	90	120	150	180
Min:Sec	7:18	4:52	3:39	2:55	2:26



CATEGORY	A	B	C	D
S-8	2040-1¼ 1366 (1400-1¼)	2040-1½ 1366 (1400-1½)		NA
<input checked="" type="checkbox"/> CIRCLING	2040-1¼ 1366 (1400-1¼)	2040-1½ 1366 (1400-1½)		NA

SW-3, 31 OCT 2024 to 28 NOV 2024

SW-3, 31 OCT 2024 to 28 NOV 2024