

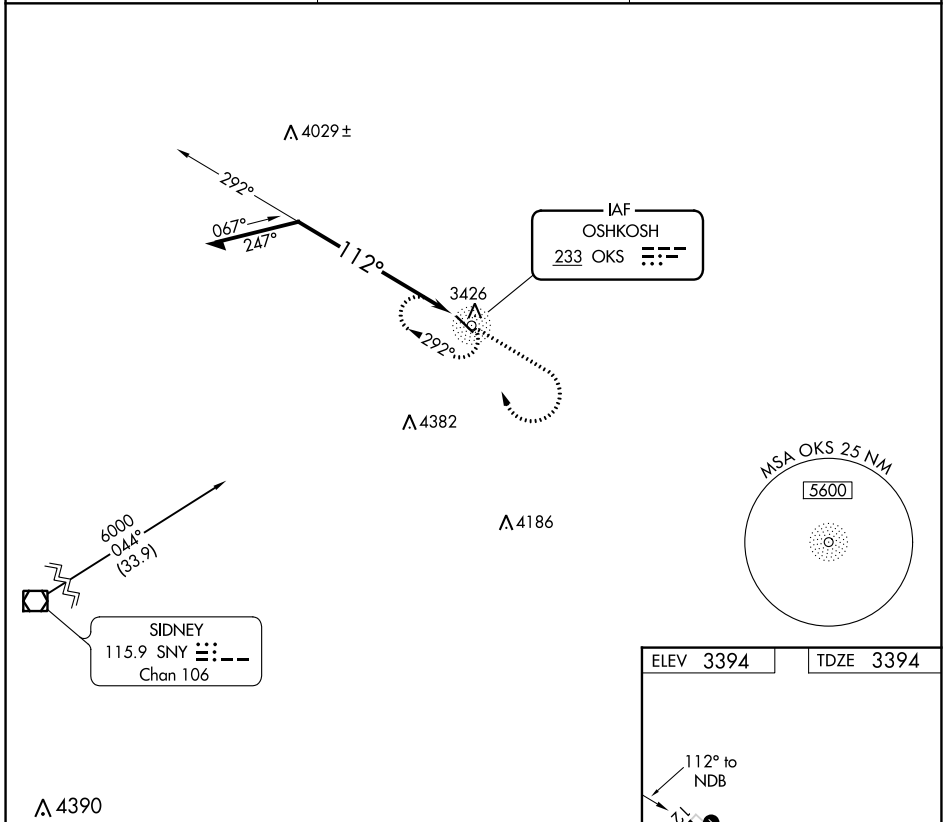
NDB OKS 233	APP CRS 112°	Rwy Idg TDZE Apt Elev	4699 3394 3394
-----------------------	------------------------	-----------------------------	---

NDB RWY 12

GARDEN COUNTY/KING RHILEY FLD (OKS)

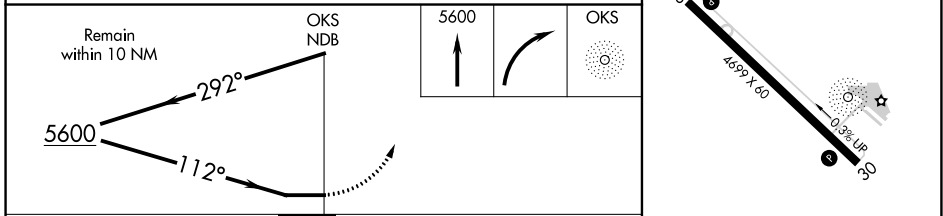
NA	Use Ogallala altimeter setting.	MISSED APPROACH: Climb to 5600 then right turn direct OKS NDB and hold.
-----------	---------------------------------	---

OGA AWOS-3 121.275	DENVER CENTER 118.475 225.4	UNICOM 122.8 (CTAF) 0
------------------------------	---------------------------------------	---------------------------------



NC-2, 31 OCT 2024 to 28 NOV 2024

NC-2, 31 OCT 2024 to 28 NOV 2024



CATEGORY	A	B	C	D
S-12	4600-1¼ 1206 (1300-1¼)	4600-1½ 1206 (1300-1½)		NA
CIRCLING	4600-1¼ 1206 (1300-1¼)	4600-1½ 1206 (1300-1½)		NA

ELEV 3394	TDZE 3394
-----------	-----------

REIL Rwy 12 and 30 **0**
MIRL Rwy 12-30 **0**

NDB RWY 12