

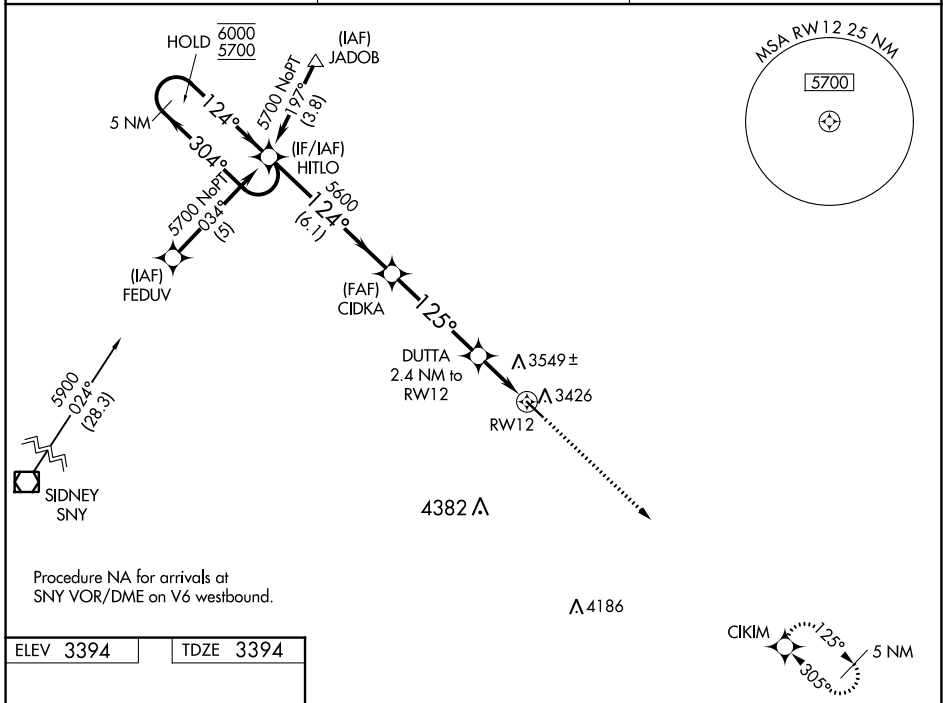
WAAS CH 99708 W12A	APP CRS 125°	Rwy ldg 4699 TDZE 3394 Apt Elev 3394
--	------------------------	---

RNAV (GPS) RWY 12

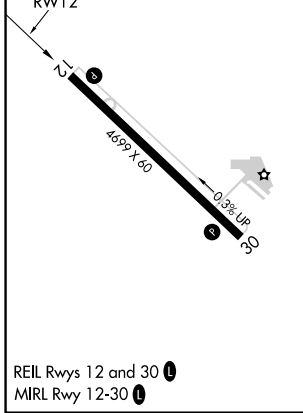
GARDEN COUNTY/KING RHILEY FLD (OKS)

RNP APCH.	Baro-VNAV NA. Rwy 12 helicopter visibility reduction below 3/4 SM NA. Use Ogallala altimeter setting.	MISSED APPROACH: Climb to 5400 direct CIKIM and hold.
-----------	---	---

OGA AWOS-3 121.275	DENVER CENTER 118.475 225.4	UNICOM 122.8 (CTAF) 0
------------------------------	---------------------------------------	---------------------------------



ELEV 3394	TDZE 3394
-----------	-----------



	5 NM Holding Pattern	HITLO	CIDKA	DUTTA 2.4 NM to RW12	RW12	5400	CIKIM	
	6000 ← 304°	5700	124° →	124°	5600	125°	*4200	*LNAV only
	GP 3.00°	TCH 40		6.1 NM	4.3 NM	2.4 NM		
CATEGORY	A	B	C	D				
LPV DA	3762-1¼	368 (400-1¼)					NA	
LNAV/VNAV DA	3882-1¾	488 (500-1¾)					NA	
LNAV MDA	3980-1	586 (600-1)					NA	
CIRCLING	3980-1	4180-1	586 (600-1)	786 (800-1)			NA	

OSHKOSH, NEBRASKA
Amdt 2C 02DEC21

GARDEN COUNTY/KING RHILEY FLD (OKS)
41°24'N-102°21'W
RNAV (GPS) RWY 12

NC-2, 31 OCT 2024 to 28 NOV 2024

NC-2, 31 OCT 2024 to 28 NOV 2024