


|  |                        |                             |   |
|--|------------------------|-----------------------------|---|
| WAAS<br>CH <b>61016</b><br><b>W23A</b> | APP CRS<br><b>229°</b> | Rwy Idg<br>TDZE<br>Apt Elev | <b>6002</b><br><b>101</b><br><b>101</b> |
|--|------------------------|-----------------------------|---|

# RNAV (GPS) RWY 23

LOWCOUNTRY RGNL (R.BW)

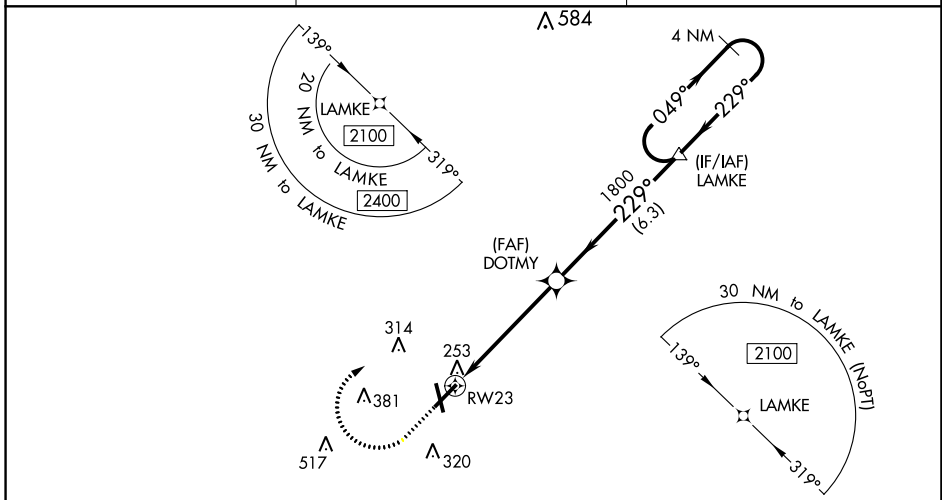
**⚠** For uncompensated Baro-VNAV systems, LNAV/VNAV NA below -15°C (5°F) or above 54°C (130°F). Baro-VNAV and VDP NA when using Charleston AFB/Intl altimeter setting. DME/DME RNP-0.3 NA. Helicopter visibility reduction below 3/4 SM NA. For inop ODALS, increase LNAV/VNAV all Cats visibility to 1 1/4 mile and LNAV Cat D visibility to 1 1/2 mile. When local altimeter setting not received, use Charleston AFB/Intl altimeter setting; increase LPV DA to 379 feet and LNAV/VNAV DA to 542 feet and all MDA 80 feet; increase LNAV/VNAV visibility all Cats, LNAV Cats C/D visibility, and Circling Cat D visibility 1/4 mile; increase Circling Cat C visibility 1/2 mile. For inop ODALS when using Charleston AFB/Intl altimeter setting, increase LPV all Cats visibility to 7/8 mile and LNAV/VNAV all Cats and LNAV Cats C/D visibility to 1 1/2 mile.

**ODALS**

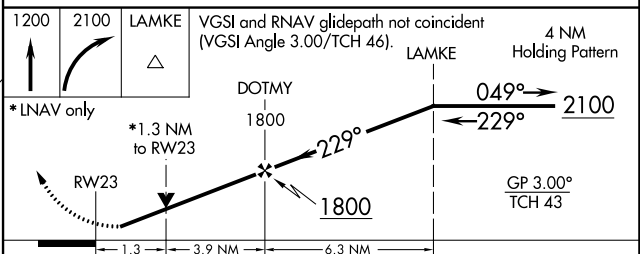
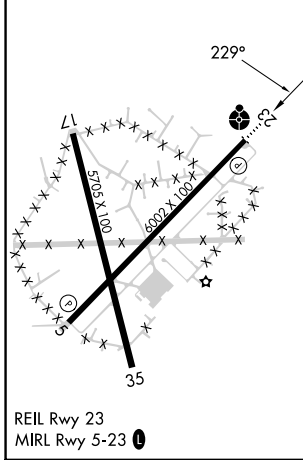



**MISSED APPROACH:** Climb to 1200 then climbing right turn to 2100 direct LAMKE and hold.

|                            |  |   |
|----------------------------|--|---|
| AWOS-3PT<br><b>118.725</b> | CHARLESTON APP CON<br><b>120.7 306.925</b> | UNICOM<br><b>122.8 (CTAF)</b>  |
|----------------------------|--|---|



|      |     |      |     |
|------|-----|------|-----|
| ELEV | 101 | TDZE | 101 |
|------|-----|------|-----|



| CATEGORY   | A                    | B                    | C                            | D                    |
|--|----------------------|----------------------|------------------------------|----------------------|
| LPV DA   |                      | 301-3/4              | 200 (200-3/4)                |                      |
| LNAV/VNAV DA   |                      | 464-1 1/8            | 363 (400-1 1/8)              |                      |
| LNAV MDA   | 560-3/4              | 459 (500-3/4)        | 560-1 1/8                    | 459 (500-1 1/8)      |
|  CIRCLING | 620-1<br>519 (600-1) | 640-1<br>539 (600-1) | 700-1 1/2<br>599 (600-1 1/2) | 700-2<br>599 (600-2) |

SE-2, 31 OCT 2024 to 28 NOV 2024

SE-2, 31 OCT 2024 to 28 NOV 2024