

FORT DRUM, NEW YORK

# HI-ILS or LOC RWY 3

WHEELER-SACK AAF (KGTB)

LOC/DME I-AEZ <b>108.5</b> Chan <b>22</b>	APCH CRS <b>029°</b>	Rwy Ildg TDZE <b>685</b> Arpt Elev <b>690</b>
---	-------------------------	---

[USA]

DME or RADAR required

- \* When ALS inop, increase vis to ¾ mile.
- \*\* When ALS inop, increase CAT C vis to 2½ miles, CAT D vis to 2¾ miles, CAT E vis to 3 miles.

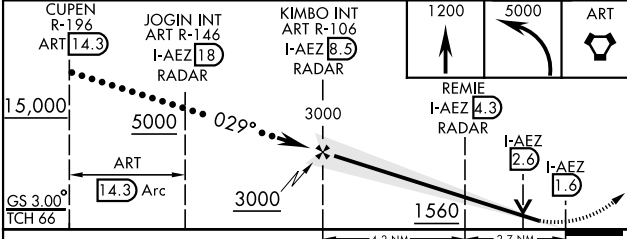
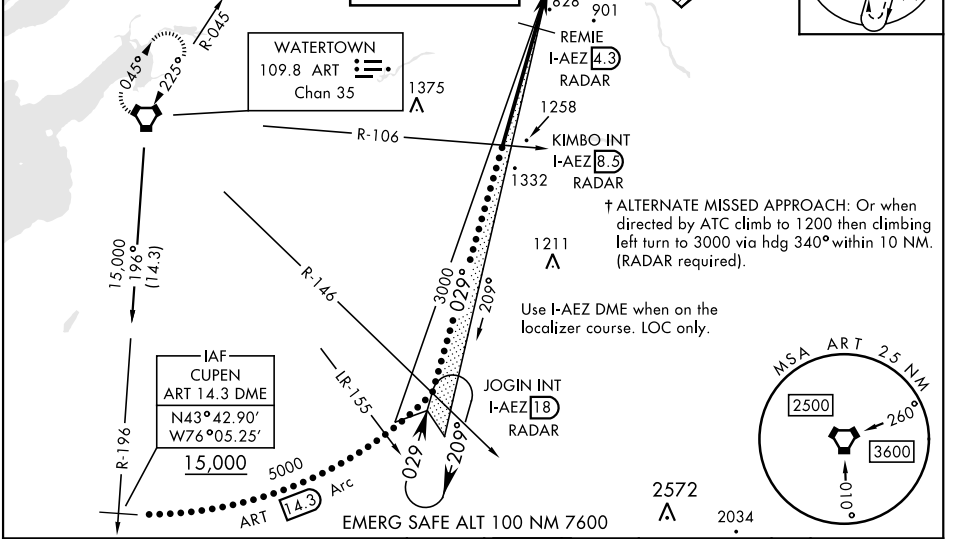
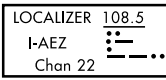


† MISSED APPROACH: Climb to 1200, then climbing left turn to 5000 direct ART VORTAC and hold, continue climb in hold to 5000.

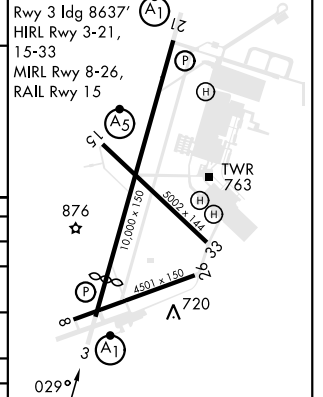
ATIS <b>119.525</b>	APP CON <b>124.875 307.125</b>	TOWER <b>118.75 290.25</b>	GND CON <b>123.65 229.8</b>	CLNC DEL <b>121.9</b>	ASR/PAR
------------------------	-----------------------------------	-------------------------------	--------------------------------	--------------------------	---------

\*\*\* When ALS inop, increase CAT C vis to 1½ mile, CAT D vis to 1¼ miles, CAT E vis to 1½ miles.

\*\*\*\* Circling NA E of Rwy 21 and 33. Circling NA for CAT CD to Rwy 8. Circling NA for CAT E to Rwy 8-26 and 15-33.



ELEV <b>690</b>	TDZE <b>685</b>
-----------------	-----------------



CATEGORY	C	D	E
S-ILS 3*	957-½ 272 (300-½)		
S-LOC 3**	1560-2 875 (900-2)	1560-2¼ 875 (900-2¼)	1560-2½ 875 (900-2½)
CIRCLING ****	1560-2½ 870 (900-2½)	1560-2¾ 870 (900-2¾)	1640-3 950 (1000-3)
DME MINIMUMS			
S-LOC 3 ***	1080-¾ 395 (400-¾)	1080-1 395 (400-1)	
CIRCLING ****	1220-1½ 530 (600-1½)	1380-2¼ 690 (700-2¼)	1640-3 950 (1000-3)

FAF to MAP 6.9 NM					
Knots	120	140	160	180	200
Min:Sec	3:27	2:57	2:35	2:18	2:04

FORT DRUM, NEW YORK  
Amdt 2 20APR23

44°03'N-75°43'W

WHEELER-SACK AAF (KGTB)

# HI-ILS or LOC RWY 3

NE-2, 31 OCT 2024 to 28 NOV 2024

NE-2, 31 OCT 2024 to 28 NOV 2024