

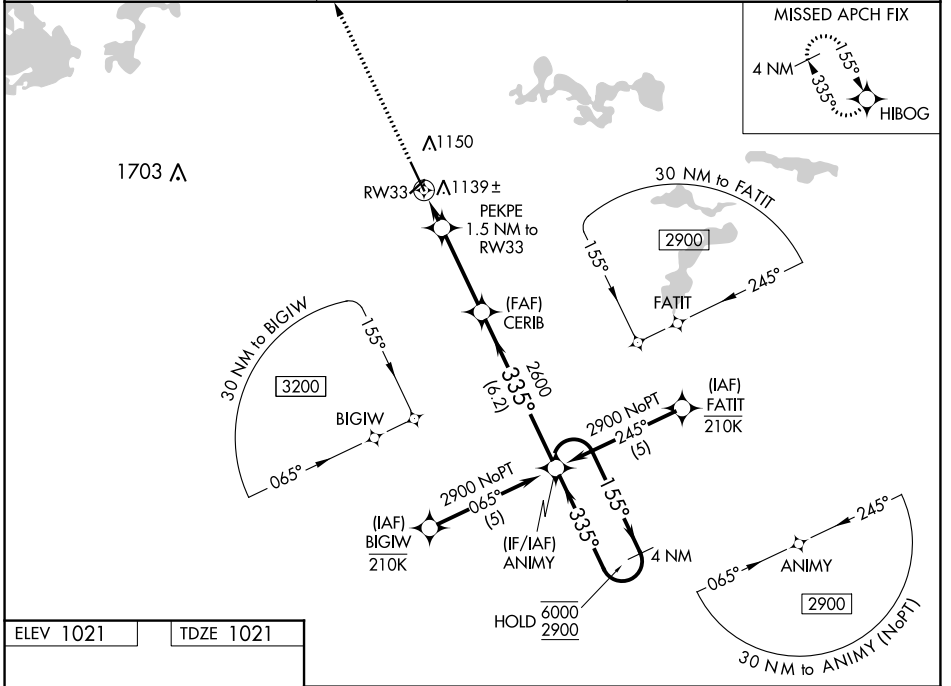
WAAS CH <b>86315</b> <b>W33A</b>	APP CRS <b>335°</b>	Rwy ldg <b>6600</b> TDZE <b>1021</b> Apt Elev <b>1021</b>
--	------------------------	---

# RNAV (GPS) RWY 33

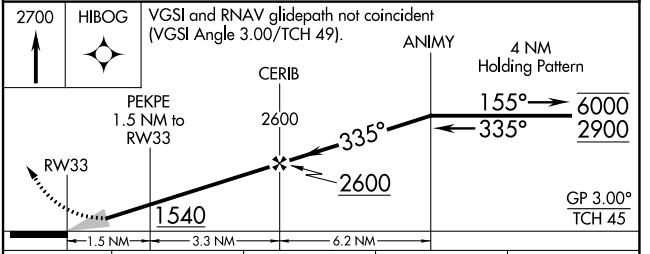
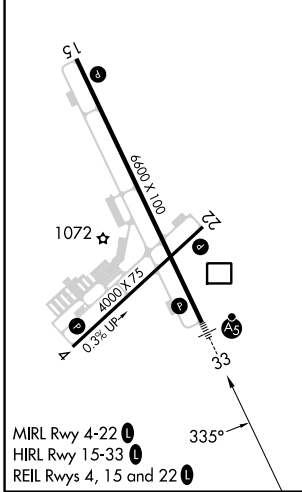
MANKATO RGNL (MKT)

RNP APCH - GPS.	MALSR 	MISSED APPROACH: Climb to 2700 direct HIBOG and hold.
<p><b>⚠</b> For uncompensated Baro-VNAV systems, LNAV/VNAV NA below -17°C or above 54°C. For inop ALS, increase LNAV/VNAV all Cats visibility to ¾ SM and LNAV Cats C and D visibility to 1 SM.</p>		

AWOS-3PT <b>118.175</b>	MINNEAPOLIS CENTER <b>135.0 306.9</b>	UNICOM <b>122.725</b> (CTAF) <b>📻</b>
----------------------------	--	--



ELEV 1021	TDZE 1021
-----------	-----------



CATEGORY	A	B	C	D
LPV DA		1221-½	200 (200-½)	
LNAV/VNAV DA		1320-½	299 (300-½)	
LNAV MDA	1400-½	379 (400-½)	1400-⅝	379 (400-⅝)
CIRCLING	1460-1 439 (500-1)	1480-1 459 (500-1)	1600-1½ 579 (600-1½)	1600-2 579 (600-2)

NC-1, 31 OCT 2024 to 28 NOV 2024

NC-1, 31 OCT 2024 to 28 NOV 2024