

| | | | |
|--|------------------------|-----------------------------|---|
| WAAS CH 49144 W14A | APP CRS 140° | Rwy Idg TDZE Apt Elev | 6000 181 187 |
|--|------------------------|-----------------------------|---|

RNAV (GPS) RWY 14

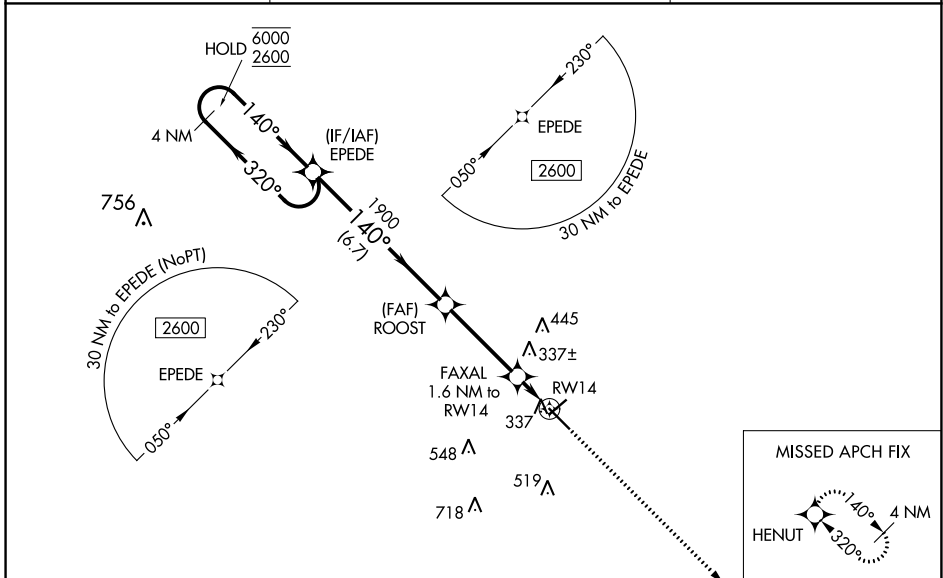
STATESBORO-BULLOCH COUNTY (TBR)

RNP APCH-GPS.

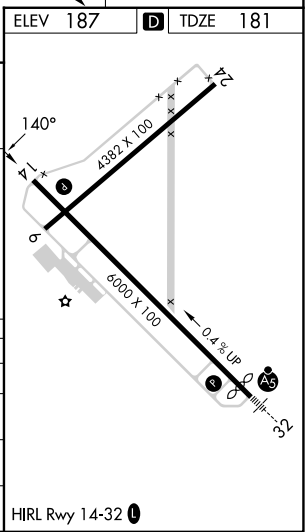
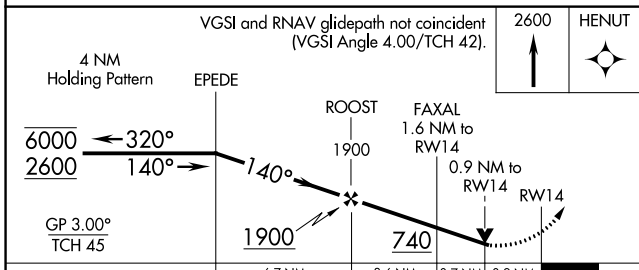
⚠ Circling to Rwy 6/24 NA at night. Baro-VNAV and VDP NA when using Sylvania altimeter setting.
Rwy 14 helicopter visibility reduction below $\frac{3}{4}$ SM NA. For uncompensated Baro-VNAV systems, LNAV/VNAV NA below -15°C or above 54°C. When local altimeter setting not received, use Sylvania altimeter setting and increase LPV DA to 525 feet and all visibilities $\frac{1}{8}$ SM. Increase LNAV/VNAV DA to 547 feet; increase all MDAs 40 feet and LNAV visibility Cat C/D $\frac{1}{4}$ SM, and Circling visibility Cat C $\frac{1}{4}$ SM.

MISSED APPROACH: Climb to 2600 direct HENUT and hold.

| | | |
|--------------------------|---|---------------------------------|
| AWOS-3 119.025 | SAVANNAH APP CON* 118.4 354.0 | UNICOM 122.725 (CTAF) |
|--------------------------|---|---------------------------------|



| | |
|----------|------------|
| ELEV 187 | D TDZE 181 |
|----------|------------|



| CATEGORY | A | B | C | D |
|--------------|----------------------|----------------------|---|---|
| LPV DA | | 496- $\frac{7}{8}$ | 315 (400- $\frac{7}{8}$) | |
| LNAV/VNAV DA | | 518-1 | 337 (400-1) | |
| LNAV MDA | 600-1 | 419 (500-1) | 600- $1\frac{1}{8}$ | 419 (500- $1\frac{1}{8}$) |
| CIRCLING | 640-1 453 (500-1) | 740-1 553 (600-1) | 840- $1\frac{3}{4}$ 653 (700- $1\frac{3}{4}$) | 860- $2\frac{1}{4}$ 673 (700- $2\frac{1}{4}$) |

SE-4, 31 OCT 2024 to 28 NOV 2024

SE-4, 31 OCT 2024 to 28 NOV 2024