

APP CRS <b>067°</b>	Rwy Idg <b>2900</b>
	TDZE <b>558</b>
	Apt Elev <b>560</b>

# RNAV (GPS) RWY 7

SKY MANOR (N40)

RNP APCH

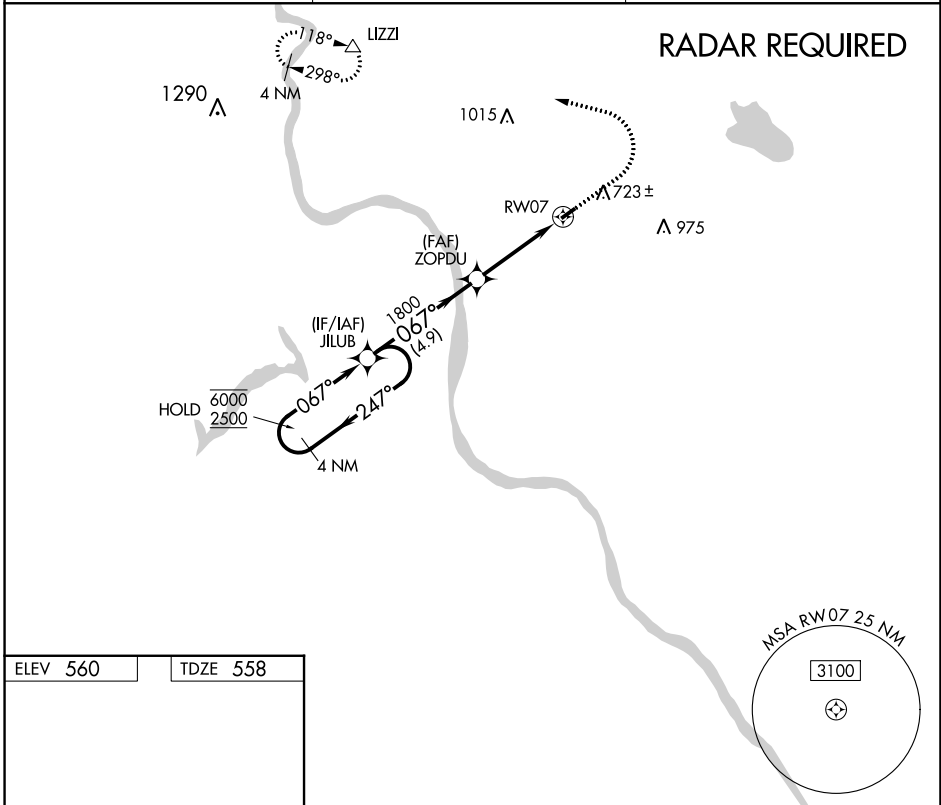
Procedure NA at night. When local altimeter setting not received, use Lehigh Valley Intl altimeter setting. Rwy 7 helicopter visibility reduction below 1 SM NA.

MISSED APPROACH: Climb to 1100 then climbing left turn to 3000 direct LIZZI and hold.

AWOS-3  
**121.725**

ALLENTOWN APP CON  
**119.65 124.45 351.8**

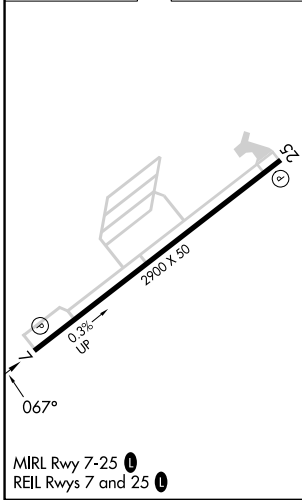
UNICOM  
**122.975 (CTAF) 0**



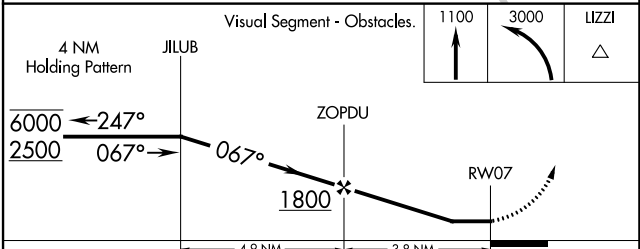
NE-2, 31 OCT 2024 to 28 NOV 2024

NE-2, 31 OCT 2024 to 28 NOV 2024

ELEV 560	TDZE 558
----------	----------



MIRL Rwy 7-25 0  
REIL Rwy 7 and 25 0



CATEGORY	A	B	C	D
LNAV MDA	1080-1 522 (600-1)		NA	
<input checked="" type="checkbox"/> CIRCLING	1140-1 580 (600-1)		NA	