

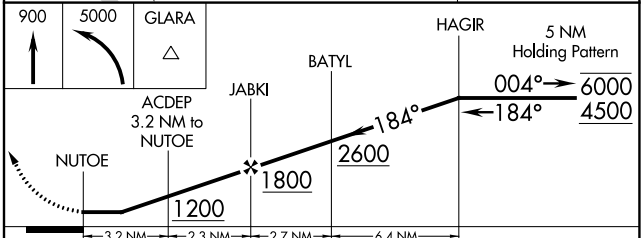
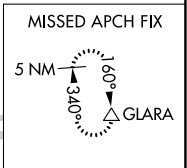
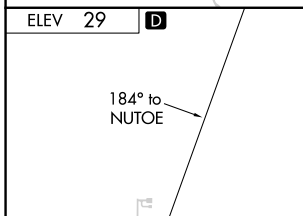
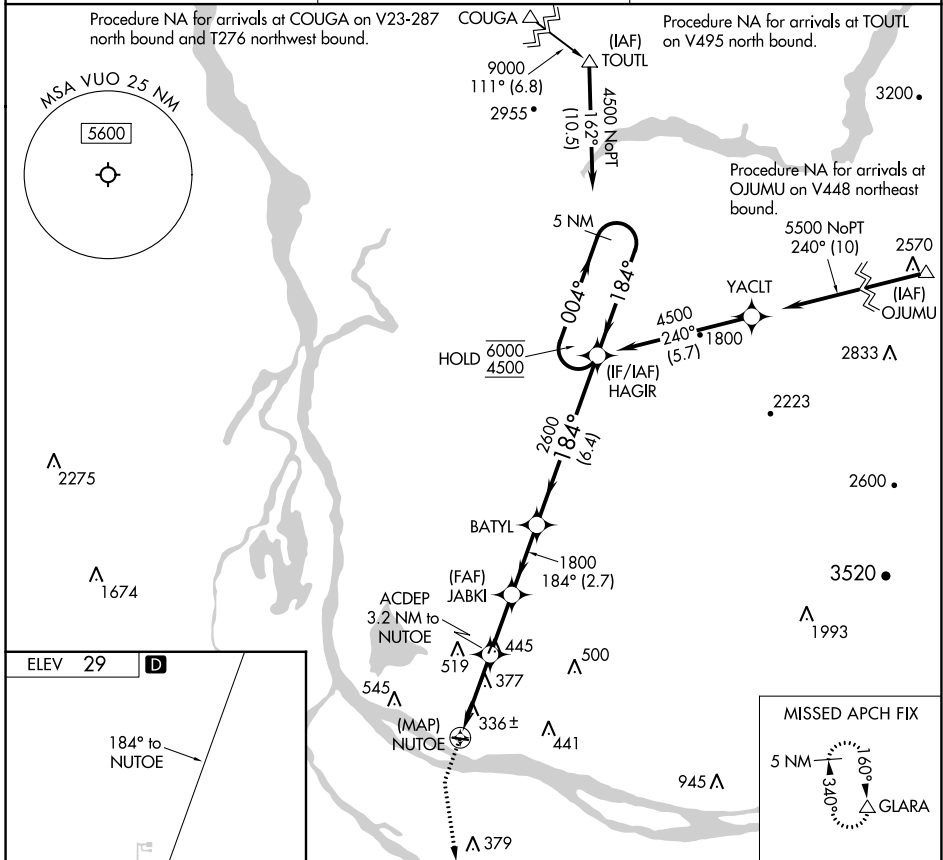
APP CRS	Rwy Idg	N/A
184°	TDZE	N/A
	Apt Elev	29

RNAV (GPS)-B

PEARSON FLD (VUO)

RNP APCH - GPS.	MISSED APPROACH: Climb to 900 then climbing left turn to 5000 direct GLARA and hold, continue climb-in-hold to 5000.
<p>▼ When local altimeter setting not received, use Portland Intl altimeter setting.</p> <p>▲</p>	

ASOS 135.125	PORTLAND APP CON 124.35 360.8	CLNC DEL 119.0 (CTAF) 0
------------------------	---	-----------------------------------



REIL Rwy 26	MIRL Rwy 8-26 0	PEARSON FLD (VUO)		
CATEGORY	A	B	C	D
C CIRCLING	720-1 691 (700-1)	740-1 711 (800-1)	NA	

NW-1, 31 OCT 2024 to 28 NOV 2024

NW-1, 31 OCT 2024 to 28 NOV 2024