

(INDIE8.INDIE) 21336

AL-5824 (FAA)

BAY CITY RGNL (BYY)

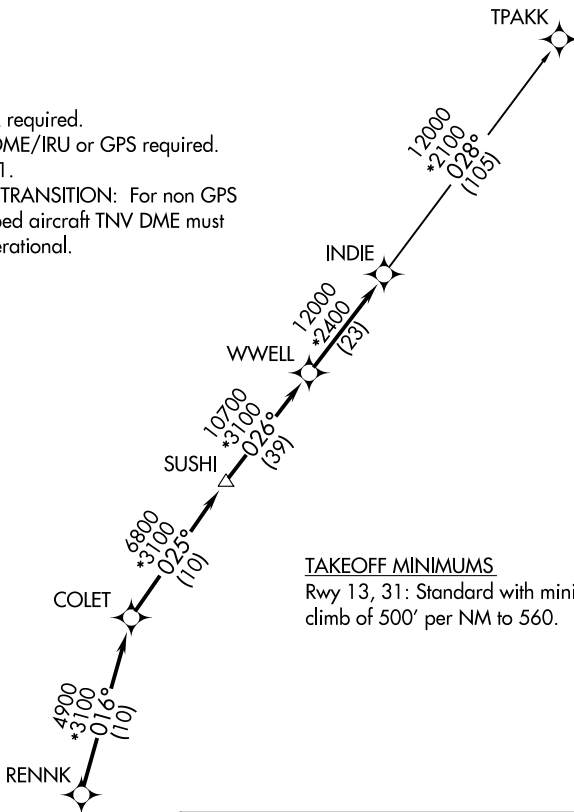
INDIE EIGHT DEPARTURE (RNAV)

BAY CITY, TEXAS

AWOS-3
118.075
CTAF
122.8
HOUSTON CENTER
128.6 360.8

**TOP ALTITUDE:
ASSIGNED BY ATC**

- NOTE: RADAR required.
- NOTE: DME/DME/IRU or GPS required.
- NOTE: RNAV 1.
- NOTE: TPAKK TRANSITION: For non GPS equipped aircraft TNV DME must be operational.



TAKEOFF MINIMUMS

Rwy 13, 31: Standard with minimum climb of 500' per NM to 560.

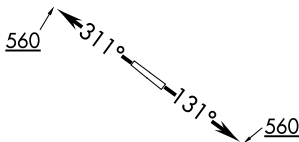
DEPARTURE ROUTE DESCRIPTION

TAKEOFF RUNWAY 13: Climb on heading 131° to 560 for RADAR vectors to RENNK, thence

TAKEOFF RUNWAY 31: Climb on heading 311° to 560 for RADAR vectors to RENNK, thence

. . . . on track 016° to COLET, then on track 025° to SUSHI, then on track 026° to WWELL, then on track 026° to INDIE, then on (transition). Maintain ATC assigned altitude. Expect filed altitude 10 minutes after departure.

TPAKK TRANSITION (INDIE8.TPAKK)



NOTE: Chart not to scale.

SC-5, 31 OCT 2024 to 28 NOV 2024

SC-5, 31 OCT 2024 to 28 NOV 2024

INDIE EIGHT DEPARTURE (RNAV)

(INDIE8.INDIE) 07OCT21

BAY CITY, TEXAS

BAY CITY RGNL (BYY)