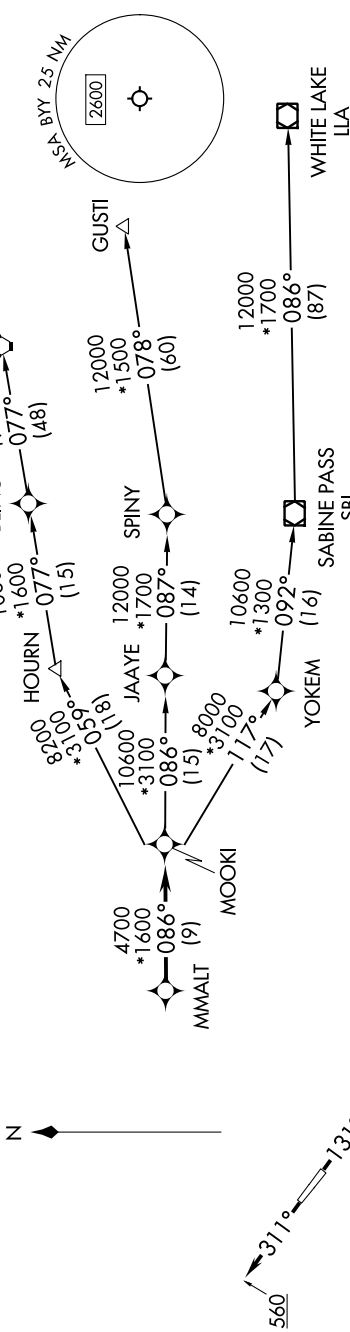


MMALT SEVEN DEPARTURE (RNAV)

SC-5, 31 OCT 2024 to 28 NOV 2024

RNAV 1 - DME/DME/IRU or GPS.
RADAR required.

HOUSTON DEP CON
128.6 360.85



**TOP ALTITUDE:
ASSIGNED BY ATC**

NOTE: GUSTI and LCH Transitions ATC assigned only for aircraft departing AXH, EFD, GLS, HPY, IWS, LBX, LVJ, SGR, TME, T00, T41 and 54T.

DEPARTURE ROUTE DESCRIPTION

TAKEOFF RUNWAY 13: Climb on heading 131° to 560, for RADAR vectors to MMALT, thence. . . .

TAKEOFF RUNWAY 31: Climb on heading 311° to 560, for RADAR vectors to MMALT, thence. . . .

. . . on track 086° to MOOKI, then on (transition). Maintain ATC assigned altitude.
Expect filed altitude 10 minutes after departure.

GUSTI TRANSITION (MMALT7.GUSTI)
LAKE CHARLES TRANSITION (MMALT7.LCH)
WHITE LAKE TRANSITION (MMALT7.LLA)

TAKEOFF MINIMUMS
Rwys 13, 31: Standard with minimum climb of 500' /NM to 560.

NOTE: Chart not to scale.

SC-5, 31 OCT 2024 to 28 NOV 2024